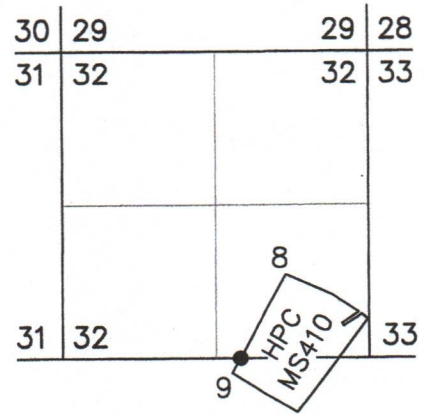


# RECORD OF LAND CORNER MONUMENTATION

INTERSECTION OF NORTHWESTERLY LINE OF HYDRAULIC PLACER CLAIM, MS 410,  
WITH SOUTH LINE SECTION 32, T. 8 S., R. 37 E., W.M.



**ORIGINALLY ESTABLISHED BY:** William L. Hanley, PLS #1639

**COUNTY SURVEYOR FILING INFORMATION:**

Map of Survey filed March 6, 1986 as Survey No. 9-37-85 and associated  
Corner Monumentation Record filed March 14, 1986 as Survey No. 9-37-134

**ORIGINAL DESCRIPTION:** Set a 2 1/2" aluminum cap on 2" aluminum pipe 30 ins long 25 ins in ground with 5 ins proj. out of ground with surrounding rock mound and 6 ft steel fence post alongside with sign 54-9 attached.

Aluminum cap marked as shown in corner diagram.

New bearing trees established:

A pine 11 ins dia bears S61°W 17.8 ft dist.

A fir 6 ins dia bears N24°W 12.0 ft dist, both trees marked 8 9 HPC 410/S 32 BT.

**EVIDENCE FOUND:** Found Hanley's aluminum monument out of the ground and laying approximately 25 feet down hill, and the mound of stone was scattered. It appears the disturbance was caused by heavy equipment during past logging operations.

From which,

- ▶ A dead and down lodgepole pine, 12" diameter, bears S.61°W., 18 ft.±, with visible scribing in a partially healed blaze.
- ▶ A white fir, 18" dbh, bears N.24°W., 12 ft., with fully healed single blaze.

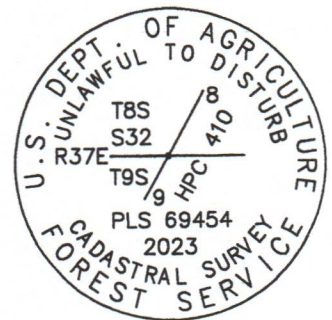
**DESCRIPTION OF MONUMENTS AND ACCESSORIES SET AND METHODS USED:**

I reestablished the corner at the intersection between found accepted monuments at Corner No.'s 8 and 9 of the Hydraulic Placer Claim, Mineral Survey No. 410, and between the nearest found monuments east and west controlling the south line of Section 32. At the corner point, I set a standard USFS 2 1/2" x 30" aluminum pipe with attached 3 1/4" aluminum cap, 28" in the ground. Raised a 2 ft. diameter mound of stone around the monument to top of cap. Cap is marked as shown below.

CORNER MONUMENT  
MARKED:

From which, **I SET A NEW REFERENCE POINT:**

- ▶ A 5/8"x 24" iron pin, bears S.16°13'W., 15.66 ft., with attached 2" aluminum cap marked *RP 1 2023 PLS 69454*



Placed a plastic-encased magnet beneath the base of the aluminum pipe. I broke Hanley's aluminum pipe in half, and buried the pieces vertically, inverted, South and alongside the new monument. Painted a 6 inch red band around the bearing tree, painted the blazes red, and attached USFS 54-3 and 54-9 signs. Used a magnetic compass with 14° East declination to measure bearings to BT's. Used a total station to measure bearing and distance to the reference point. Set an aluminum guard post S.29°W., with USFS 54-2 sign attached, and another West, with USFS 54-2 and 54-9 signs attached. See associated Map of Survey dated October 17, 2023 for survey-related information.

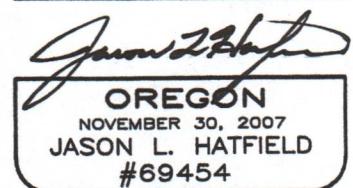
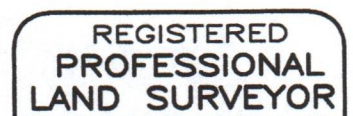
**RESTORATION BY, STAMP AND DATE:**

Work Performed October 11, 2023  
Survey completed October 17, 2023

Jason L. Hatfield, PLS  
Daniel B. Lee, Survey Tech

USDA FOREST SERVICE  
NORTHEAST OREGON LAND ZONE  
1550 Dewey Avenue, Suite A  
Baker City, OR 97814  
(541) 523-1283

FILED *December 20, 2023*  
BAKER COUNTY SURVEYOR  
SURVEY NO. 8-37-178  
9-37-346



EXPIRES: 6/30/2025