

# RECORD OF LAND CORNER MONUMENTATION

CORNER # 7 OF TELEPHONE LODGE, MS 378,  
SITUATED IN SECTION 32, T. 8 S., R. 37 E., W.M.

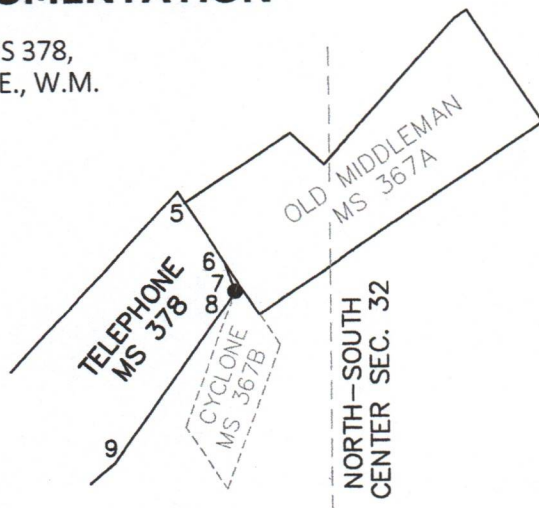
**ORIGINALLY ESTABLISHED BY:** John Hagel U.S. Deputy Mineral Surveyor

**MINERAL SURVEY NUMBER:** 378 (Amended)

**COMPLETION DATE:** December 15, 1900

**SUBSEQUENT SURVEYS:**

- ▶ Perpetuated by Leland Myers, PLS #699, as evidenced by map of survey filed December 22, 2003, as 8-37-135 & 9-37-279 in the Baker County Surveyor's office



**ORIGINAL DESCRIPTION:** Set a white fir post 4 ins. square 4 1/2 ft. long 18 inches in the ground with a mound of earth around it marked TEL C7- 378

Cor. No. 1 of the Cyclone Mill Site Sur. 367-B bears N.30°30'E. 10.5 ft.

A white fir tree 12 ins. in diam. bears S.40°25'E. 23.2 ft.

A white fir tree 14 ins. in diam. bears S.19°W. 22.6 ft.

both blazed and marked TEL C7 - 378 - BT

**MYERS' 2003 DESCRIPTION:** Legend on map designates the symbol at corner "Set 30" x 1" Galv. Pipe Monument with 2 1/2" Brass Cap"

**EVIDENCE FOUND:** Found a 1 1/2" galvanized iron pipe with a 2 1/2" brass cap, marked as shown below, projecting 2" above ground in 2 ft. diameter mound of stone.

From which,

- ▶ A 1 1/2" galvanized iron pipe with a 2 1/2" brass cap, marked for Corner #1 of Cyclone Mill Site, bears N.22°E, 9.96 ft.
- Also from which,

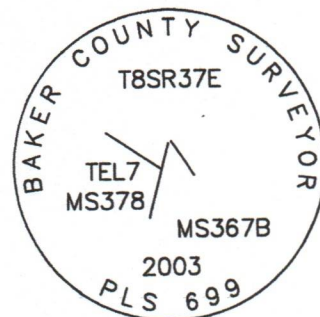
- ▶ A western larch, 11" dbh, bears S.38°W., 29.2 ft. with single healed blaze (unrecorded).

I searched for, but found no remaining evidence of original BT's.

**DESCRIPTION OF MONUMENTS AND ACCESSORIES SET AND METHODS USED:**

I accept the brass-capped monument as the best available evidence of the original corner.

CORNER MONUMENT  
MARKED:



Painted a 6 inch red band around the bearing tree, painted the blazes red, and attached USFS 54-3 and 54-9 signs. Used a magnetic compass with 14° East declination to measure bearings. Used a steel tape to measure the distance to BT, measuring to the found 60d nail with washer set in the side-center at the root crown. See associated Map of Survey dated October 17, 2023 for survey-related information.

**RESTORATION BY, STAMP AND DATE:**

Work performed July 18, 2023  
Survey completed October 17, 2023

Jason L. Hatfield, PLS  
Daniel B. Lee, Survey Tech

USDA FOREST SERVICE  
NORTHEAST OREGON LAND ZONE  
1550 Dewey Avenue, Suite A  
Baker City, OR 97814  
(541) 523-1283

FILED December 20, 2023  
BAKER COUNTY SURVEYOR  
SURVEY NO. 8-37-175

REGISTERED  
PROFESSIONAL  
LAND SURVEYOR

*Jason L. Hatfield*  
OREGON  
NOVEMBER 30, 2007  
JASON L. HATFIELD  
#69454

EXPIRES: 6/30/2025