

BASIS OF BEARINGS

GEODETIC NORTH
DERIVED BY G.P.S. OBSERVATION TAKEN AT THE
SOUTH 1/4 CORNER SECTION 29

SCALE: 1"=600'

NARRATIVE

SEE NARRATIVE FILED SEPARATELY, ATTACHED HERETO
AND BY THIS REFERENCE MADE A PART HEREOF

NOTES

THE LOCATIONS OF MINING CLAIMS, SECTION LINES, AND
SECTION SUBDIVISIONAL LINES SHOWN HEREON WITHOUT
MEASURED DIMENSIONS ARE APPROXIMATE AND ARE
PROTRACTED FOR GENERAL INFORMATION ONLY

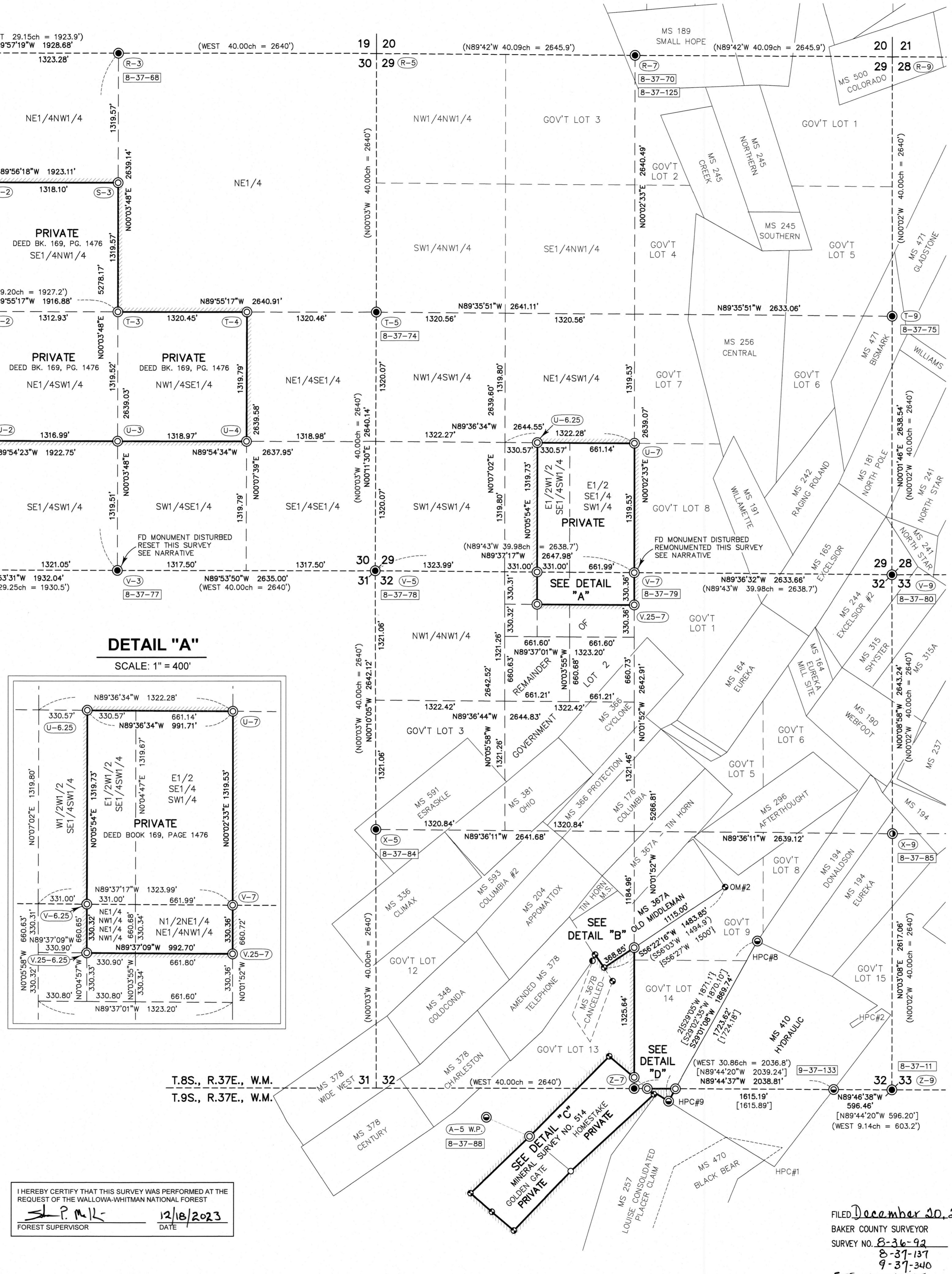
REFERENCES

- MAPS OF SURVEYS:
BAKER COUNTY SURVEY NO. S 8-37-135, 9-37-85, AND 9-37-279
- LAND CORNER MONUMENTATION RECORDS:
BAKER COUNTY SURVEY NO. S 8-36-3, 8-36-4, 8-36-5, 8-37-3,
8-37-4, 8-37-5, 8-37-10, 8-37-11, 8-37-88, 8-37-70, 8-37-74, 8-37-75,
8-37-77, 8-37-78, 8-37-79, 8-37-80, 8-37-84, 8-37-85, 8-37-88,
8-37-91, 8-37-125, 8-37-118, 8-37-132, 8-37-133, AND 9-37-134
- U.S. FOREST SERVICE CORNER CARDS
GENERAL LAND OFFICE RECORDS
BAKER COUNTY DEEDS
DEED BOOK 169, PAGE 1476
DEED NO. S 73 26 055, 91 17 40, 91 17 42, AND B19350250

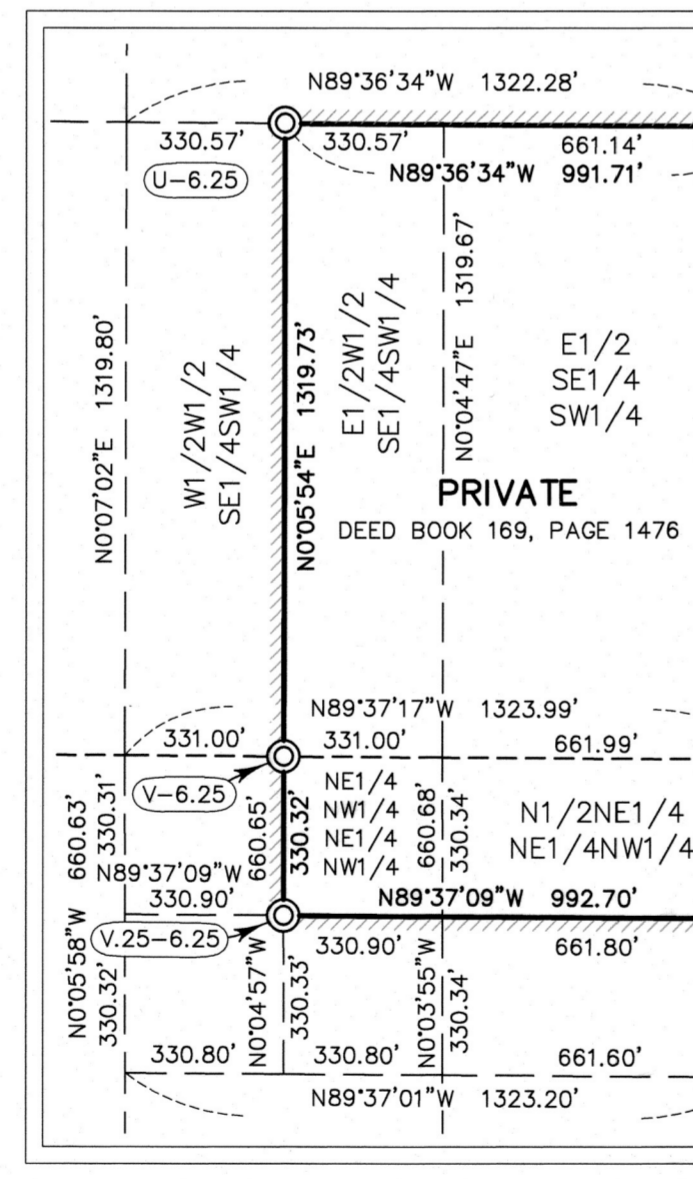
LEGEND

- FOUND 1" IRON PIPE WITH ATTACHED 2 1/2" BRASS CAP FROM G.L.O. SURVEY BY LINCOLN E. WILKES, U.S. CADASTRAL ENGINEER, UNDER GROUP NO. 107, APPROVED MAY 26, 1927
- FOUND 2" IRON PIPE WITH ATTACHED 2 1/2" BRASS CAP FROM G.L.O. SURVEY BY LINCOLN E. WILKES, U.S. CADASTRAL ENGINEER, UNDER GROUP NO. 107, APPROVED MAY 26, 1927
- FOUND 2 1/2" ALUMINUM PIPE WITH ATTACHED 2 1/2" ALUMINUM CAP SET BY WILLIAM L. HANLEY, PLS #1639, DURING THE "WINDY CADASTRAL SURVEY", MAP OF SURVEY FILED MARCH 6, 1986 AS SURVEY NO. 9-37-85 IN THE BAKER COUNTY SURVEYORS' OFFICE
- FOUND UNRECORDED 1 1/2" GALVANIZED IRON PIPE WITH ATTACHED 2 1/2" BRASS CAP SET BY JOHN R. MITCHELL, AN UNLICENSED SURVEY TECHNICIAN, DOCUMENTED ON U.S.F.S. CORNER CARDS
- FOUND 1 1/2" GALVANIZED IRON PIPE WITH ATTACHED 2 1/2" BRASS CAP SET BY JOHN R. MITCHELL, DOCUMENTED ON U.S.F.S. CORNER CARDS, ACCEPTED AND RE-STAMPED IN 2003 BY LELAND MYERS, PLS #699, AS PER SURVEY NO. S 8-37-135 AND 9-37-279
- FOUND 1 1/2" GALVANIZED IRON PIPE WITH ATTACHED 2 1/2" BAKER COUNTY SURVEYOR BRASS CAP SHOWN AS BEING SET BY PLS #699 ON SURVEY NO. S 8-37-135 AND 9-37-279
- FOUND 1 1/2" GALVANIZED IRON PIPE WITH ATTACHED 2 1/2" BRASS CAP MARKED FOR THE CORNER AND MARKED "CS 1981" AS DESCRIBED ON CORNER MONUMENTATION RECORD FILED FEBRUARY 5, 1986 AS SURVEY NO. 8-37-85 IN THE BAKER COUNTY SURVEYORS' OFFICE
- SET A 2" X 3/8" ALUMINUM PIPE WITH 3/4" USFS ALUMINUM CAP PROPERLY MARKED FOR THE CORNER, AND MARKED "PLS 69454" - SEE CORNER MONUMENTATION RECORDS FILED SEPARATELY FOR MORE DETAILS
- SET A 5/8" X 24" IRON PIN WITH ATTACHED 2 1/2" ALUMINUM CAP PROPERLY MARKED FOR THE CORNER, AND MARKED "PLS 69454" - SEE CORNER MONUMENTATION RECORDS FILED SEPARATELY FOR MORE DETAILS
- () RECORD BEARING AND DISTANCE FROM GENERAL LAND OFFICE SURVEY BY LINCOLN E. WILKES, U.S. CADASTRAL ENGINEER, UNDER GROUP NO. 107, APPROVED MAY 26, 1927
- [] RECORD BEARING AND DISTANCE FROM "WINDY CADASTRAL SURVEY" BY WILLIAM L. HANLEY, PLS #1639 RECORDED AS SURVEY NO. 9-37-85 IN THE BAKER COUNTY SURVEYORS' OFFICE
- [] RECORD BEARING AND DISTANCE FROM SURVEY BY LELAND MYERS, PLS #699 RECORDED AS SURVEY NO. S 8-37-135 AND 9-37-279 IN THE BAKER COUNTY SURVEYORS' OFFICE
- { } RECORD BEARING AND DISTANCE FROM MINERAL SURVEY NO. 387 A & B, SURVEYED AUGUST 12-15, 1899, BY CHARLES M. FOSTER, U.S. DEPUTY MINERAL SURVEYOR
- { } RECORD BEARING AND DISTANCE FROM AMENDED MINERAL SURVEY NO. 378, SURVEYED OCTOBER 10-13, 1900 BY JOHN HAGEL, U.S. DEPUTY MINERAL SURVEYOR
- { } RECORD BEARING AND DISTANCE FROM MINERAL SURVEY NO. 410, SURVEYED OCTOBER 10-13, 1900 BY JOHN HAGEL, U.S. DEPUTY MINERAL SURVEYOR
- { } RECORD BEARING AND DISTANCE FROM MINERAL SURVEY NO. 514, SURVEYED JUNE 3-4, 1903 BY CHARLES M. FOSTER, U.S. DEPUTY MINERAL SURVEYOR
- (R-5) PLS CORNER INDEX DESIGNATION
- (B-37-68) BAKER COUNTY SURVEY NUMBER FROM WHICH FOUND MONUMENT WAS ESTABLISHED

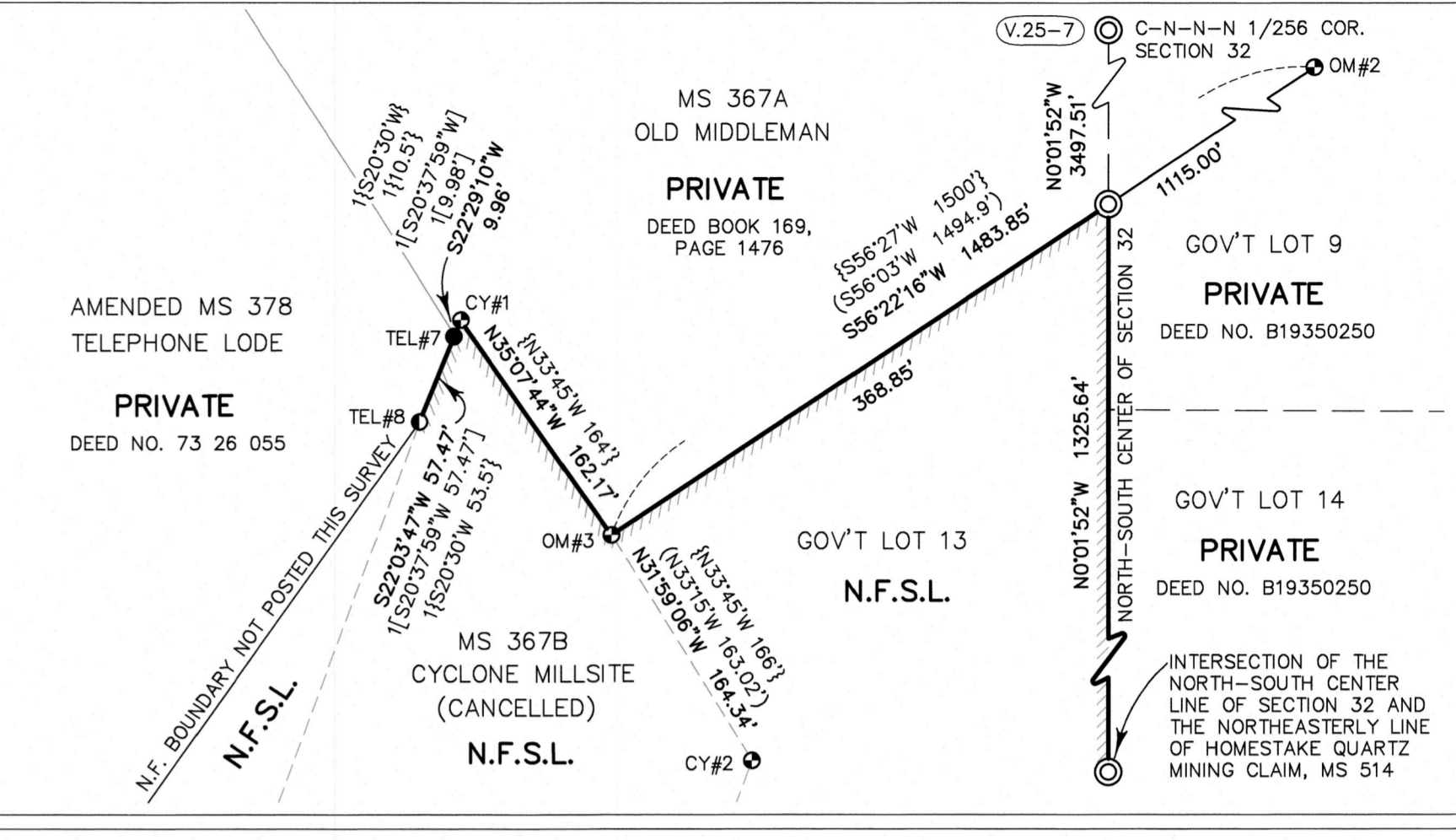
N.F.S.L. NATIONAL FOREST SYSTEM LAND
NATIONAL FOREST BOUNDARY POSTED THIS SURVEY



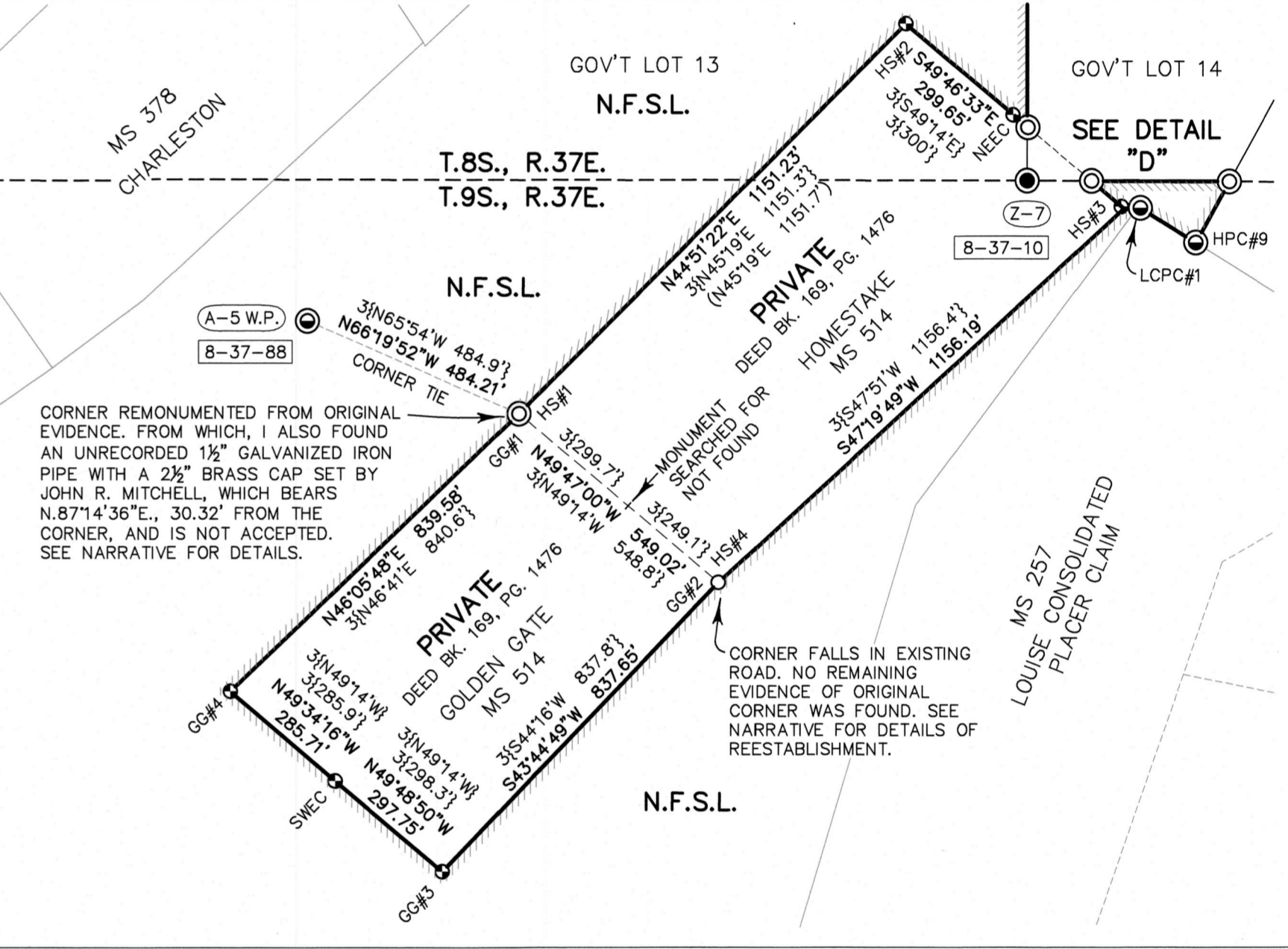
DETAIL "A"
SCALE: 1" = 400'



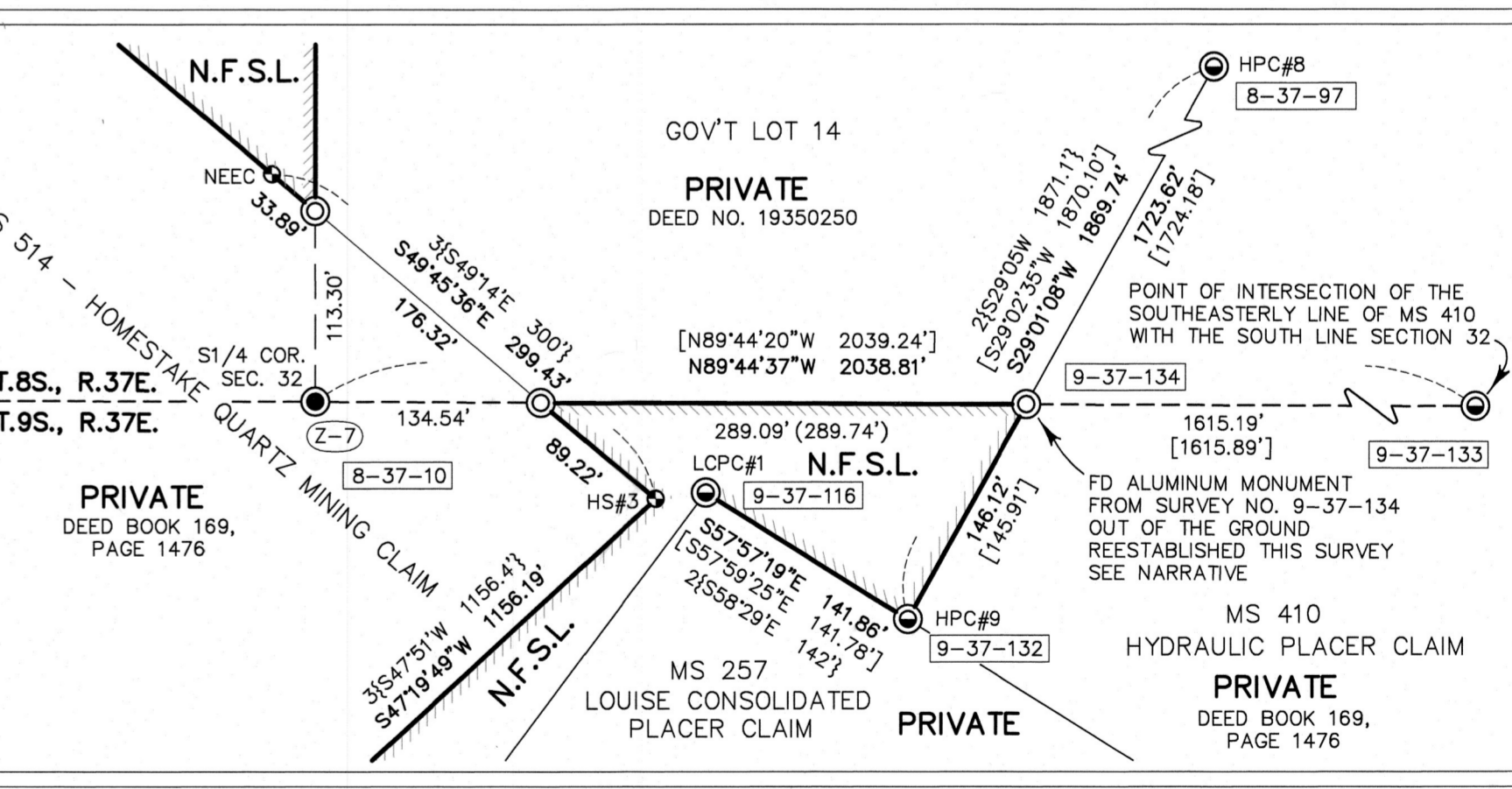
DETAIL "B"
SCALE: 1" = 100'



DETAIL "C"
SCALE: 1" = 300'



DETAIL "D"
SCALE: 1" = 100'



I HEREBY CERTIFY THAT THIS SURVEY WAS PERFORMED AT THE
REQUEST OF THE WALLOWA-WHITMAN NATIONAL FOREST

J.P. Miller
FOREST SUPERVISOR

12/18/2023
DATE

FILED December 20, 2023
BAKER COUNTY SURVEYOR
SURVEY NO. 8-36-92
8-31-137
9-37-340
SEE NARRATIVE

REGISTERED
PROFESSIONAL
LAND SURVEYOR

Jason L. Hatfield
OREGON
NOVEMBER 25, 2007
JASON L. HATFIELD
#69454
EXPIRES: 6/30/2025



UNITED STATES DEPARTMENT OF AGRICULTURE
FOREST SERVICE
REGION 6 - NORTHEAST OREGON LAND ZONE
1550 DEWEY AVENUE, SUITE A - BAKER CITY, OREGON 97814 - (541) 523-1283

MAP OF SURVEY
A DEPENDENT RESURVEY AND SUBDIVISION OF SECTIONS 29, 30, AND 32,
T.8S., R.37E., W.M., AND THE RETRACEMENT OF PORTIONS OF MINERAL
SURVEY NO. S 257, 367A&B, 378, 410, AND 514, SITUATED IN
T.8S., R.37E., AND T.9S., R.37E., W.M., BAKER COUNTY, OREGON

SURVEYED FOR	WALLOWA-WHITMAN NATIONAL FOREST
SURVEYED BY	JLH SURVEY COMPLETED: 10/17/2023
SCALE: AS SHOWN	DRAWN BY: JLH