

RECORD OF SURVEY - UTILITY EASEMENT

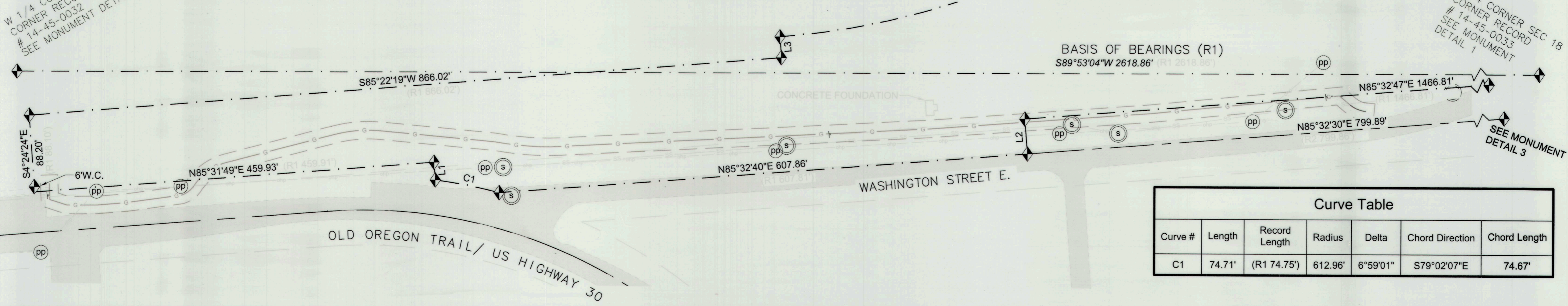
CASCADE NATURAL GAS

SITUATED IN THE NE 1/4 AND NW 1/4 OF THE SW 1/4 OF SECTION 18,
TOWNSHIP 14 SOUTH, RANGE 45 EAST, W.M.
BAKER COUNTY, OREGON

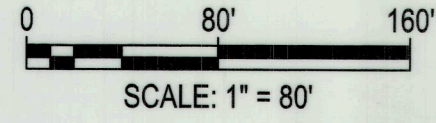
Line Table			
Line #	Length	Record Length	Direction
L1	20.23'	(R1 20.14')	S4°16'41"E
L2	39.97'	(R1 40.00')	N4°28'12"W
L3	24.18'	(R1 24.18')	S4°24'36"E

W 1/4 CORNER SEC 18
CORNER RECORD
14-45-0032
SEE MONUMENT
DETAIL 2

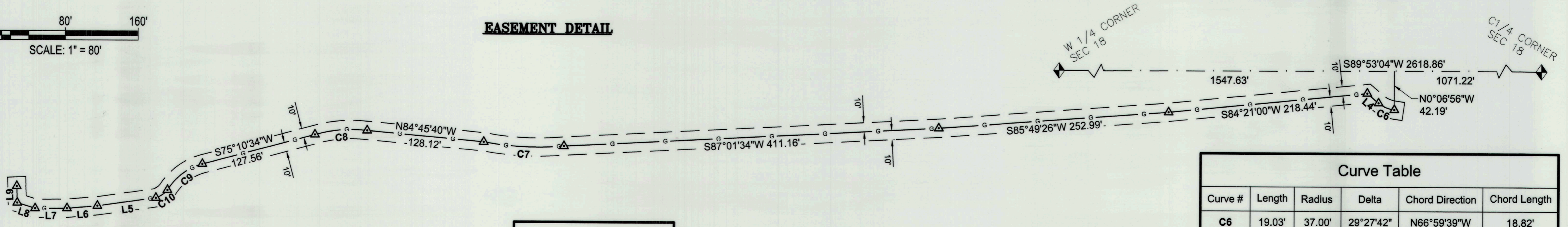
C 1/4 CORNER SEC 18
CORNER RECORD
14-45-0033
SEE MONUMENT
DETAIL 1



Curve Table						
Curve #	Length	Record Length	Radius	Delta	Chord Direction	Chord Length
C1	74.71'	(R1 74.75')	612.96'	6°59'01"	S79°02'07"E	74.67'



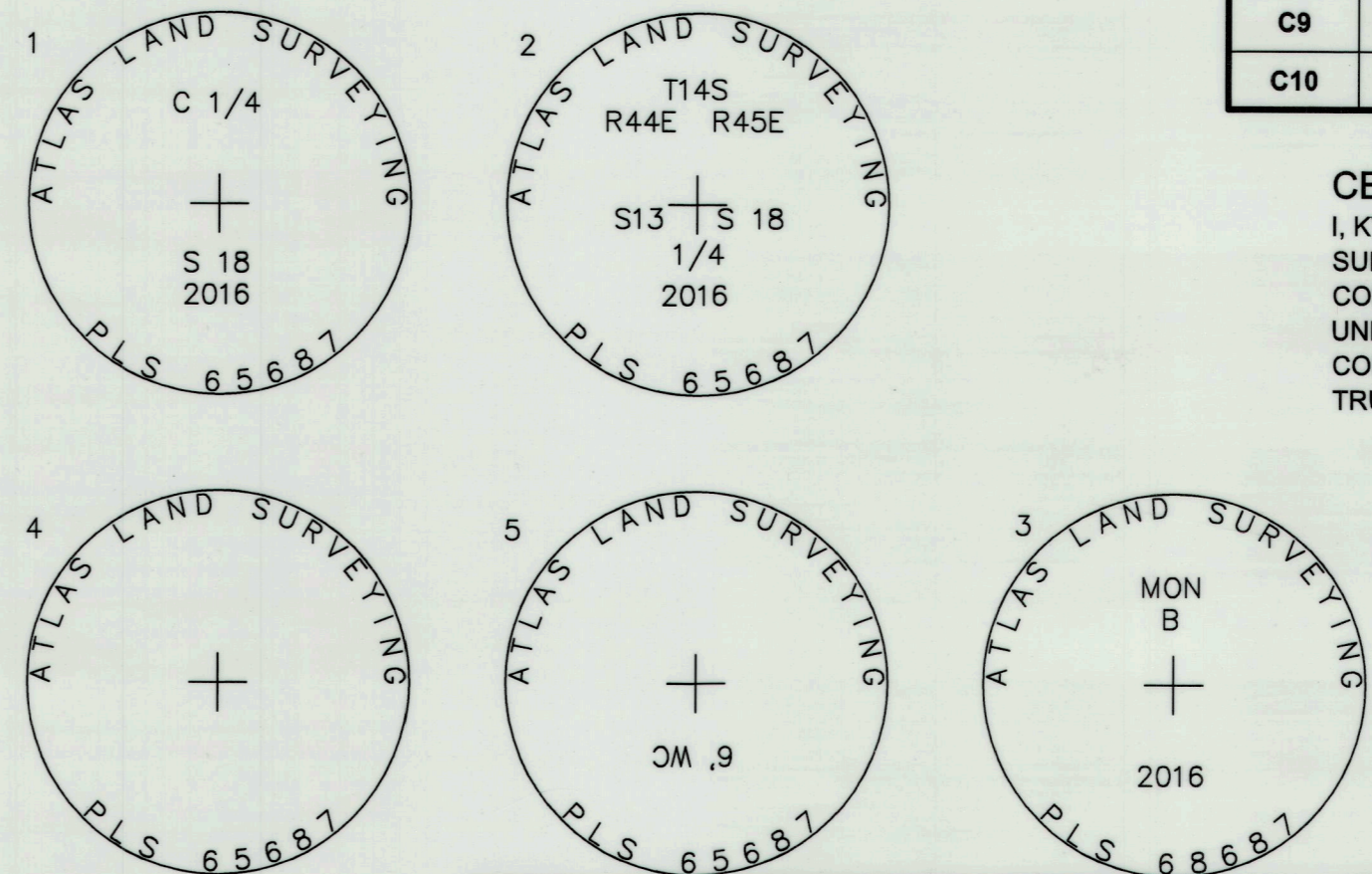
EASEMENT DETAIL



Curve Table					
Curve #	Length	Radius	Delta	Chord Direction	Chord Length
C6	19.03'	37.00'	29°27'42"	N66°59'39"W	18.82'
C7	88.64'	333.00'	15°15'03"	N87°22'31"W	88.38'
C8	58.01'	145.88'	22°46'59"	S85°23'25"W	57.63'
C9	48.93'	64.00'	43°48'09"	S53°10'41"W	47.75'
C10	15.40'	28.00'	31°30'35"	S55°16'04"W	15.21'

Line Table		
Line #	Length	Direction
L4	16.43'	N49°59'14"W
L5	64.80'	S82°01'10"W
L6	33.46'	S85°04'01"W
L7	34.91'	S89°41'53"W
L8	20.57'	N72°41'23"W
L9	18.17'	N2°01'40"W

MONUMENT DETAIL



REFERENCE DOCUMENTS:
(R1) 14-45-0030
(R2) 14-45-0034
QUITCLAIM DEED 95-46-111

BASIS OF BEARINGS:
HORIZONTAL DATUM USED FOR PROJECT IS NAD83(2011), OREGON COORDINATE SYSTEM (OCRS), ONTARIO ZONE, PROJECTION PARAMETERS ARE PUBLISHED IN THE OREGON ADMINISTRATIVE RULES (OAR) 734-005-015. MEASURED BEARINGS ARE GRID PER THE PROJECT DATUM. COORDINATES FROM CONTROL POINTS SHOWN ON ROS 14-44-0034 WERE CHECKED AND UTILIZED FOR THIS PROJECT

NARRATIVE:
THIS SURVEY WAS COMPLETED FOR CASCADE NATURAL GAS. THE PURPOSE OF THE SURVEY IS TO CREATE A TWENTY (20) FOOT WIDE EASEMENT, BEING 10 FEET ON EACH SIDE OF AN EXISTING GAS LINE AS SHOWN ON THIS MAP. A RETRACEMENT SURVEY OF A PORTION OF ROS 14-45-0030 WAS DONE TO ESTABLISH THE LOCATION OF THE EASEMENT ON THE PARCEL. ALL MONUMENTS SHOWN WERE FOUND TO BE IN SUBSTANTIAL CONFORMANCE TO STANDARD SURVEY PRACTICE. CONTROL POINTS LISTED ON ROS 14-45-0034 WERE FOUND AND UTILIZED ON THIS SURVEY TO VERIFY MONUMENT LOCATIONS SHOWN ON BOTH AFOREMENTIONED SURVEYS.

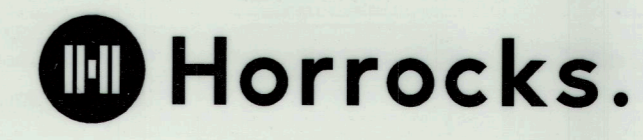
CERTIFICATE OF SURVEYOR
I, KYLE GOCHNOUR, A REGISTERED PROFESSIONAL LAND SURVEYOR HEREBY CERTIFY THAT THIS SURVEY WAS COMPLETED ON APRIL 11, 2023, AND WAS MADE BY ME OR UNDER MY DIRECT SUPERVISION, THAT THE BOUNDARY CORNERS ARE MARKED AS SHOWN AND THAT THIS MAP IS A TRUE AND ACCURATE REPRESENTATION OF SAID SURVEY.

REGISTERED PROFESSIONAL LAND SURVEYOR
Kyle Gochnour 8/29/23
OREGON
SEPT. 10, 2019
KYLE GOCHNOUR
94710
EXPIRATION DATE: 06/30/2025

- LEGEND:**
- FOUND ALUMINUM CAP MONUMENT AS NOTED
 - CALCULATED POINT
 - SECTION LINE
 - PARCEL BOUNDARY LINE
 - RIGHT-OF-WAY
 - ROAD CENTERLINE
 - EXISTING GAS LINE
 - EXISTING OVERHEAD POWER LINE
 - EXISTING SANITARY SEWER LINE
 - EXISTING ASPHALT PAVEMENT
 - POWER POLE
 - SANITARY SEWER MANHOLE
 - P.O.B. POINT OF BEGINNING
 - P.O.C. POINT OF COMMENCEMENT
 - N.T.S. NOT TO SCALE
 - A.P.N. ASSESSOR'S PARCEL NUMBER
 - R.O.S. RECORD OF SURVEY
 - INST. # INSTRUMENT NUMBER

FILED August 31, 2023
BAKER COUNTY SURVEYOR
SURVEY NO. 14-45-37

2775 W. NAVIGATOR DR.
MERIDIAN, ID 83642
SUITE 210
(208) 895-2520



SHEET 1 OF 1
Surveyed by K. Gochnour and M. Turner in APRIL of 2023.
Project # ID-7663-23