

CORNER RESTORATION FORM

Township 14S Range 45E Section 18 County BAKER

State OREGON Date 9/23/16 Number L-01

Corner Designation : W¹/₄ CORNER, SECTION 18
 Previous Renewals (E¹/₄ CORNER, SECTION 13, T14S, R44E)

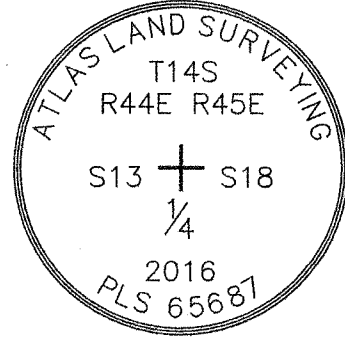
- Condition Report Only
- Not Found
- Renewed
- Surveyed In
- Referenced

Monument (s) Found: (Condition and Source)

NO MONUMENT WAS FOUND.

MONUMENT DETAIL

Found Set



Accessories Found:

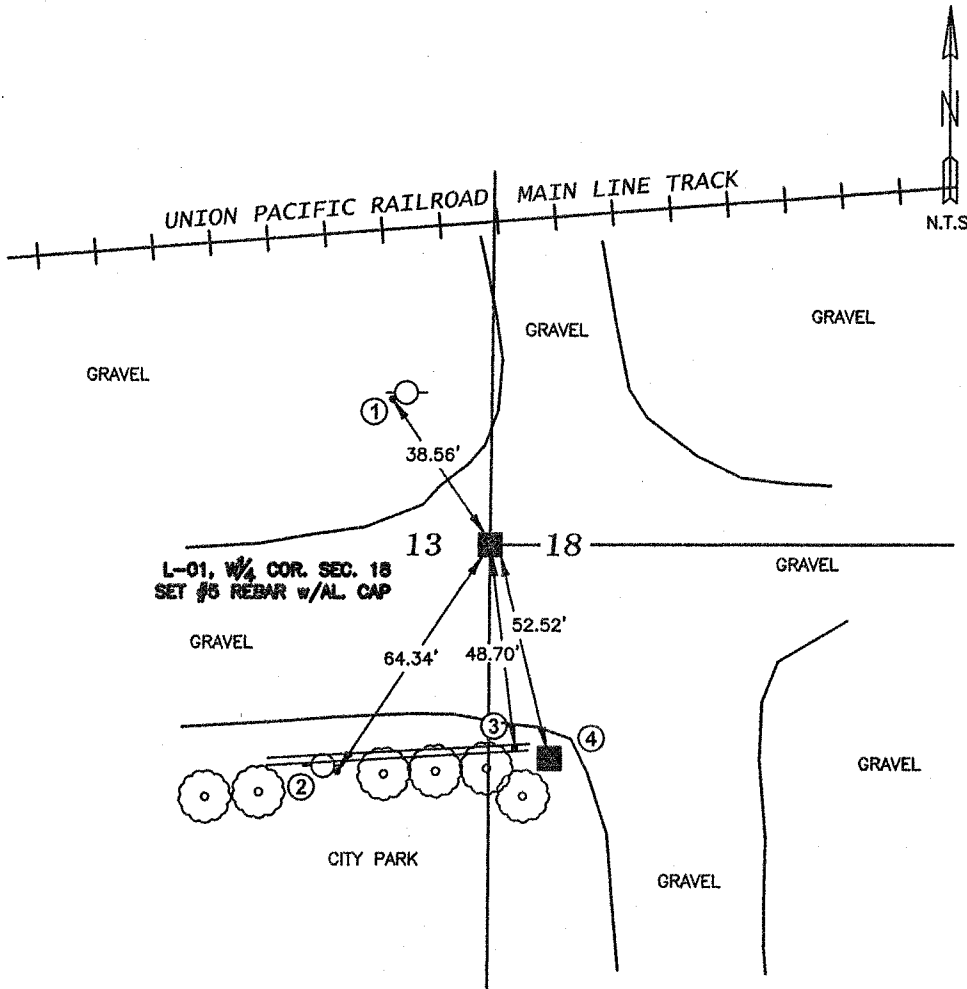
NO ACCESSORIES WERE FOUND

Monument & Accessories Set (Procedure and Description)

THE W¹/₄ CORNER OF SECTION 18 WAS COMPUTED BASED ON THE ORIGINAL PLAT OF HUNTINGTON, AND M.O.S. 14-45-0004; 14-44-0018; 14-44-0024, HOLDING FOUND SECTION CORNERS TO THE NORTH AND SOUTH.

- ① A MAG NAIL/DUPLEX NAIL WAS SET IN THE WEST FACE OF A POWER POLE, 38.56' NW'LY.
- ② A MAG NAIL/DUPLEX NAIL WAS SET IN THE EAST FACE OF A POWER POLE, 64.34' SW'LY.
- ③ A MAG NAIL/DUPLEX NAIL WAS SET 1' WEST OF THE EAST END OF A RR TIE BORDER, 48.70' S'LY
- ④ SET #4 REBAR/AL. CAP, 52.52' SE'LY

Sketch of Monument, Accessories and General Area



Surveyor's Seal

REGISTERED
PROFESSIONAL
LAND SURVEYOR

Dean J. Coon

OREGON
JANUARY 8, 2002
DEAN J. COON
65687LS

EXPIRES: 12/31/17

Agency ATLAS LAND SURVEYING



206 NW 9TH STREET
FRUITLAND, ID 83619

Party Chief D. COON

Notekeeper D. COON

Job No. 16-029A-TS-HE

Field Book 14452-01; p. 15

Date of Work 09/19/16

COUNTY SURVEYOR
FILING INFORMATION

By _____

Received Oct. 15, 2016

Filed _____

Survey No. 14-45-0032

Dwg. No. N/A

Index No. L-01