

CORNER RESTORATION FORM

Township 14S Range 45E Section 18 County BAKER

State OREGON Date 9/23/16 Number J-03

Corner Designation : N¹/₄ CORNER, SECTION 18

Previous Renewals _____

- Condition Report Only
- Not Found
- Renewed
- Surveyed In
- Referenced

Monument (s) Found: _____ (Condition and Source)

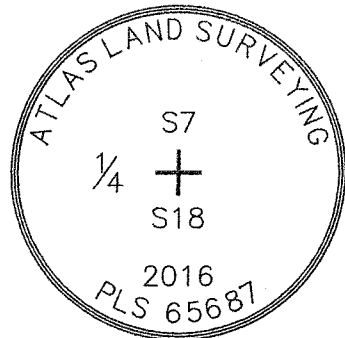
NO MONUMENT WAS FOUND

Accessories Found: _____

NO ACCESSORIES WERE FOUND

MONUMENT DETAIL

Found Set

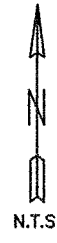
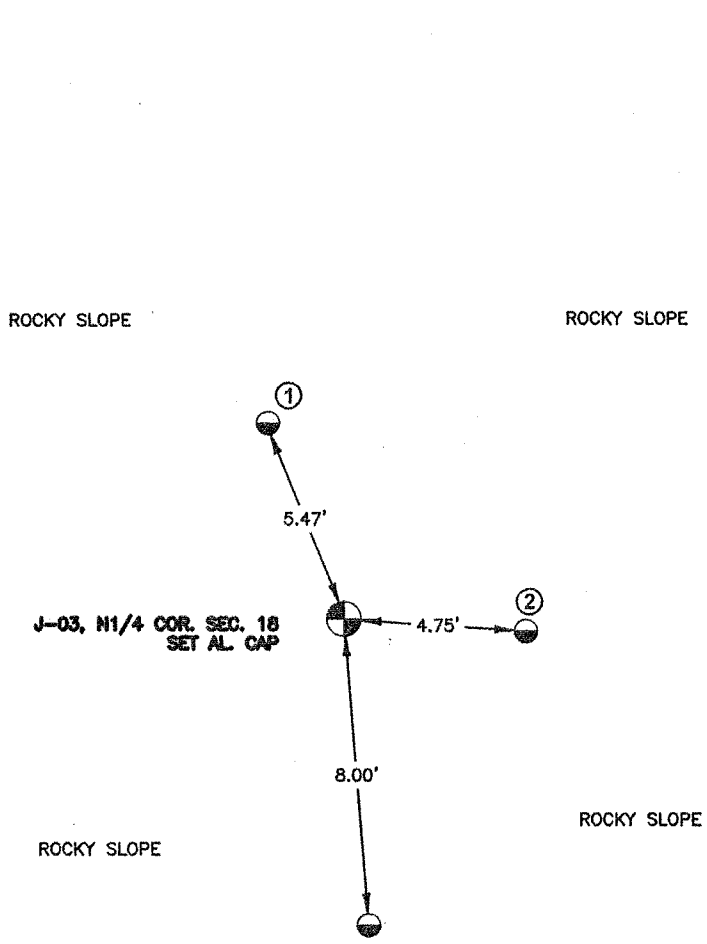


Monument & Accessories Set (Procedure and Description)

THE MONUMENT IS LOCATED ON A STEEP, SW FACING SLOPE
THREE ACCESSORS WERE SET:

- ① AN 8" HELICAL NAIL/SPIKE, 5.47' N'LY (MEASURED TO N. EDGE OF SPIKE HEAD)
- ② AN 8" HELICAL NAIL/SPIKE, 4.75' E'LY (MEASURED TO E. EDGE OF SPIKE HEAD)
- ③ AN 8" HELICAL NAIL/SPIKE, 8.00' S'LY (MEASURED TO S. EDGE OF SPIKE HEAD)

Sketch of Monument, Accessories and General Area



Surveyor's Seal

REGISTERED
PROFESSIONAL
LAND SURVEYOR

Dean J. Coon

OREGON
JANUARY 8, 2002
DEAN J. COON
65687LS

EXPIRES: 12/31/17

Agency ATLAS LAND SURVEYING



206 NW 9TH STREET
FRUITLAND, ID 83619

Party Chief D. COON

Notekeeper D. COON

Job No. 16-029A-TS-HE

Field Book 14452-01; p. 16

Date of Work 09/19/16

COUNTY SURVEYOR FILING INFORMATION

By _____

Received Oct. 15, 2016

Filed _____

Survey No. 14-45-0031

Dwg. No. N/A

Index No. J-03