

# RECORD OF SURVEY ~ BOUNDARY RETRACEMENT

WITHIN NW<sup>1</sup>/<sub>4</sub> AND THE SW<sup>1</sup>/<sub>4</sub> OF SEC. 18  
TOWNSHIP 14 SOUTH, RANGE 45 EAST, W.M.  
BAKER COUNTY, OREGON

## NARRATIVE

THE FOLLOWING OBSERVATIONS AND OPINIONS ARE SUBMITTED REGARDING THE VARIOUS UNCERTAINTIES IN THE LOCATION OF LINES AND CORNERS ESTABLISHED OR REESTABLISHED FOR THIS SURVEY, MADE AT THE REQUEST OF HOLLADAY ENGINEERING, FOR THE CITY OF HUNTINGTON, TO SURVEY THE BOUNDARIES OF TL900 (MAP 14-45-18), IN A PART OF THE NW<sup>1</sup>/<sub>4</sub> AND SW<sup>1</sup>/<sub>4</sub> OF SECTION 18 T. 14 S., R. 45 E., W.M., BAKER COUNTY, OREGON. THERE MAY BE UNWRITTEN RIGHTS ASSOCIATED WITH THESE UNCERTAINTIES:

### A) AVAILABILITY/CONDITION OF REFERENCE MONUMENTS

**SECTION LINES**  
THE MONUMENTS FOUND AND NOTED AT THE SECTIONAL CORNERS SHOWN HEREON WERE USED AS THE CONTROLLING MONUMENTS TO DETERMINE THE BOUNDARIES OF THE SUBJECT TRACT.  
THE NORTHEAST CORNER OF SECTION 18 WAS COMPUTED BASED ON FOUND MONUMENTATION FROM M.O.S. NO. 14-45-10.  
THE N<sup>1</sup>/<sub>4</sub> CORNER OF SECTION 18 WAS SEARCHED FOR, BUT NOT FOUND. IT WAS PROPORTIONED BETWEEN THE FOUND PIPE AT THE NW COR. AND THE COMPUTED LOCATION OF THE NE COR., BASED ON RECORD G.L.O. DATA.  
THE W<sup>1</sup>/<sub>4</sub> CORNER OF SECTION 18 WAS COMPUTED BASED ON THE ORIGINAL PLAT OF HUNTINGTON, AND M.O.S. 14-45-0004; 14-44-0018; 14-44-0024, HOLDING FOUND SECTION CORNERS TO THE NORTH AND SOUTH.  
A 1" I.D. IRON PIPE WAS FOUND FLUSH WITH THE GROUND, IN A SMALL PILE OF STONES, AT THE C<sup>1</sup>/<sub>4</sub> OF THE SECTION. ITS POSITION IS 3.6' WEST OF THE COMPUTED POSITION OF THE C<sup>1</sup>/<sub>4</sub> BASED ON INTERSECTING LINES BETWEEN THE 1/4 CORNERS OF THE SECTION. THE IRON PIPE WAS ACCEPTED AS THE MONUMENT MARKING THE C<sup>1</sup>/<sub>4</sub> CORNER, AND A #5 REBAR/AL. CAP WAS DRIVEN THROUGH THE PIPE. THE MOUND OF STONES WAS REHABILITATED. A MAP (HUNTINGTON-YARDS RIGHT-OF-WAY & TRACK MAP (V. Ore. 4/1)) INDICATES A 2"x4"x2' STAKE, MARKED "1/4" IN A PILE OF ROCK.

**LINES WITHIN THE PLAT OF HUNTINGTON TOWNSHIP**  
THE ORIGINAL PLAT OF HUNTINGTON DESCRIBES FOUR PERMANENT MONUMENTS IDENTIFIED AT CORNERS "A", "B", "C", & "D". MON. "A" IS CURRENTLY AN ODOT AL. CAP MONUMENT IN CASE AT WASHINGTON AND 1ST ST. EAST; MON. "C" IS A 1" IRON ROD; "D" IS AN O.S.H.D. BRASS CAP SET IN CONCRETE.  
MON. "B" WAS SEARCHED FOR, BUT NOT FOUND. ITS POSITION WAS CALCULATED BY DISTANCES SHOWN ON M.O.S. 14-45-0020 FROM MON. "A" AND MON. "C", AND WAS MONUMENTED WITH A #5 REBAR W/AL. CAP. THE LINES OF THE BOUNDARY OF TL900 THAT CORRESPOND WITH THE LOTS AND BLOCKS OF THE ORIGINAL PLAT OF HUNTINGTON WERE COMPUTED BASED ON PROPORTION BETWEEN THESE MONUMENTS.

### B) INCONSISTENCIES OF OCCUPATION IN RELATION TO THE SURVEYED LINES

THE DEED MAKES REFERENCE TO CENTERLINE OF TRACK NO. 208. AS THIS TRACK IS NO LONGER IN EXISTENCE, RECORD BEARINGS AND DISTANCES WERE USED TO ESTABLISH THIS PORTION OF THE BOUNDARY. THE DEED ALSO MAKES REFERENCE TO CURVES OF THE CENTERLINE OF THE MAIN TRACK. THE MAIN TRACK WAS LOCATED AND COMPARED TO THE CURVE DATA FOUND IN THE DEED DESCRIPTION. THE PHYSICAL LOCATION OF THE TRACK FELL WELL INSIDE THE COMPUTED CURVES OF THE DEED. A REPRESENTATIVE OF THE UNION PACIFIC RAILROAD SAID IT IS LIKELY THAT THE YARD HAS BEEN RECONFIGURED SEVERAL TIMES OVER SEVERAL DECADES AND THE TRACKS ARE PROBABLY NOT IN THE SAME POSITION AS WHEN THE DEED WAS CREATED. THE SOLUTION USED HEREON HOLDS THE PHYSICAL LOCATION OF THE CENTERLINE OF THE TANGENT PORTION (RUNNING NORTHEAST FROM THE CURVES) OF THE MAIN TRACK. THE CURVE DATA (RADIUS AND CENTRAL ANGLES) OF THE DEED WERE THEN HELD AND MADE TO FIT THE DATA COMING OFF OF TRACK NO. 208. THIS SOLUTION HONORS THE INTENT OF THE DEED AND THE BEST AVAILABLE EVIDENCE OF THE LOCATION OF THE CURVES CALLED OUT IN THE DEED.

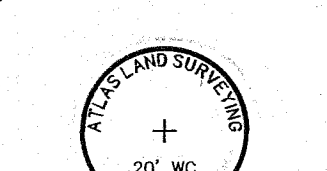
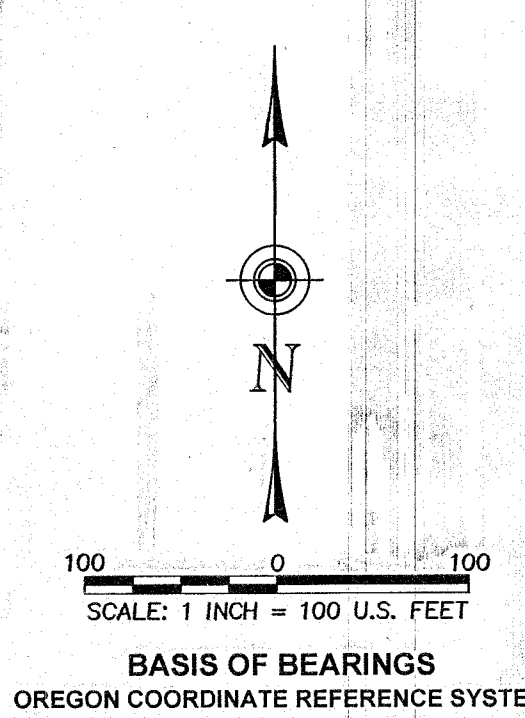
### C) DISCREPANCIES IN RECORD DOCUMENTS

THE DESCRIPTION OF THE PROPERTY SURVEYED (DEED INST. #95 46 111-125) DOES NOT INCLUDE THAT PORTION OF THE VACATED WASHINGTON STREET (COURT ORD. DATED 5-5-1887), HOWEVER, IT WAS REQUESTED THAT THAT PORTION BE MONUMENTED.

### D) RANDOM ERROR IN MEASUREMENTS

MEASUREMENTS TAKEN DURING THE COURSE OF THIS SURVEY WERE USING TOPCON HIPER V GPS RECEIVERS USING REAL-TIME KINEMATIC METHODS. UNCERTAINTIES DUE TO RANDOM ERROR IN THESE MEASUREMENTS ARE LESS THAN 0.05 FEET. SURVEY DATA WAS PROJECTED TO THE ONTARIO ZONE OF THE OREGON COORDINATE REFERENCE SYSTEM (A LOW DISTORTION MAP PROJECTION (LDP)); NO ROTATION WAS APPLIED.  
LDP Meta Data:  
Datum: NAD83 (2011 OPUS) CM: 117'00"00"W LAT. OF ORIGIN: 43°15'00"N  
FALSE NORTH: 0m FALSE EAST: 80,000m SCALE: 1,000100  
PROJECTION: TRANSVERSE MERCATOR

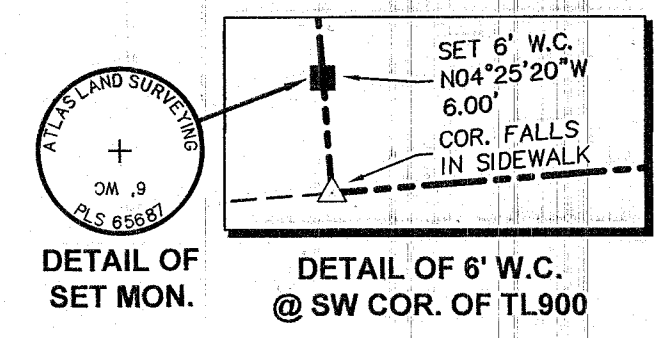
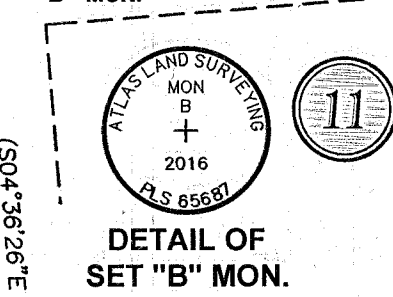
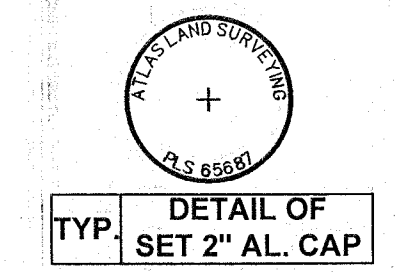
(ORS 209.250)



DETAIL OF W.C. SET  
N00°43'22"E 20.00'

C#	Δ	LENGTH	RAD.	CH. BRG.	L.C.
C6	6°59'14"	74.75'	612.96'	N79°02'10"W	74.70'
C7	22°08'00"	333.95'	864.49'	N74°31'24"E	331.88'
C8	5°58'00"	106.83'	1025.82'	N60°28'24"E	106.78'

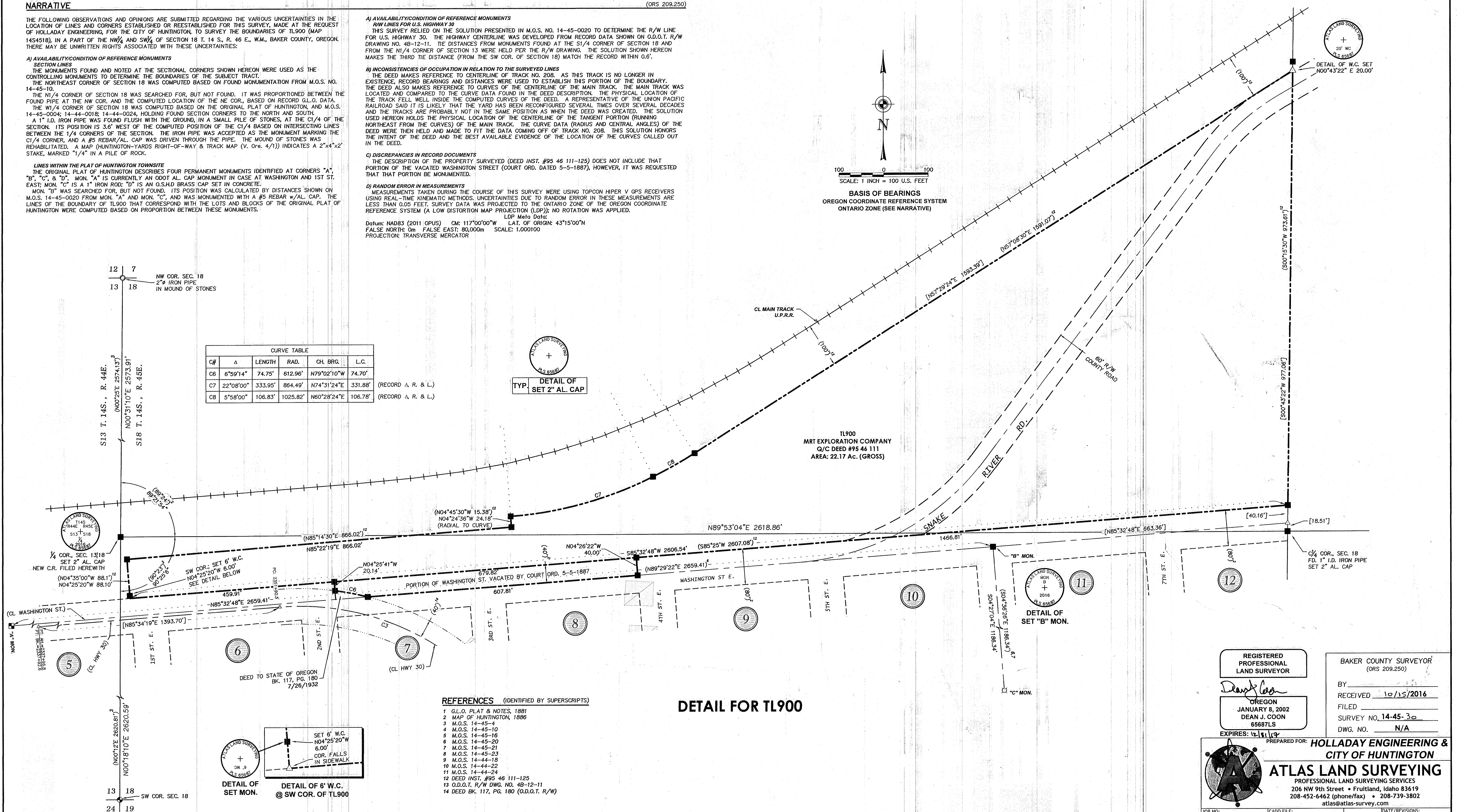
(RECORD Δ, R. & L.)  
(RECORD Δ, R. & L.)



### REFERENCES (IDENTIFIED BY SUPERSCRIPTS)

- G.L.O. PLAT & NOTES, 1881
- MAP OF HUNTINGTON, 1886
- M.O.S. 14-45-4
- M.O.S. 14-45-10
- M.O.S. 14-45-16
- M.O.S. 14-45-20
- M.O.S. 14-45-21
- M.O.S. 14-45-23
- M.O.S. 14-44-18
- M.O.S. 14-44-22
- M.O.S. 14-44-24
- DEED INST. #95 46 111-125
- O.D.O.T. R/W DWG. NO. 48-12-11
- DEED BK. 117, PG. 180 (O.D.O.T. R/W)

### DETAIL FOR TL900



REGISTERED PROFESSIONAL LAND SURVEYOR  
BAKER COUNTY SURVEYOR (ORS 209.250)  
BY: *Dean J. Coon*  
RECEIVED 10/15/2016  
FILED  
JANUARY 8, 2002  
DEAN J. COON  
65687LS  
EXPIRES: 12/31/13

PREPARED FOR: HOLLADAY ENGINEERING & CITY OF HUNTINGTON  
**ATLAS LAND SURVEYING**  
PROFESSIONAL LAND SURVEYING SERVICES  
206 NW 9th Street • Fruitland, Idaho 83619  
208-452-6462 (phone/fax) • 208-739-3802  
atlas@atlas-survey.com

JOB NO: 16-029A-TS-HE  
FIELD BOOK/PAGE: 14452-01, PG. 04-19  
CADD FILE: 16-029A-TS.dwg  
DRAWING NO.: C-0005  
DRAWN BY: DJC

SHEET 2 OF 2  
CHECKED BY: DJC  
DATE/REVISIONS: 08/08/16-SHEET REVIEW  
09/20/16-FINAL PLAT