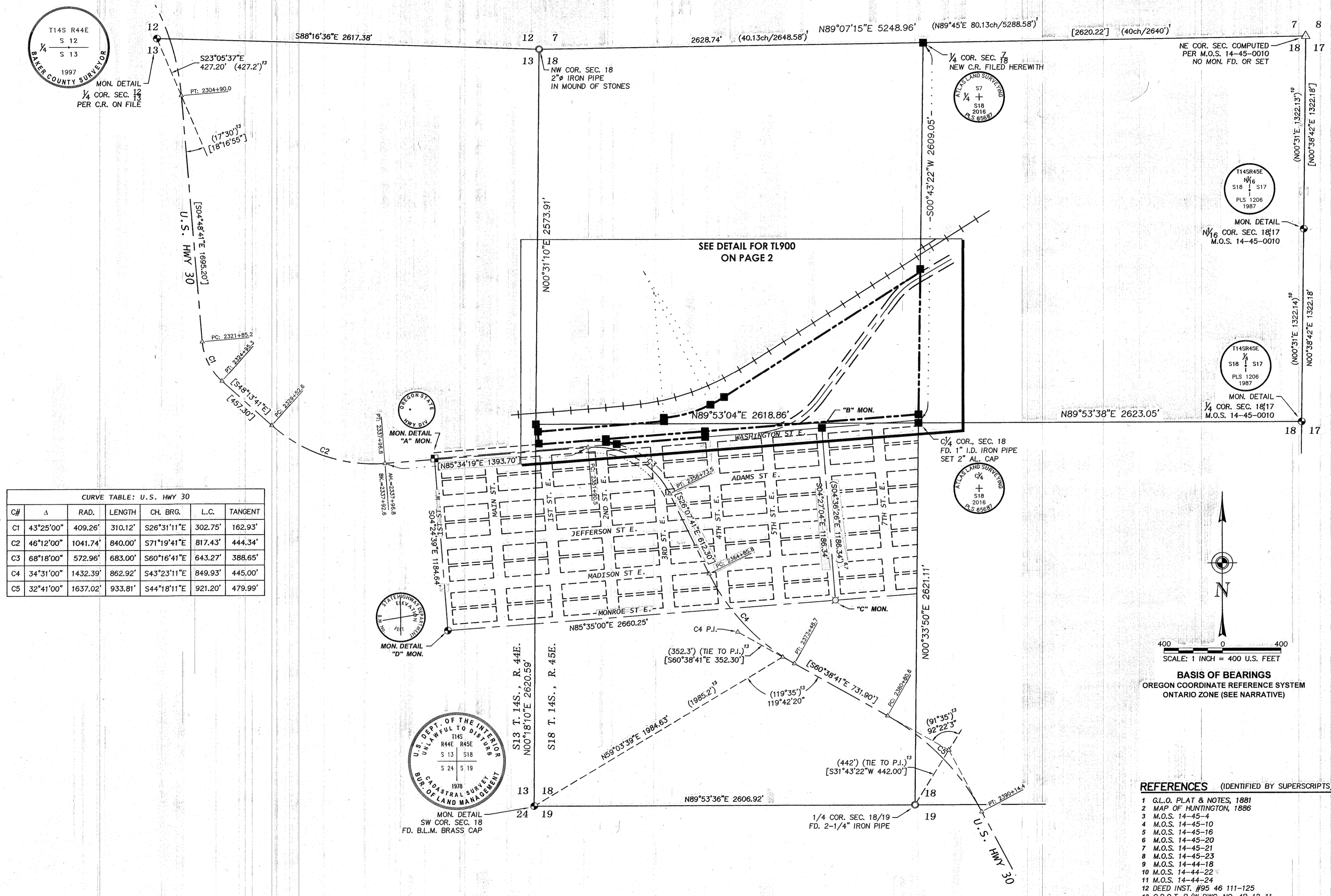


RECORD OF SURVEY ~ BOUNDARY RETRACEMENT

WITHIN NW¹/₄ AND THE SW¹/₄ OF SEC. 18
TOWNSHIP 14 SOUTH, RANGE 45 EAST, W.M.
BAKER COUNTY, OREGON

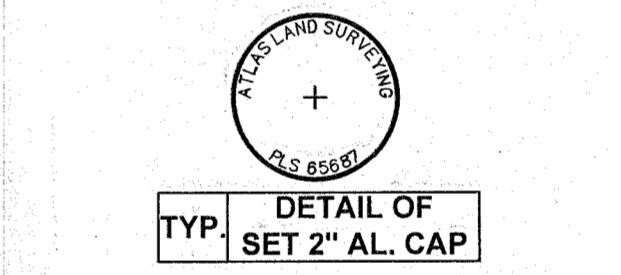


CURVE TABLE: U.S. HWY 30

C#	Δ	RAD.	LENGTH	CH. BRG.	L.C.	TANGENT
C1	43°25'00"	409.26'	310.12'	S26°31'11"E	302.75'	162.93'
C2	46°12'00"	1041.74'	840.00'	S71°19'41"E	817.43'	444.34'
C3	68°18'00"	572.96'	683.00'	S60°16'41"E	643.27'	388.65'
C4	34°31'00"	1432.39'	862.92'	S43°23'11"E	849.93'	445.00'
C5	32°41'00"	1637.02'	933.81'	S44°18'11"E	921.20'	479.99'

LEGEND, ABBREVIATIONS

BOUNDARY LINE	---
SECTION LINE	----
CENTER LINE	-----
ORIGINAL LINE	- - - - -
EASEMENT LINE	- · - · -
TRACK CENTER LINE	—+—+—
CALCULATED/TIE LINE	—+—+—
RECORD MEASUREMENT	()
CALCULATED VALUE	[]
FD. BRASS MON.	⊙
FD. AL. CAP	⊕
FD. IRON POST	⊙
FD. 1" IRON BAR	⊕
SET. #5 REBAR/2" AL. CAP	⊕
(SEE TYP. MON DETAIL)	
CALCULATED POINT	△
AL. CAP	⊕
BK. PG.	⊕
C.R.	⊕
COR.	⊕
EASE.	⊕
FD.	⊕
FNC.	⊕
FENCE	⊕
G.L.O.	⊕
INSIDE DIAMETER	⊕
INST.	⊕
P.I.	⊕
Q.C.D.	⊕
M.O.S.	⊕
SEC.	⊕
W.C.	⊕
GENERAL LAND OFFICE	⊕
QUITCLAIM DEED	⊕
MAP OF SURVEY	⊕
SECTION	⊕
WITNESS CORNER	⊕



SCALE: 1 INCH = 400 U.S. FEET

BASIS OF BEARINGS
OREGON COORDINATE REFERENCE SYSTEM
ONTARIO ZONE (SEE NARRATIVE)

- REFERENCES** (IDENTIFIED BY SUPERSCRIPTS)
- G.L.O. PLAT & NOTES, 1881
 - MAP OF HUNTINGTON, 1886
 - M.O.S. 14-45-4
 - M.O.S. 14-45-10
 - M.O.S. 14-45-16
 - M.O.S. 14-45-20
 - M.O.S. 14-45-21
 - M.O.S. 14-45-23
 - M.O.S. 14-44-18
 - M.O.S. 14-44-22
 - M.O.S. 14-44-24
 - DEED INST. #95 46 111-125
 - O.D.O.T. R/W DWG. NO. 48-12-11
 - DEED BK. 117, PG. 180 (O.D.O.T. R/W)

SURVEYORS CERTIFICATION (ORS 92.070)

I, DEAN J. COON, A REGISTERED PROFESSIONAL LAND SURVEYOR, HEREBY CERTIFY THAT, AT THE REQUEST OF HOLLADAY ENGINEERING AND THE CITY OF HUNTINGTON THE SURVEY SHOWN HEREON WAS COMPLETED BY ME OR UNDER MY SUPERVISION FROM 7/13/16 THROUGH 09/19/16, THAT THE LANDS SHOWN HEREON WERE SURVEYED AND ARE TRULY AND ACCURATELY REPRESENTED HEREON.

REGISTERED PROFESSIONAL LAND SURVEYOR OREGON JANUARY 8, 2002 DEAN J. COON 65687LS EXPIRES: 12/31/19	BAKER COUNTY SURVEYOR (ORS 209.250) BY _____ RECEIVED 16/15/2016 FILED _____ SURVEY NO. 14-45-50 DWG. NO. N/A
---	---

PREPARED FOR: **HOLLADAY ENGINEERING & CITY OF HUNTINGTON**

ATLAS LAND SURVEYING
PROFESSIONAL LAND SURVEYING SERVICES
206 NW 9th Street • Fruitland, Idaho 83619
208-452-6462 (phone/fax) • 208-739-3802
atlas@atlas-survey.com

JOB NO.: 16-029A-TS-HE	CADD FILE: 16-029A-TS.dwg	SHEET 1 OF 2	DATE/REVISIONS: 08/09/16-CLIENT REVIEW
FIELD BOOK/PAGE: 14452-01, PG. 04-19	DRAWING NO.: C-0005	DRAWN BY: DJC	CHECKED BY: DJC