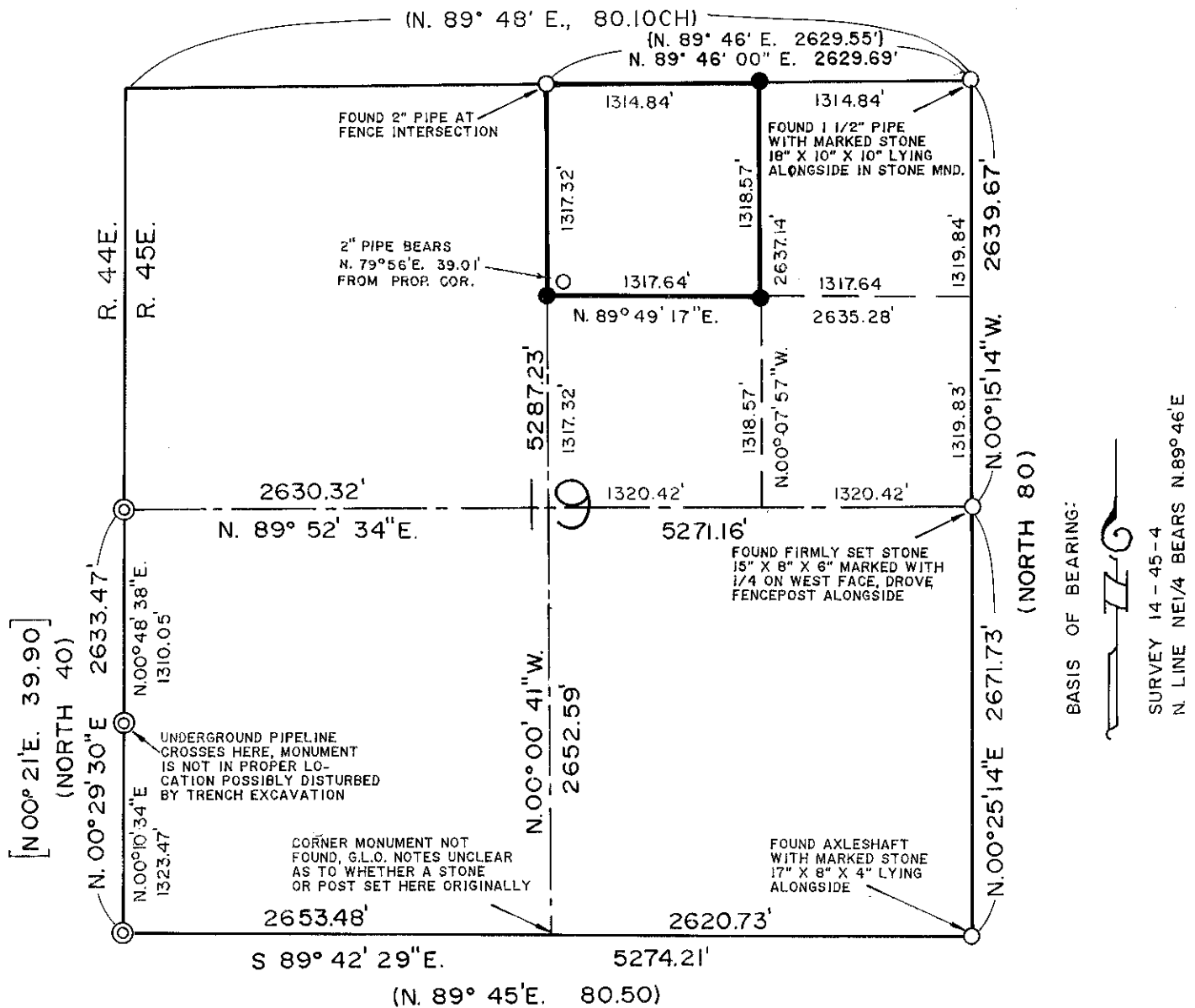


Section 19, T. 14S., R. 45E. W. M.



NARRATIVE

The purpose of this survey as requested by Donna Rush for the City of Huntington was to mark on the ground the corners of the Huntington Cemetery Property. This land being described as the NW1/4NE1/4 Section 19 in Deed 67 17 037. At the South 1/4 corner Section 19, location no stones of significant size nor wooden post remains were recovered. After a diligent search this corner was declared lost. Single proportionate method was employed to determine corner location. No monumentation was re-established at this point. Existing monumentation was recovered at all other controlling corner locations. The section was subsequently subdivided according to standard practices and the BLM manual, and new monumentation established at the property corners as shown hereon.

LEGEND

- Found monument as noted
- ⊙ Found 3 1/2" BLM Brass cap monument
- Set 5/8"x 30" rebar with plastic cap marked "HANLEY ENGR. PLS 1206"
- Property line
- () G.L.O. Data, Gradon 1882
- [] B.L.M. Data, Survey 14-45-9
- { } L.G. Burnap, Idaho Power Data Survey 14-45-4

MAP OF SURVEY

FOR
CITY OF HUNTINGTON
 Surveyed Nov. 2, 1993
 Scale 1" = 1000'

**REGISTERED
 PROFESSIONAL
 LAND SURVEYOR**

James D. Hanley
OREGON
 SEPTEMBER 23, 1977
JAMES D. HANLEY
 1206

RENEWAL DATE JANUARY 1, 1994

FILED Dec 9, 1993

BAKER COUNTY SURVEYOR

SURVEY NO. 14-45-13

HANLEY ENGINEERING
 2043 MAIN STREET
 BAKER CITY, OREGON