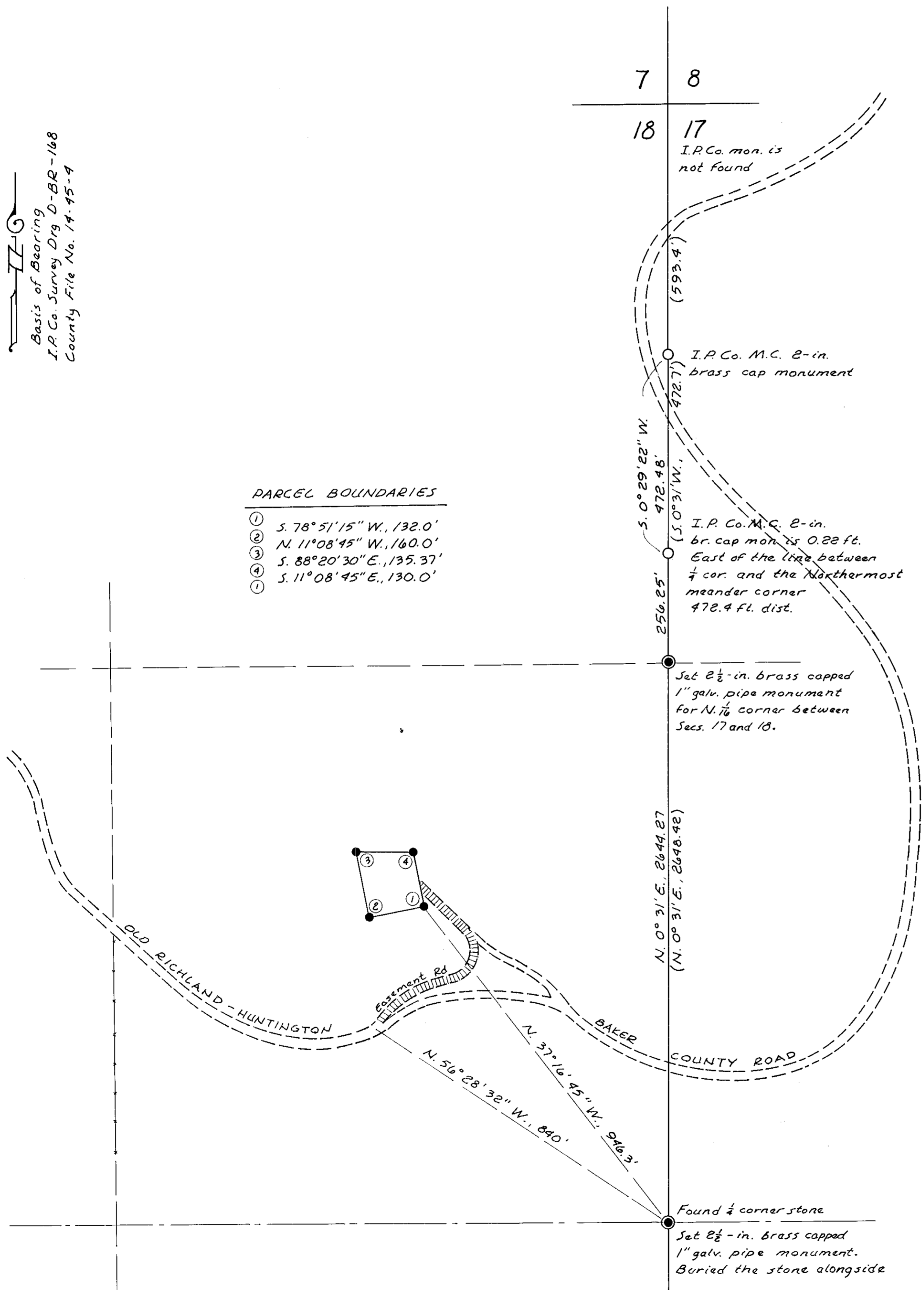


Basis of Bearing
 I.P.Co. Survey Drg D-BR-168
 County File No. 14-45-4



PARCEL BOUNDARIES

- ① S. 78° 51' 15" W., 132.0'
- ② N. 11° 08' 45" W., 160.0'
- ③ S. 88° 20' 30" E., 135.37'
- ④ S. 11° 08' 45" E., 130.0'

7 8
18 17

I.P.Co. mon. is not found

I.P.Co. M.C. 2-in. brass cap monument

S. 0° 29' 22" W. 472.48'

I.P.Co. M.C. 2-in. br. cap mon. is 0.22 ft. East of the line between 1/4 cor. and the Northernmost meander corner 472.4 ft. dist.

Set 2 1/2-in. Brass capped 1" galv. pipe monument for N. 1/4 corner between Secs. 17 and 18.

N. 0° 31' E., 2644.27' (N. 0° 31' E., 2648.42')

Found 1/4 corner stone
Set 2 1/2-in. Brass capped 1" galv. pipe monument. Buried the stone alongside

REFERENCE

Idaho Power Company Drawing No. D-BR-168
Baker County File No. 14-45-4

NARRATIVE

The purpose of this survey is to identify the parcel shown hereon by monumentation on the ground and by description for segregation from the total farm tract. Idaho Power Co. meander corner monuments were used as reference for position of the obliterated NE corner of Section 18. The found stone marking the East quarter corner of the section was deposited one foot South of the standard Baker County monument set this survey.

LEGEND

- Found Idaho Power Co. Meander Corners
- Set 3/8" x 30" rebar with plastic caps marked "PLS 1206 HANLEY ENGRG."
- Set standard Baker County brass cap monuments
- () I.P.Co. bearing and distances
- ▤ Road Easement

MAP OF SURVEY

A PARCEL IN THE SE 1/4 NE 1/4 of SECTION 18, T.14S., R.45E., W.M.

For Joe and Ruth Barber
Dec. 11, 1987 Scale 1" = 200'

FILED Dec. 29, 1987
BAKER COUNTY SURVEYOR
SURVEY NO. 14-45-10

REGISTERED PROFESSIONAL LAND SURVEYOR

James D. Hanley
OREGON
SEPTEMBER 23, 1977
JAMES D. HANLEY
1206