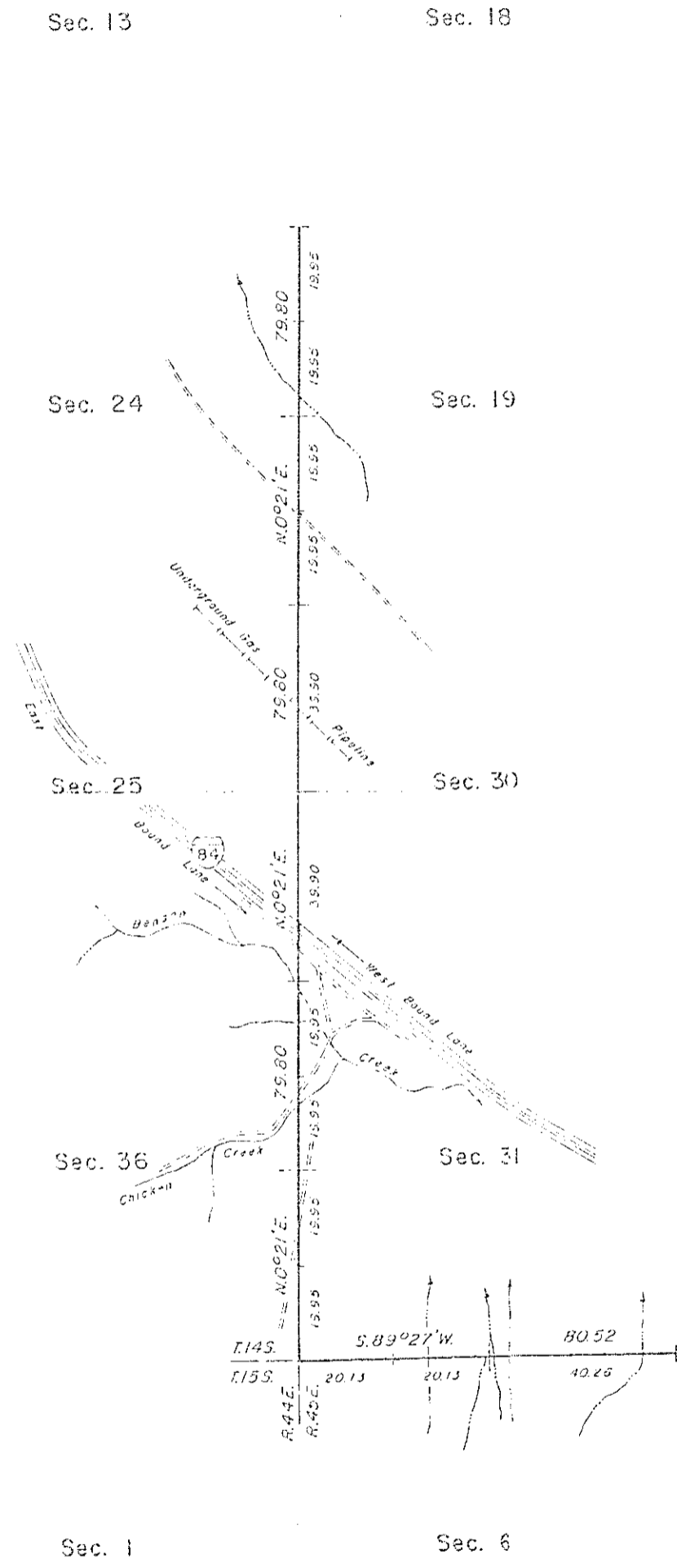


TOWNSHIP 14 SOUTH, RANGE 45 EAST, OF THE WILLAMETTE MERIDIAN, OREGON.

DEPENDENT RESURVEY



Mean magnetic declination 20° East



UNITED STATES DEPARTMENT OF THE INTERIOR
BUREAU OF LAND MANAGEMENT
Portland, Oregon August 20, 1982

This plat is strictly conformable to the approved field notes, and the survey, having been correctly executed in accordance with the requirements of law and the regulations of this Bureau, is hereby accepted.

For the Director

William W. Glenn

Chief Cadastral Surveyor of Oregon

FILED Jun 5, 1983
BAKER COUNTY SURVEYOR
SURVEY NO. 14-45-9

