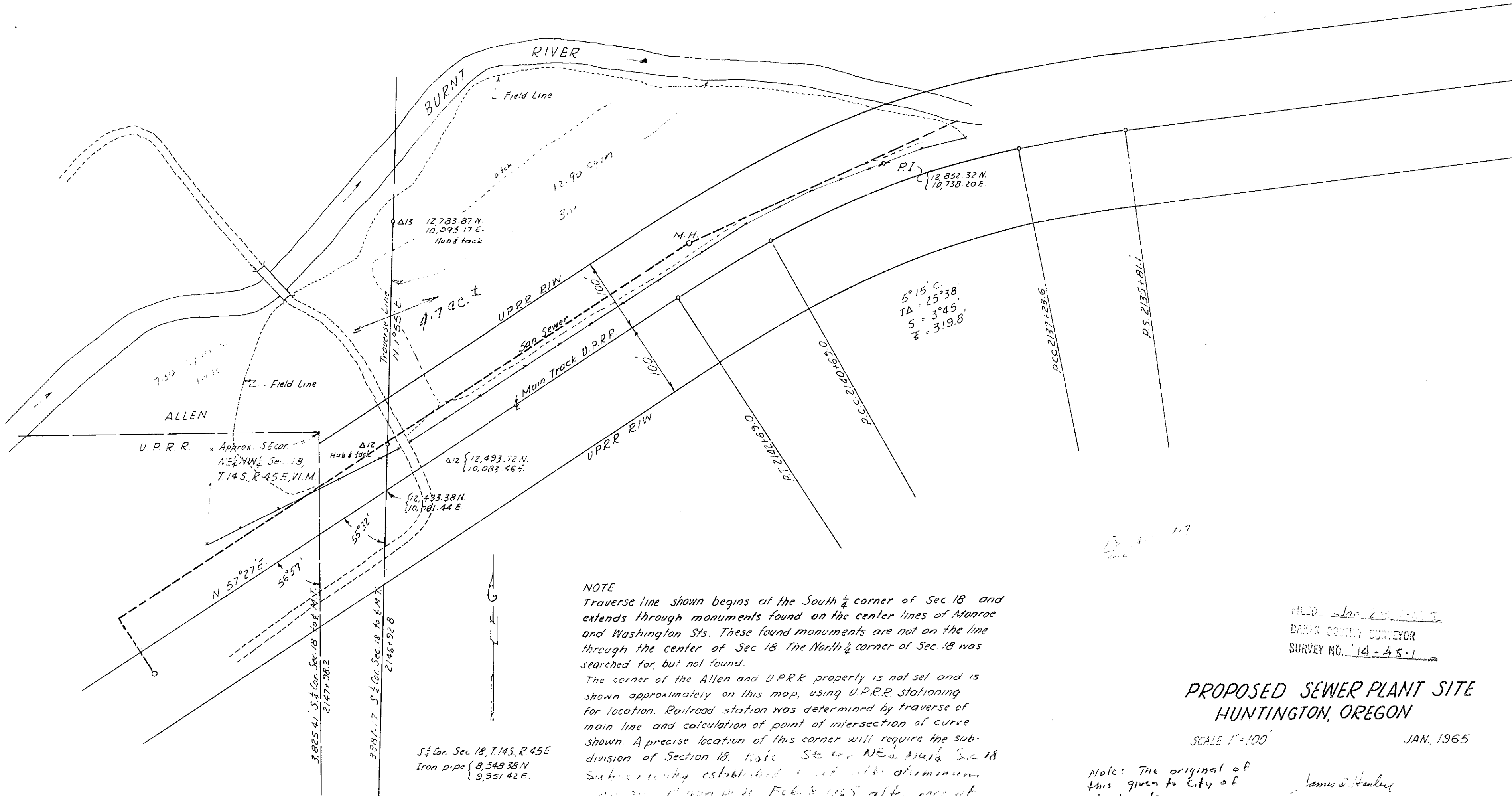


1115
1207



NOTE
 Traverse line shown begins at the South 1/4 corner of Sec. 18 and extends through monuments found on the center lines of Monroe and Washington Sts. These found monuments are not on the line through the center of Sec. 18. The North 1/4 corner of Sec. 18 was searched for, but not found.
 The corner of the Allen and U.P.R.R. property is not set and is shown approximately on this map, using U.P.R.R. stationing for location. Railroad station was determined by traverse of main line and calculation of point of intersection of curve shown. A precise location of this corner will require the subdivision of Section 18. Note SE cor NE 1/4 NW 1/4 Sec 18 Subsequently established with aluminum cap on iron pipe Feb 8, 1965 after receipt of Sec 18 subdivision by L&N. Inc.

S 1/4 Cor. Sec 18, T.14S, R.45E
 Iron pipe { 8,548.38 N.
 { 9,951.42 E.

FILED Jan 22 1965
 BAKER COUNTY SURVEYOR
 SURVEY NO. 14-45-1

**PROPOSED SEWER PLANT SITE
 HUNTINGTON, OREGON**

SCALE 1"=100' JAN, 1965

Note: The original of this given to City of Huntington.

James S. Stanley