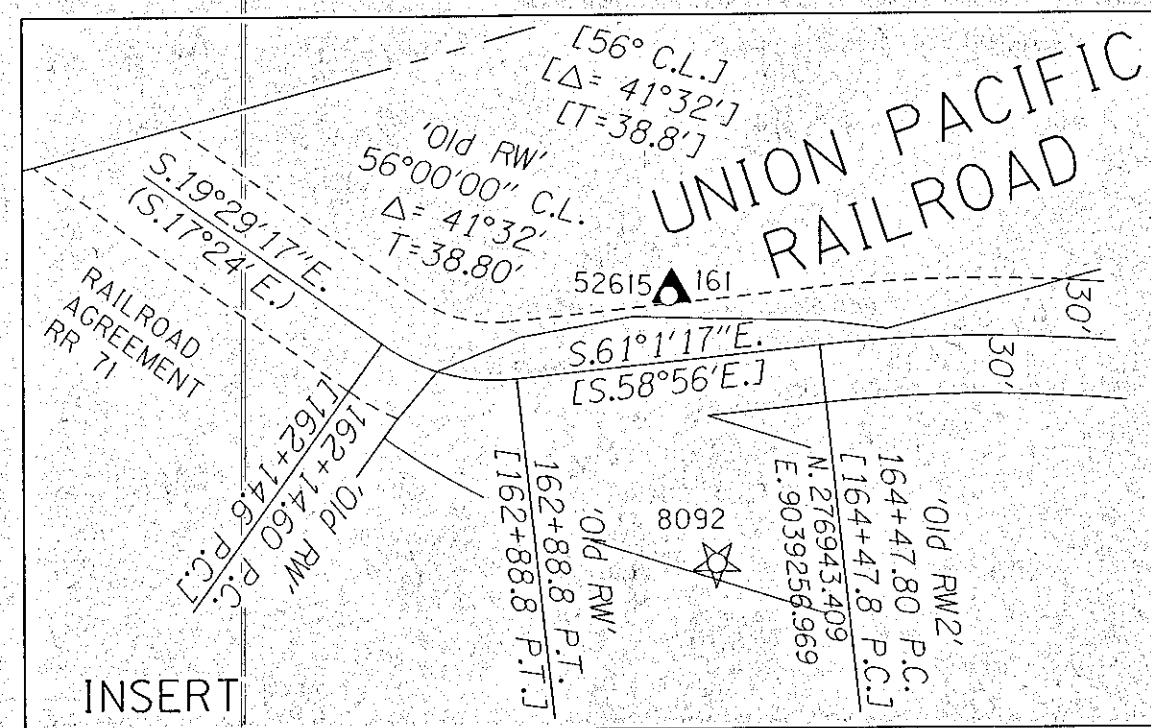


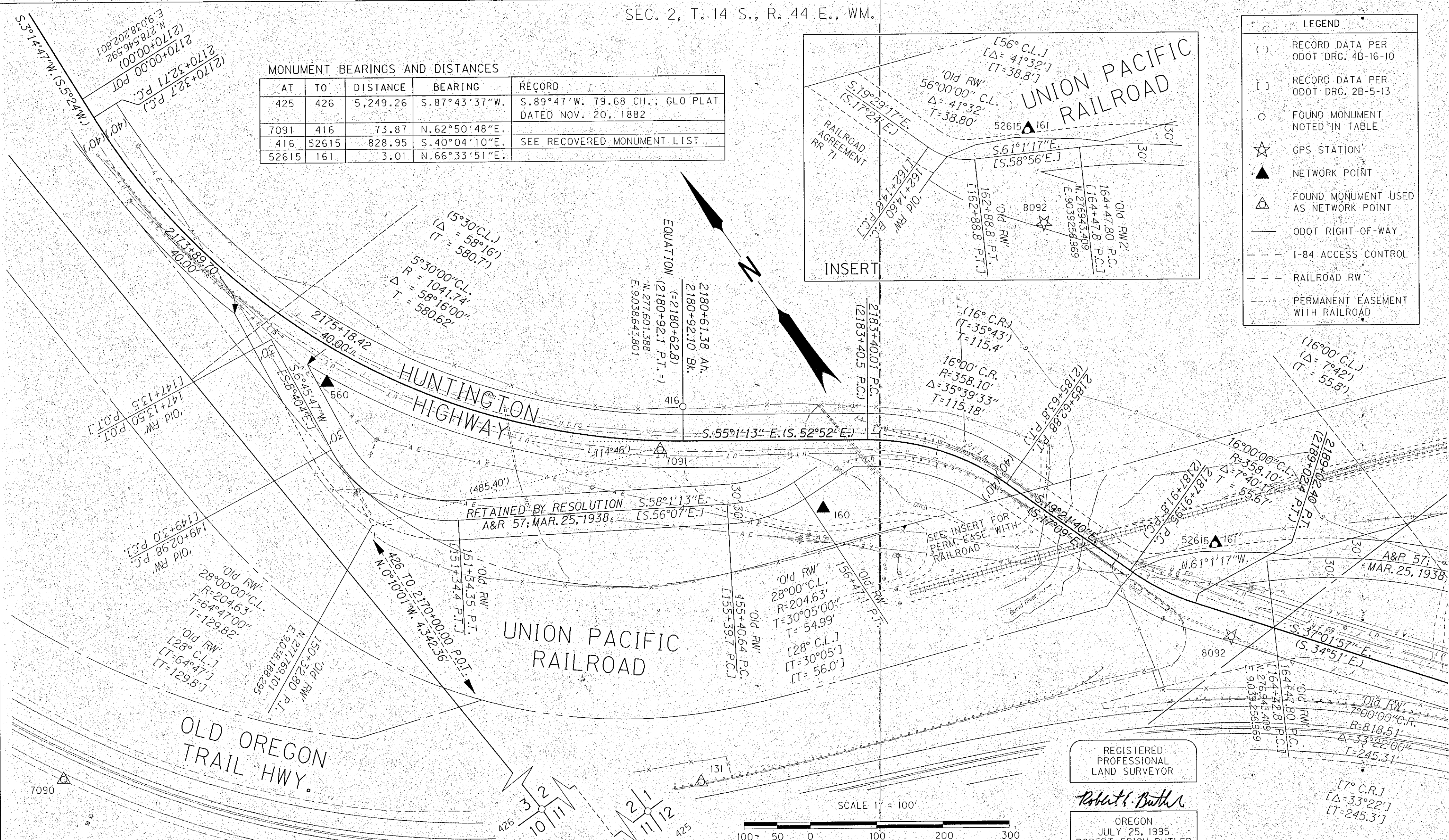
MONUMENT BEARINGS AND DISTANCES

AT	TO	DISTANCE	BEARING	RECORD
425	426	5,249.26	S. 87° 43' 37" W.	S. 89° 47' W. 79.68 CH.; CLO PLAT DATED NOV. 20, 1882
7091	416	73.87	N. 62° 50' 48" E.	
416	52615	828.95	S. 40° 04' 10" E.	SEE RECOVERED MONUMENT LIST
52615	161	3.01	N. 66° 33' 51" E.	



LEGEND

- ( ) RECORD DATA PER ODOT DRG. 4B-16-10
- [ ] RECORD DATA PER ODOT DRG. 2B-5-13
- FOUND MONUMENT NOTED IN TABLE
- ☆ GPS STATION
- ▲ NETWORK POINT
- △ FOUND MONUMENT USED AS NETWORK POINT
- ODOT RIGHT-OF-WAY
- - - I-84 ACCESS CONTROL
- - - RAILROAD RW
- - - PERMANENT EASEMENT WITH RAILROAD



RECOVERED MONUMENT LIST

PT. NO.	LDP NORTHING	LDP EASTING	STATION	OFFSET	DATE	DESCRIPTION & REFERENCE DOCUMENTS
129	275,741.35	9,039,871.31	N/A	N/A	2/24/2010	SET HUB AND TACK
130	276,389.05	9,039,502.61	N/A	N/A	2/24/2010	SET HUB AND TACK
131	277,165.71	9,038,368.76	2181+85.80	514.66 RT.	2/06/2009	SET HUB AND TACK
160	277,396.20	9,038,757.50	2182+72.17	102.94 RT.	2/05/2009	SET 1/2" SQUARE IRON ROD 30' LONG W/ODOT ALUM. CAP MKD: ODOT, 160, 2009
161	277,010.98	9,039,210.06	2189+03.49	96.24 LT.	2/05/2009	SET 1/2" SQUARE IRON ROD 30' LONG W/ODOT ALUM. CAP MKD: ODOT, 161, 2009
416	277,644.15	9,038,673.69	2180+92.07	52.17 LT.	2/26/2009	FD. BRASS DISC IN CONCRETE COLUMN, (2180+92.1 P.T. BK = 2180+62.8 AH, 52.15' LT.)
425	274,412.45	9,043,460.59	N/A	N/A	2/24/2010	FD. STONE: 5 GROOVES ON SOUTH 1 GROOVES ON EAST
426	274,204.25	9,038,215.46	N/A	N/A	2/24/2010	FD. STONE: 5 GROOVES ON SOUTH 2 GROOVES ON EAST
560	277,984.64	9,038,257.21	2175+56.28	48.70 RT.	2/26/2009	SET HUB AND TACK
7090	277,726.03	9,037,587.15	N/A	N/A	2/06/2009	FD. HUB AND TACK
7091	277,610.44	9,038,607.96	2180+57.99	13.70 RT.	2/09/2011	FD. 'PK' NAIL
8092	276,881.83	9,039,147.62	2189+68.99	31.38 RT.	2/26/2010	FD. MAG. NAIL IN ASPHALT; C.S. 14-44-36
52615	277,009.78	9,039,207.30	2189+02.79	93.32 LT.	4/01/2009	FD. 2 1/2" BR. DISC MKD. "STATE HIGHWAY DEPT. BM" (2189+02.4 P.T., 93.31' LT.)

REGISTERED PROFESSIONAL LAND SURVEYOR

*Robert Erich Butler*

OREGON  
JULY 25, 1995  
ROBERT ERICH BUTLER  
2733

EXPIRES: 12/31/2013

ENGLISH OREGON DEPARTMENT OF TRANSPORTATION

HORIZONTAL CONTROL, RECOVERY AND RETRACEMENT MAP  
US 30: BURNT RIVER & UPRR BRIDGE #700  
HUNTINGTON HIGHWAY  
BAKER COUNTY

FOR ODOT REGION 5  
3012 ISLAND AVENUE,  
LA GRANDE, OR 97850

JULY 17, 2012  
SCALE: 1" = 100'  
SHEET 2 OF 2

FILED Sept. 27, 2012  
BAKER COUNTY SURVEYOR  
SURVEY NO. 14-44-37