

NARRATIVE

THE PURPOSE OF THIS SURVEY IS TO RESOLVE THE LOCATION OF THE EXISTING RIGHT-OF-WAY (R/W) FOR A PORTION OF THE HUNTINGTON HIGHWAY IN THE W<sup>1</sup>/<sub>2</sub> SECTION 2, T.14 S., R. 44 E., W.M, BAKER COUNTY, OREGON. FOR THIS SURVEY, WE ESTABLISHED A CONTROL NETWORK AND RECOVERED THE POSITION OF HIGHWAY MONUMENTS (MONS) IN THE AREA AS PART OF THE US 30: BURNT RIVER & UPRR BRIDGE #700 SECTION.

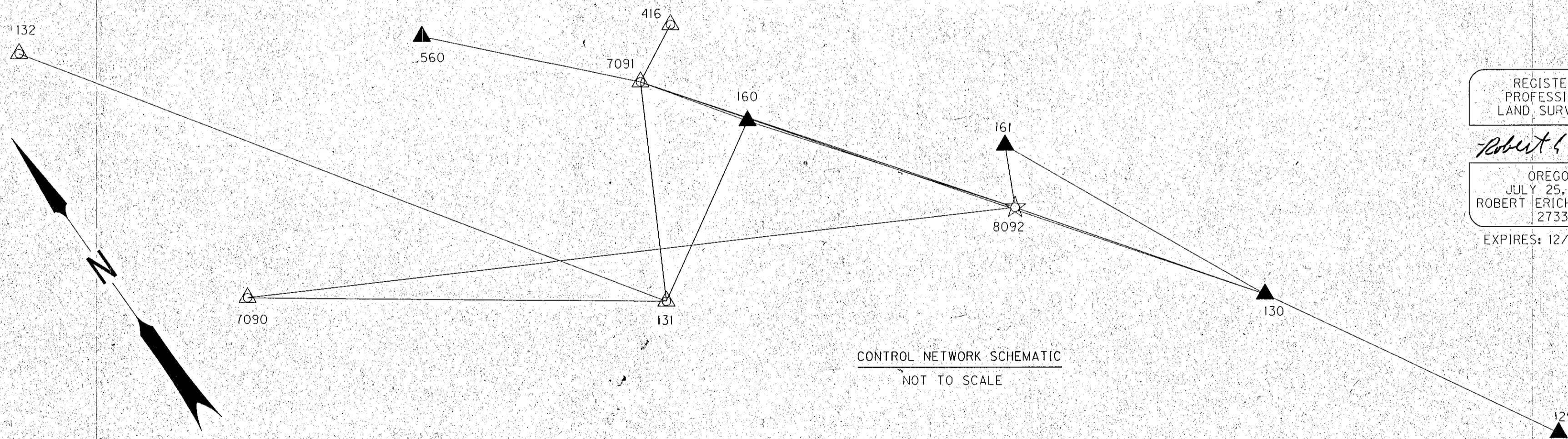
TWO MONUMENTS AS DESCRIBED BY THE OREGON DEPARTMENT OF TRANSPORTATION (ODOT) DRAWING 4B-16-10 DRAWING WERE ACCEPTED BY THIS SURVEY TO DEFINE THE EXISTING CENTER LINE ALIGNMENT. THE BRASS DISCS 416 (STA 2180+62.8, OFFSET 52.15) AND 62615 (STA 2189+02.4, OFFSET 93.31) WERE USED AS FIXED POINTS. THEIR POSITIONS WERE CONFIRMED BY COMPARING THE RECORD DATA VERSUS THE MEASURED DATA. THE LOCATION OF THE PI'S WERE ESTABLISHED USING RECORD TANGENT LENGTHS AND DELTA ANGLES. IT WAS ASSUMED THAT THE ORIGINAL ANGLES AND DISTANCES WERE MEASURED WITH EQUAL PRECISION, AND THE LOCATION OF THE PI'S WERE THEN ADJUSTED BY "COMPASS RULE". THE RECORD DEGREE OF CURVES FROM SAID DRAWING WERE USED TO ESTABLISH THE CURVE DATA AND STATIONING.

THE BASIS OF BEARING IS FROM THE OREGON COORDINATE SYSTEM OF 1983(98), NORTH ZONE AS DESCRIBED BY BAKER COUNTY SURVEY 14-44-36. THIS SURVEY UTILIZES A LOCAL DATUM PLANE (LDP) WHICH IS RELATIVE TO THE OREGON COORDINATE SYSTEM (OCS) OF 1983(98), NORTH ZONE, WITH RESPECT TO THE LOCAL LATITUDE AND GROUND ELEVATION. THE LDP COORDINATES DEFINE TRUE GROUND DISTANCES. TO CONVERT THE LDP COORDINATES, FOR THE CONTROL POINTS, TO THE OREGON COORDINATE SYSTEM OF 1983(98), NORTH ZONE, MULTIPLY THE LDP COORDINATES BY 0.99985255.

NETWORK BEARINGS AND DISTANCES

AT	TO	DISTANCE	ANGLE
130	129	745.29	S. 29°39'01" E.
130	160	1,252.81	N. 36°29'40" W.
130	8092	607.33	N. 35°46'04" W.
130	161	687.30	N. 25°11'29" W.
130	7091	1,514.00	N. 36°13'20" W.
131	132	1,591.13	N. 34°01'22" W.
131	160	451.94	N. 59°20'06" E.
131	7090	961.71	N. 54°21'50" W.
7090	8092	1,774.19	S. 61°35'14" E.
7091	416	73.87	N. 62°50'48" E.
7091	560	512.89	N. 43°08'49" W.
7091	8092	1,774.19	S. 61°35'14" E.
7091	131	504.98	S. 28°16'25" W.
7091	160	261.27	S. 34°54'59" E.
8092	161	143.45	N. 25°48'11" E.

LEGEND	
▲	SET NETWORK POINT
☆	FOUND GPS STATION
△	FOUND MONUMENT USED AS NETWORK POINT
▲—▲	LINE OF OBSERVATION



REGISTERED PROFESSIONAL LAND SURVEYOR  
*Robert E. Butler*  
OREGON  
JULY 25, 1995  
ROBERT ERICH BUTLER  
2733  
EXPIRES: 12/31/2013

NETWORK POINT COORDINATE TABLE

PT. NO.	LDP NORTHING	LDP EASTING	DATE	DESCRIPTION
129	275,741.35	9,039,871.31	2/06/2009	FD. 1/2" SQUARE ROD W/ODOT ALUM. CAP
130	276,389.05	9,039,502.61	2/06/2009	FD. 1/2" SQUARE ROD W/ODOT ALUM. CAP
131	277,165.71	9,038,368.76	2/06/2009	FD. 1/2" SQUARE ROD W/ODOT ALUM. CAP
132	278,484.46	9,037,478.49	2/06/2009	FD. 1/2" SQUARE ROD W/ODOT ALUM. CAP
160	277,396.20	9,038,757.50	2/05/2009	SET 1/2" SQUARE IRON ROD 30" LONG W/ODOTALUM. CAP MKD: ODOT, 160, 2009
161	277,010.98	9,039,210.06	2/05/2009	SET 1/2" SQUARE IRON ROD 30" LONG W/ODOTALUM. CAP MKD: ODOT, 161, 2009
416	277,644.15	9,038,673.69	2/26/2009	FD. BRASS DISC IN CONCRETE COLUMN
560	277,984.64	9,038,257.21	2/26/2009	SET HUB AND TACK
7090	277,726.03	9,037,587.15	2/06/2009	FD. 'MAG.' NAIL
7091	277,610.44	9,038,607.96	2/09/2011	FD. 'MAG.' NAIL
8092	276,881.83	9,039,147.62	2/05/2009	FD. 'MAG.' NAIL IN ASPHALT, C.S. 14-44-36

ENGLISH OREGON DEPARTMENT OF TRANSPORTATION  
HORIZONTAL CONTROL, RECOVERY AND RETRACEMENT MAP  
US 30: BURNT RIVER & UPRR BRIDGE #700  
HUNTINGTON HIGHWAY  
BAKER COUNTY  
FOR ODOT REGION 5  
3012 ISLAND AVENUE  
LA GRANDE, OR 97850  
JULY 17, 2012  
SCALE: 1" = 100'  
SHEET 1 OF 2

REVISED Sept. 27, 2012  
BAKER COUNTY SURVEYOR  
SURVEY NO. 14-44-37