

B06 12 0294

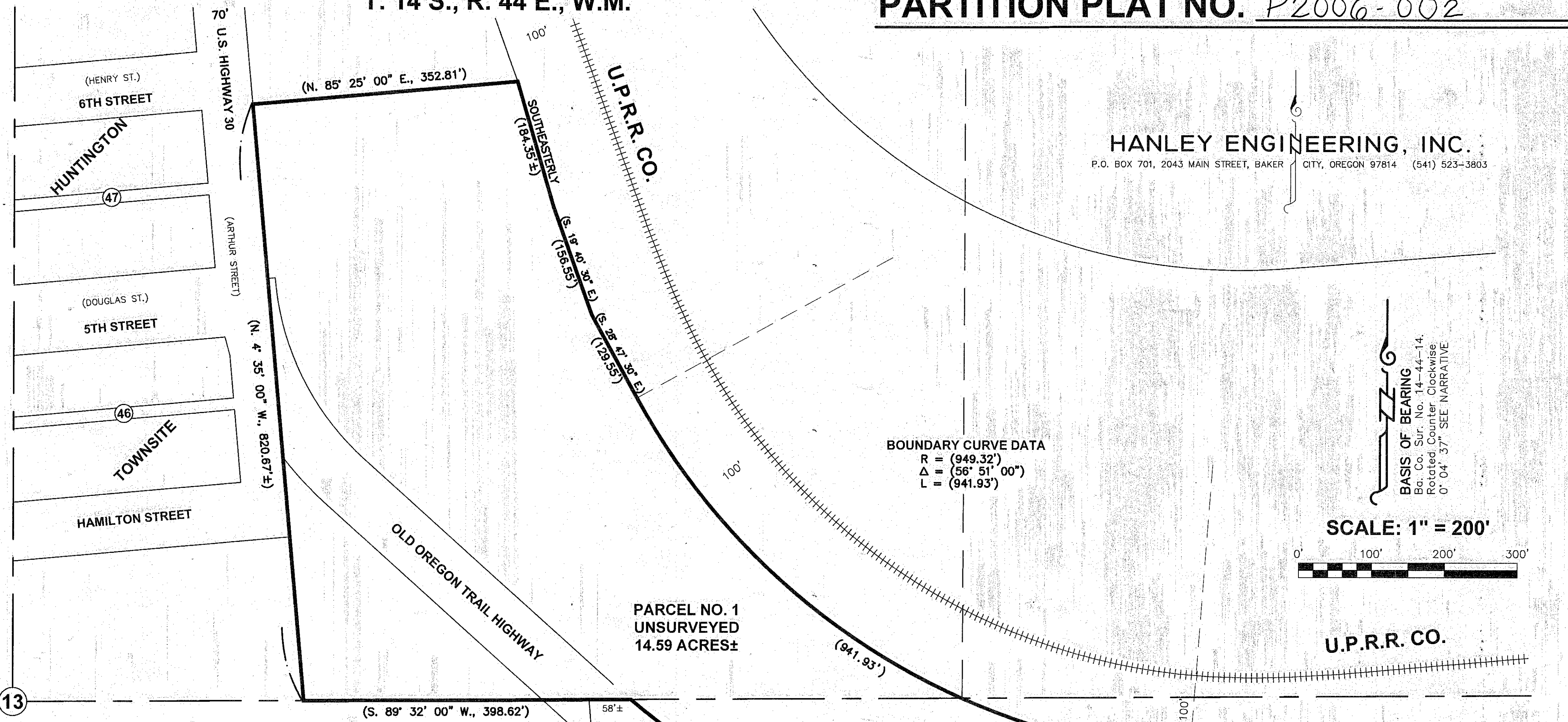
T. 14 S., R. 44 E., W.M.

B06 12 0295

PARTITION PLAT NO. P2006-002

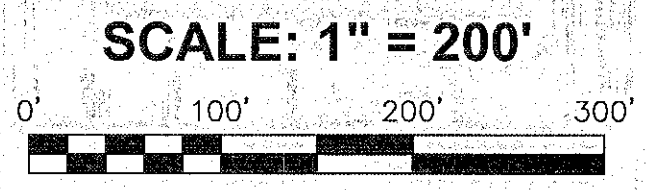
B06 12:0296

HANLEY ENGINEERING, INC.
 P.O. BOX 701, 2043 MAIN STREET, BAKER CITY, OREGON 97814 (541) 523-3803



BOUNDARY CURVE DATA
 R = (949.32')
 Δ = (56° 51' 00")
 L = (941.93')

BASIS OF BEARING
 Ba. Co. Sur. No. 14-44-14.
 Rotated Counter Clockwise
 0° 04' 37" SEE NARRATIVE



PARCEL NO. 1
 UNSURVEYED
 14.59 ACRES±

U.P.R.R. CO.

PARCEL NO. 2
 0.23 ACRES

LINE TABLE

LINE	BEARING	DISTANCE
L1	(N. 85° 14' 30" E.)	(115.00')
L2	(S. 4° 35' 00" E.)	88.10'
L3	N. 4° 35' 00" W.	87.75'
L4	(S. 85° 25' 00" W.)	115.00'
"A"- "B"	N. 85° 25' 00" E.	{2659.48}
"B"- "C"	S. 4° 35' 03" E.	{1186.34}
"C"- "D"	S. 85° 27' 12" W.	{2660.32}
"D"- "A"	N. 4° 32' 37" W.	{1184.64}

I, Thomas J. Hanley, hereby certify that this is an exact copy of the partition plat as submitted to the Baker County Clerk for recording.

Thomas J. Hanley
 Thomas J. Hanley

REGISTERED PROFESSIONAL LAND SURVEYOR
Thomas J. Hanley
OREGON
 JULY 13, 1979
THOMAS J. HANLEY
 1817

Renews June 30, 2007

LEGEND

- Set 5/8" x 30" rebar with plastic cap marked "HANLEY ENGR. PLS 1817".
- Found monument in monument box.
- Found monument as noted.
- () Record Data Per Ba. Co. Deed No. 97 11 101.
- { } Record Data Per Ba. Co. Surv. No. 14-44-14.

FILED **MARCH 24, 2006**
 BAKER COUNTY SURVEYOR
 SURVEY NO. 14-44-33MP