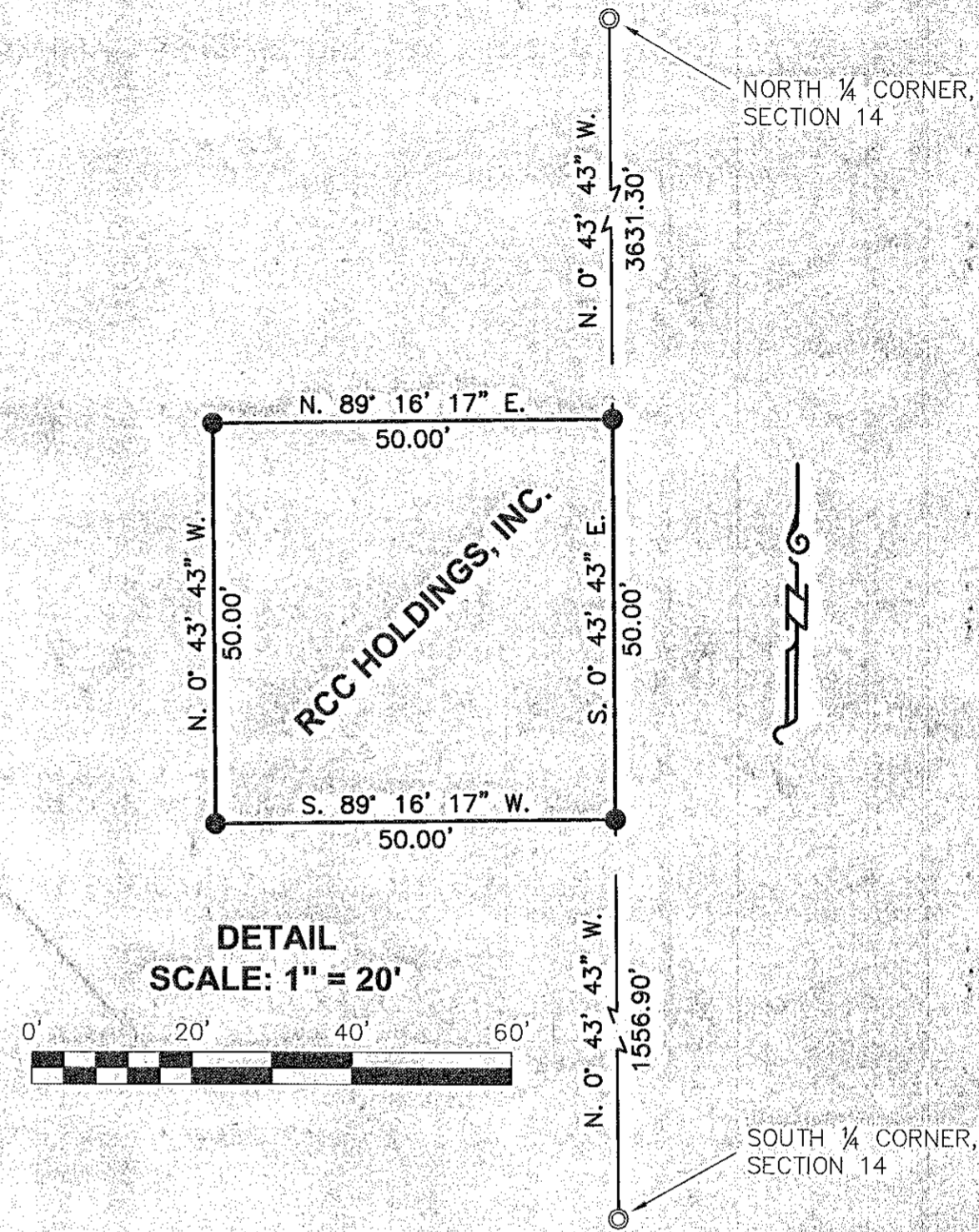


- LEGEND**
- Set 5/8" rebar with plastic cap marked "HANLEY ENGR. PLS 1817".
 - Found, monument as noted.
 - ⊙ Set 2½" Brass Cap Monument as Noted.
 - () Record GLO Data.



NARRATIVE

The purpose of this survey for RCC Holdings, Inc. is to mark on the ground with proper monumentation the corners of a 50' x 50' parcel leased for a telecommunications site. Original GLO monumentation for the North and South quarter corners of Section 14, and a 1½" pipe marking the Southeast corner of Section 14 were recovered and held as the basis of bearing as shown hereon.

MAP OF SURVEY
SECTION 14,
T. 14 S., R. 44 E., W.M.,
BAKER COUNTY, OREGON
HUNTINGTON SITE

Surveyed June 16 thru August 25, 2004
for RCC Holdings, Inc.
Scales as shown

HANLEY ENGINEERING, INC.
 P.O. BOX 701, 2043 MAIN STREET, BAKER CITY, OREGON 97814 (541) 523-3803

FILED September 7, 2004
 BAKER COUNTY SURVEYOR
 SURVEY NO. 14-44-32

REGISTERED PROFESSIONAL LAND SURVEYOR
Thomas J. Hanley
OREGON
 JULY 13, 1979
THOMAS J. HANLEY
 1817

Renews June 30, 2005