

# NARRATIVE

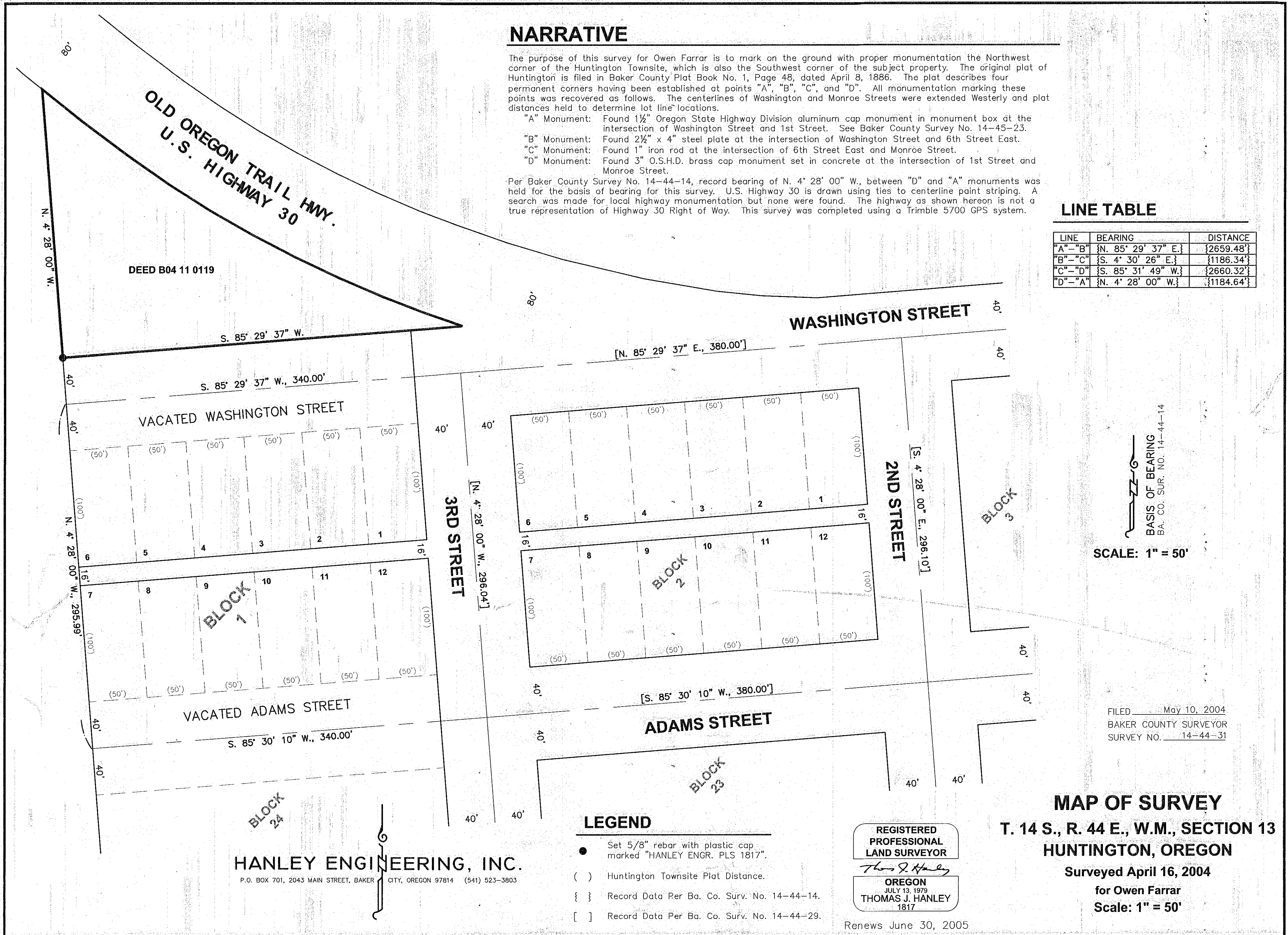
The purpose of this survey for Owen Farrar is to mark on the ground with proper monumentation the Northwest corner of the Huntington Townsite, which is also the Southwest corner of the subject property. The original plat of Huntington is filed in Baker County Plat Book No. 1, Page 48, dated April 8, 1886. The plat describes four permanent corners having been established at points "A", "B", "C", and "D". All monumentation marking these points was recovered as follows. The centerlines of Washington and Monroe Streets were extended Westerly and plat distances held to determine lot line locations.

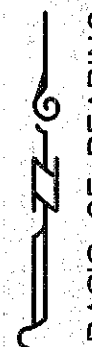
- "A" Monument: Found 1½" Oregon State Highway Division aluminum cap monument in monument box at the intersection of Washington Street and 1st Street. See Baker County Survey No. 14-45-23.
- "B" Monument: Found 2½" x 4" steel plate at the intersection of Washington Street and 6th Street East.
- "C" Monument: Found 1" iron rod at the intersection of 6th Street East and Monroe Street.
- "D" Monument: Found 3" O.S.H.D. brass cap monument set in concrete at the intersection of 1st Street and Monroe Street.

Per Baker County Survey No. 14-44-14, record bearing of N. 4° 28' 00" W., between "D" and "A" monuments was held for the basis of bearing for this survey. U.S. Highway 30 is drawn using ties to centerline paint striping. A search was made for local highway monumentation but none were found. The highway as shown hereon is not a true representation of Highway 30 Right of Way. This survey was completed using a Trimble 5700 GPS system.

# LINE TABLE

LINE	BEARING	DISTANCE
"A"-"B"	{N. 85° 29' 37" E.}	{2659.48}
"B"-"C"	{S. 4° 30' 26" E.}	{1186.34}
"C"-"D"	{S. 85° 31' 49" W.}	{2660.32}
"D"-"A"	{N. 4° 28' 00" W.}	{1184.64}



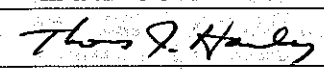
  
 BASIS OF BEARING  
 BA. CO. SUR. NO. 14-44-14  
 SCALE: 1" = 50'

FILED May 10, 2004  
 BAKER COUNTY SURVEYOR  
 SURVEY NO. 14-44-31

**MAP OF SURVEY**  
**T. 14 S., R. 44 E., W.M., SECTION 13**  
**HUNTINGTON, OREGON**  
 Surveyed April 16, 2004  
 for Owen Farrar  
 Scale: 1" = 50'

**HANLEY ENGINEERING, INC.**  
 P.O. BOX 701, 2043 MAIN STREET, BAKER CITY, OREGON 97814 (541) 523-3803

- ### LEGEND
- Set 5/8" rebar with plastic cap marked "HANLEY ENGR. PLS 1817".
  - ( ) Huntington Townsite Plat Distance.
  - { } Record Data Per Ba. Co. Surv. No. 14-44-14.
  - [ ] Record Data Per Ba. Co. Surv. No. 14-44-29.

REGISTERED  
 PROFESSIONAL  
 LAND SURVEYOR  
  
 OREGON  
 JULY 13, 1979  
 THOMAS J. HANLEY  
 1817

Renews June 30, 2005