

CERTIFIED RECORD OF LAND CORNER MONUMENTATION

History of original corner establishment:

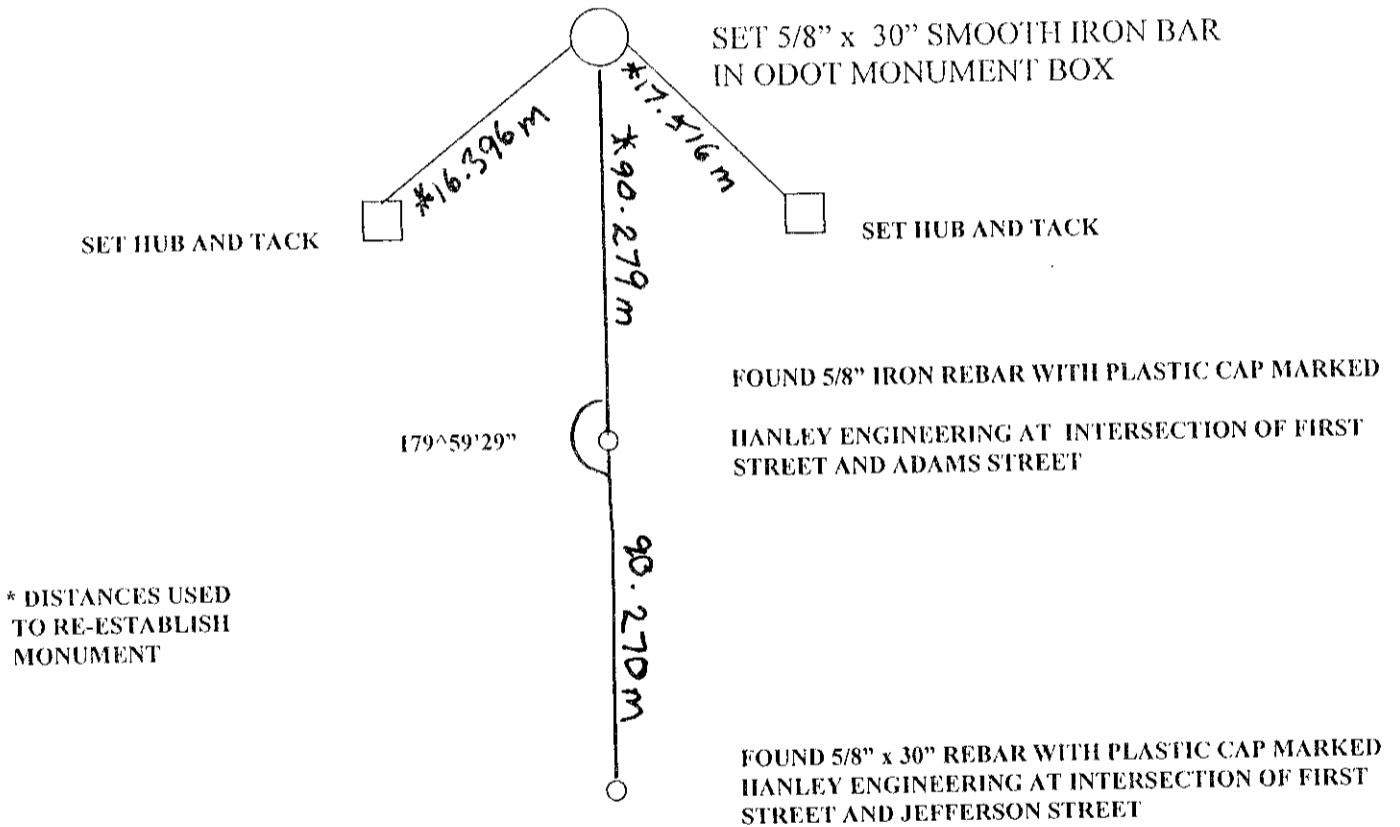
ORIGINAL MONUMENT DESCRIBED AS PERMANENT CORNER 'A' BY PLAT BOOK 1, PAGE 48, DATED APRIL 8, 1886 FOR THE TOWN OF HUNTINGTON, OREGON. BAKER COUNTY SURVEYS 14-44-14, 14-44-20, 14-44-21 AND 14-44-25 DESCRIBE THE MONUMENT AS A 5/8" REBAR FLUSH IN ROAD CENTERLINE AND SHOW IT LOCATED IN THE INTERSECTION OF FIRST STREET AND WASHINGTON STREET.

Description of corner evidence found:

FOUND 5/8" DIAMETER REBAR IN THE INTERSECTION OF FIRST STREET AND WASHINGTON STREET IN HUNTINGTON OREGON.

Description of monument and accessories established to perpetuate the original location of this corner:

SET REFERENCES TO PERPETUATE MONUMENT DURING CONSTRUCTION AS DESCRIBED IN SKETCH BELOW. FOUND MONUMENT AFTER CONSTRUCTION TO BE BENT, AND REPLACED MONUMENT WITH 5/8" x 30" SMOOTH IRON ROD WITH ODOT ALUM CAP. SET IRON ROD AND ALUMINUM CAP IN ODOT MONUMENT BOX.



REGISTERED  
PROFESSIONAL  
LAND SURVEYOR

*Robert E. Butler*

OREGON  
JULY 25, 1995  
ROBERT E. BUTLER  
2733

FILED DECEMBER 17, 2002  
BAKER COUNTY SURVEYOR  
SURVEY NO. 14-45-23  
14-44-28

Expires 12/31/2003

Office of ..... County of .....

State of ..... I hereby certify that the within instrument was filed in this office for record on the

..... day of ..... 19.....

..... by .....  
(County Official) (Deputy)