

"D" 2-1/2" BRASS CAP IN CONCRETE

Scale: 1" = 100'

### LEGEND

- - SET 5/8" x 30" REBAR WITH YELLOW PLASTIC CAP MKD. "HANLEY ENGRG. PLS 1206."
- - FOUND 5/8" x 30" REBAR WITH YELLOW PLASTIC CAP MKD. "HANLEY ENGRG. PLS. 1206."
- ⊙ - FOUND MONUMENT AS NOTED
- ( ) - PLAT DISTANCE

### REFERENCE SURVEYS:

- CO. SURVEY NO. 14-44-14
- CO. SURVEY NO. 14-44-16

### NARRATIVE

OUR ASSIGNMENT IS TO SURVEY BLOCK 7 HUNTINGTON TOWNSITE FOR CITY OF HUNTINGTON, ORDERED BY DONNA RUSH, CITY RECORDER.  
 THE INTERSECTIONS OF THE 4 STREETS AROUND BLOCK 7 HAVE BEEN PREVIOUSLY COMPUTED FROM ADJACENT WORK BY THIS FIRM. I FIND NO RECORDED MAP OF SURVEY IN THIS BLOCK. HOWEVER THE COUNTY TAX MAP CONTAINS INFORMATION THAT COULD ONLY BE OBTAINED FROM A SURVEY SHOWING THE ORIGINAL OLD OREGON TRAIL HIGHWAY AND THE RELOCATED CURVE IN THIS BLOCK. I HAVE USED THE DATA ON THE TAX MAP. A BEARING EQUATION IS MADE TO CONFORM THE RELATIONSHIP. BEARING OF 2nd STREET E.: N. 04° 35' W. TAX MAP AND THE RECORD BEARING N. 04° 28' 57" W. YIELDS 0° 06' 03" ROTATION. THE INTERIOR ANGLE OF 48° 50' (TAX MAP N. 04° 35' W. AND SOUTH LINE OF U.S. HIGHWAY = S. 53° 25' E.) RETURNS A BEARING OF S. 53° 18' 57" E. FOR OUR HIGHWAY BEARING USED IN THESE CALCULATIONS. THE DISTANCE OF 47.0 FEET ALONG WEST LINE OF LOT 6 AND SOUTH LINE = 53.7 FEET IS EXTENDED TO ALLOW CALCULATIONS OF REMAINDER OF LINES IN THIS BLOCK.

### MAP OF SURVEY

SURVEY IN BLOCK 7  
 HUNTINGTON TOWNSITE,  
 IN HUNTINGTON, OREGON

Surveyed June 24, 1996

Scales as shown.

FILED 8-01-1996

BAKER COUNTY SURVEYOR  
 SURVEY NO. 14-44-20

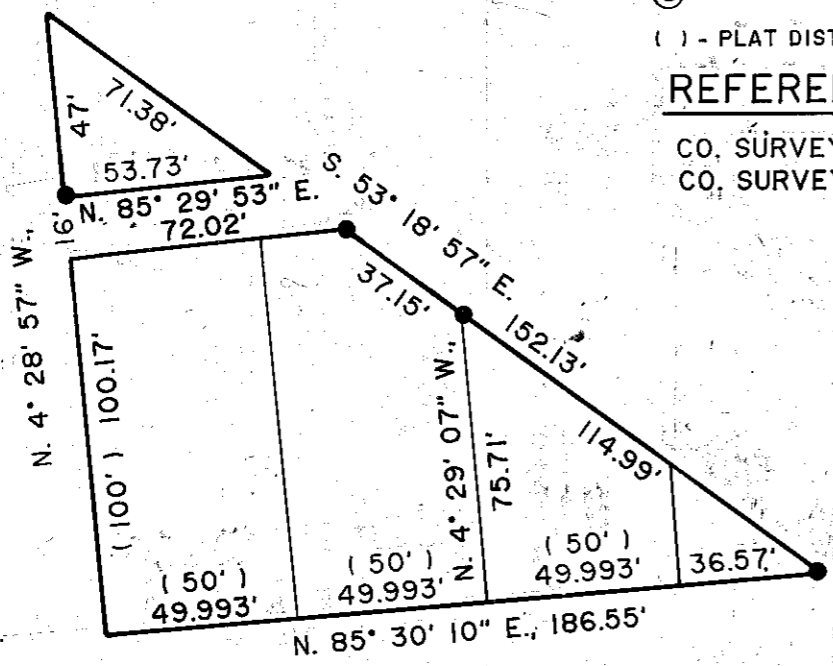
HANLEY ENGINEERING  
 2043 MAIN STREET  
 BAKER CITY, OREGON

REGISTERED  
 PROFESSIONAL  
 LAND SURVEYOR

*James D. Hanley*

OREGON  
 SEPTEMBER 23, 1977  
 JAMES D. HANLEY  
 1206

RENEWS JUNE 30, 1997



ZZG