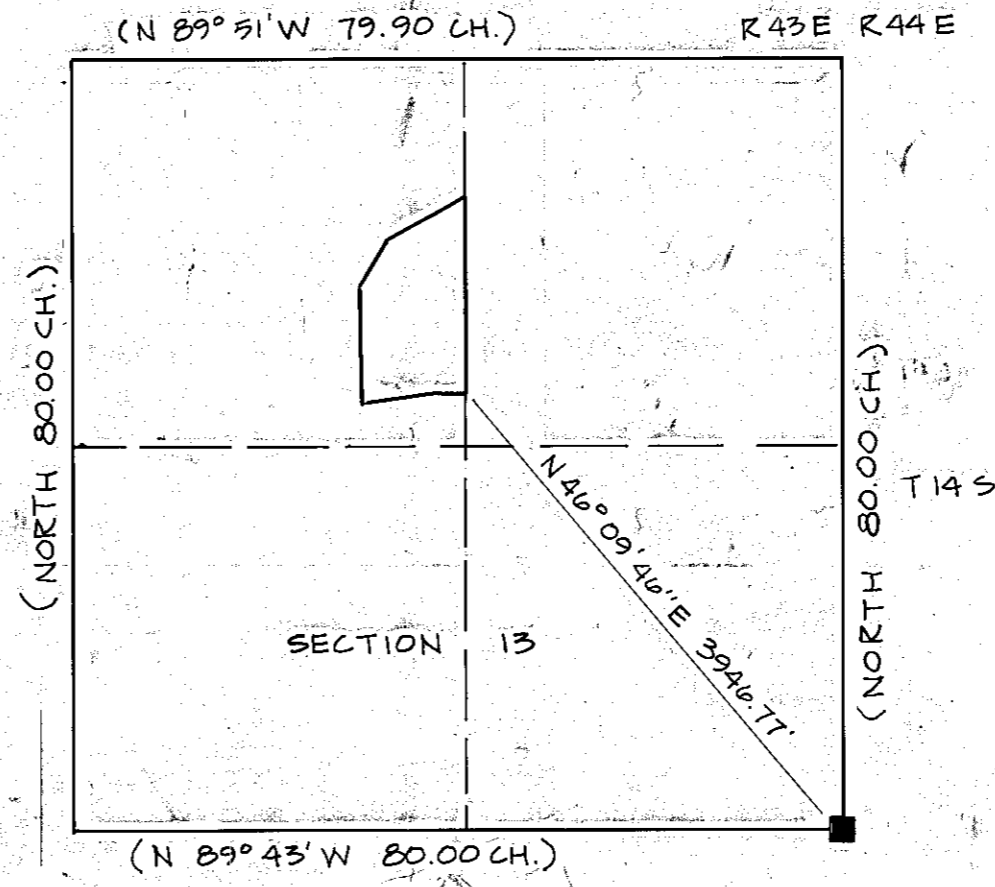


17.15
ACRES



NOT TO SCALE

LEGEND

- SET 5/8" x 30" REBAR
- x— FENCE
- () RECORD DISTANCE

BASIS OF BEARING

EAST FENCE LINE
BEING NORTH

REFERENCE MATERIAL

G.L.O. PLATS & NOTES.
COUNTY ASSESSOR'S MAP.
FIELD BOOK 1.

NOTE: THE EAST FENCE LINE IS
CONSIDERED THE PROPERTY
LINE BY THE PROPERTY OWNERS

**REGISTERED
PROFESSIONAL
LAND SURVEYOR**

Barry B. Barbour

OREGON
OCT. 17, 1975
BARRY B. BARBOUR
1051

FILED Jan 9, 1979
BAKER COUNTY SURVEYOR
SURVEY NO. 14-43-1

FOUND 8" x 12" x 12"
BASALT STONE FIRMLY
SET W/ 3 NOTCHES ON
SOUTH SIDE.

| | |
|---|--|
| SURVEY OF A PORTION OF THE NW 1/4 SECTION 13, T14S, R43E, W.M. BAKER COUNTY, OREGON | |
| FOR KIETH Mc DANIEL | |
| SCALE: 1" = 200' | SHEET NO. 1 |
| DATE DEC., 1978 | BARRY B. BARBOUR LAND SURVEYOR |

14-43-1