

SURVEY FOR  
OREGON DEPARTMENT OF TRANSPORTATION  
**UNITY FOREST WAYSIDE -  
IRONSIDE SEC.**  
JOHN DAY HIGHWAY  
BAKER & MALHEUR COUNTIES

SHEET  
No. **5**  
TOTAL  
SHEETS **16**

T. 14 S., R. 38 E., W.M.  
Portion of 9B-36-21

SEC. 20  
SEC. 29

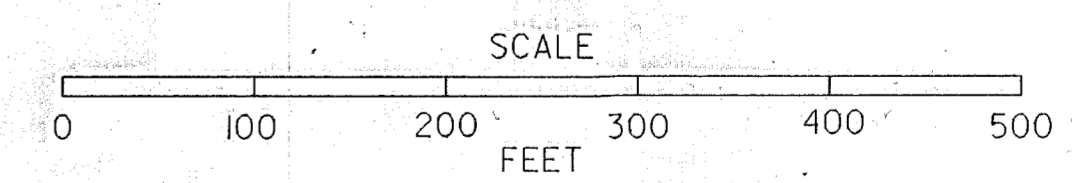
20 21  
29 28

MONUMENT TABLE (LEFT SIDE)

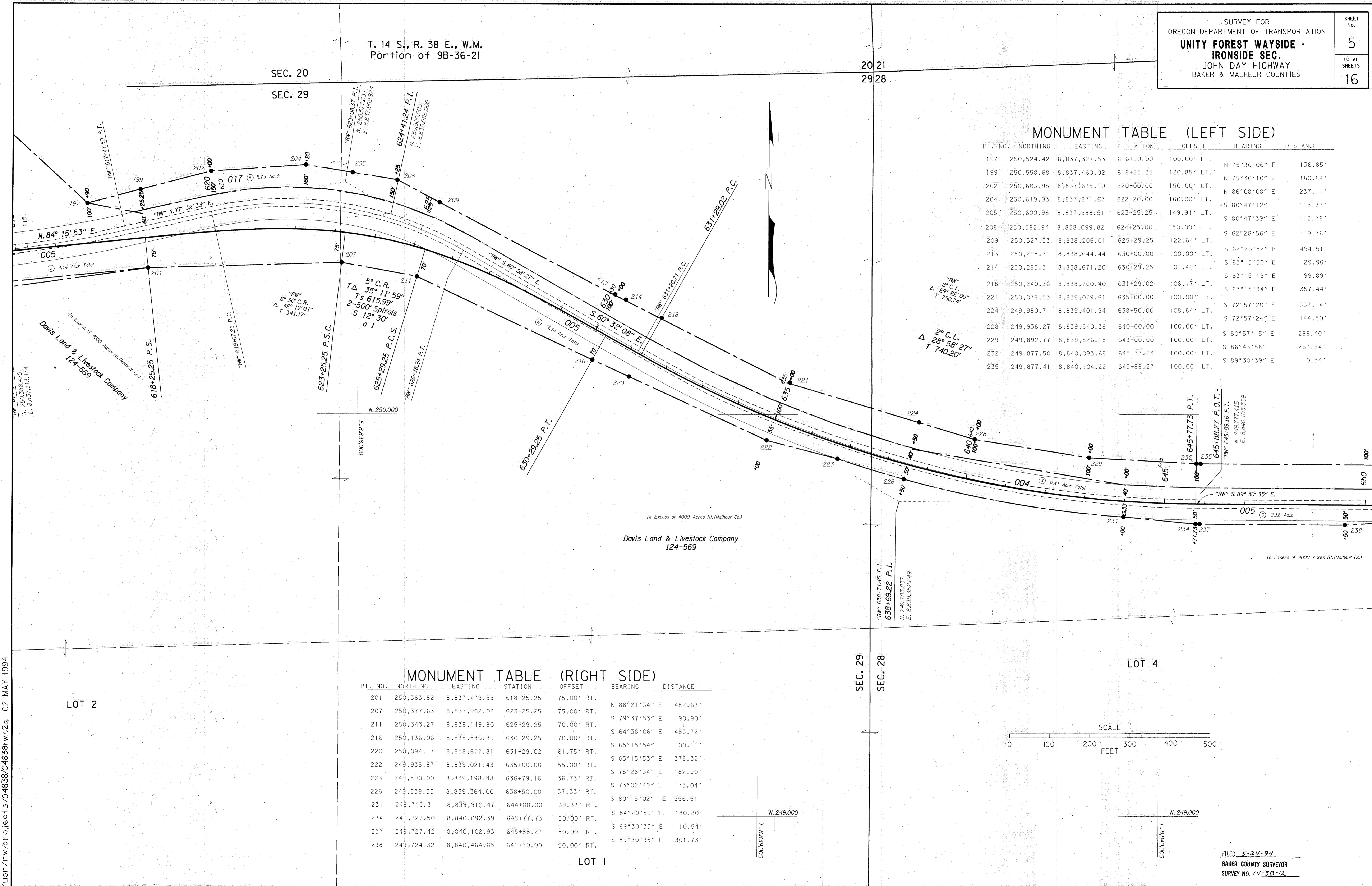
PT. NO.	NORTHING	EASTING	STATION	OFFSET	BEARING	DISTANCE
197	250,524.42	8,837,327.53	616+90.00	100.00' LT.	N 75°30'06" E	136.85'
199	250,558.68	8,837,460.02	618+25.25	120.85' LT.	N 75°30'10" E	180.84'
202	250,603.95	8,837,635.10	620+00.00	150.00' LT.	N 86°08'08" E	237.11'
204	250,619.93	8,837,871.67	622+20.00	160.00' LT.	S 80°47'12" E	118.37'
205	250,600.98	8,837,988.51	623+25.25	149.91' LT.	S 80°47'39" E	112.76'
208	250,582.94	8,838,099.82	624+25.00	150.00' LT.	S 62°26'56" E	119.76'
209	250,527.53	8,838,206.01	625+29.25	122.64' LT.	S 62°26'52" E	494.51'
213	250,298.79	8,838,644.44	630+00.00	100.00' LT.	S 63°15'50" E	29.96'
214	250,285.31	8,838,671.20	630+29.25	101.42' LT.	S 63°15'19" E	99.89'
218	250,240.36	8,838,760.40	631+29.02	106.17' LT.	S 63°15'34" E	357.44'
221	250,079.53	8,839,079.61	635+00.00	100.00' LT.	S 72°57'20" E	337.14'
224	249,980.71	8,839,401.94	638+50.00	108.84' LT.	S 72°57'24" E	144.80'
228	249,938.27	8,839,540.38	640+00.00	100.00' LT.	S 80°57'15" E	289.40'
229	249,892.77	8,839,826.18	643+00.00	100.00' LT.	S 86°43'58" E	267.94'
232	249,877.50	8,840,093.68	645+77.73	100.00' LT.	S 89°30'39" E	10.54'
235	249,877.41	8,840,104.22	645+88.27	100.00' LT.		

MONUMENT TABLE (RIGHT SIDE)

PT. NO.	NORTHING	EASTING	STATION	OFFSET	BEARING	DISTANCE
201	250,363.82	8,837,479.59	618+25.25	75.00' RT.	N 88°21'34" E	482.63'
207	250,377.63	8,837,962.02	623+25.25	75.00' RT.	S 79°37'53" E	190.90'
211	250,343.27	8,838,149.80	625+29.25	70.00' RT.	S 64°38'06" E	483.72'
216	250,136.06	8,838,586.89	630+29.25	70.00' RT.	S 65°15'54" E	100.11'
220	250,094.17	8,838,677.81	631+29.02	61.75' RT.	S 65°15'53" E	378.32'
222	249,935.87	8,839,021.43	635+00.00	55.00' RT.	S 75°28'34" E	182.90'
223	249,890.00	8,839,198.48	636+79.16	36.73' RT.	S 73°02'49" E	173.04'
226	249,839.55	8,839,364.00	638+50.00	37.33' RT.	S 80°15'02" E	556.51'
231	249,745.31	8,839,912.47	644+00.00	39.33' RT.	S 84°20'59" E	180.80'
234	249,727.50	8,840,092.39	645+77.73	50.00' RT.	S 89°30'35" E	10.54'
237	249,727.42	8,840,102.93	645+88.27	50.00' RT.	S 89°30'35" E	10.54'
238	249,724.32	8,840,464.65	649+50.00	50.00' RT.	S 89°30'35" E	361.73'



FILED 5-24-94  
BAKER COUNTY SURVEYOR  
SURVEY NO. 14-38-12



/usr/rw/projects/04838/04838-rs24 02-MAY-1994

VIEW=P5