

SURVEY FOR OREGON DEPARTMENT OF TRANSPORTATION		SHEET No.
UNITY FOREST WAYSIDE - IRONSIDE SEC.		11
JOHN DAY HIGHWAY BAKER & MALHEUR COUNTIES		TOTAL SHEETS
		16

T. 14 S., R. 38 E., W.M.
Portion of 9B-36-22

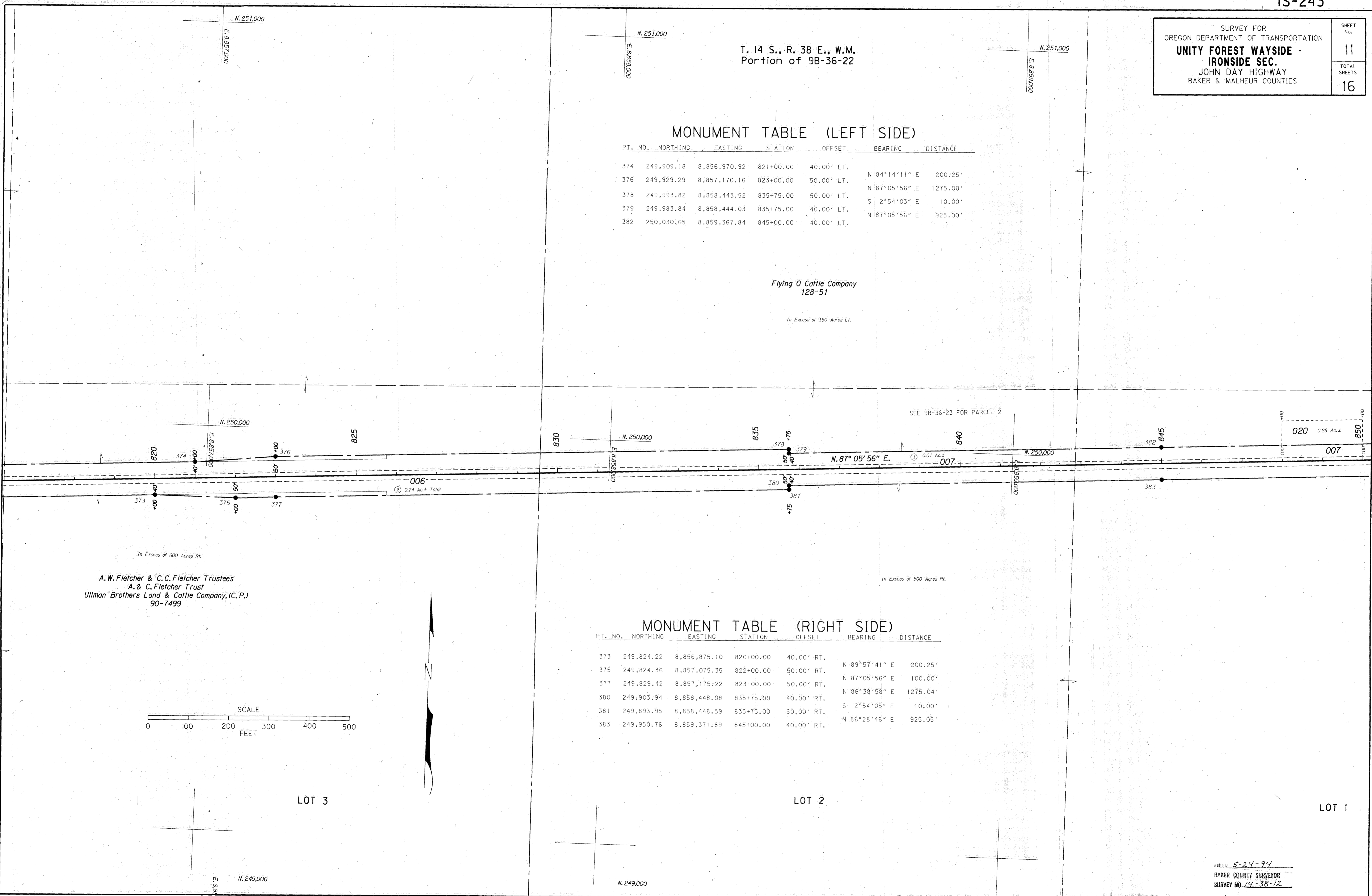
MONUMENT TABLE (LEFT SIDE)

PT. NO.	NORTHING	EASTING	STATION	OFFSET	BEARING	DISTANCE
374	249,909.18	8,856,970.92	821+00.00	40.00' LT.	N 84°14'11" E	200.25'
376	249,929.29	8,857,170.16	823+00.00	50.00' LT.	N 87°05'56" E	1275.00'
378	249,993.82	8,858,443.52	835+75.00	50.00' LT.	S 2°54'03" E	10.00'
379	249,983.84	8,858,444.03	835+75.00	40.00' LT.	N 87°05'56" E	925.00'
382	250,030.65	8,859,367.84	845+00.00	40.00' LT.		

Flying O Cattle Company
128-51

In Excess of 150 Acres Lt.

SEE 9B-36-23 FOR PARCEL 2



MONUMENT TABLE (RIGHT SIDE)

PT. NO.	NORTHING	EASTING	STATION	OFFSET	BEARING	DISTANCE
373	249,824.22	8,856,875.10	820+00.00	40.00' RT.	N 89°57'41" E	200.25'
375	249,824.36	8,857,075.35	822+00.00	50.00' RT.	N 87°05'56" E	100.00'
377	249,829.42	8,857,175.22	823+00.00	50.00' RT.	N 86°38'58" E	1275.04'
380	249,903.94	8,858,448.08	835+75.00	40.00' RT.	S 2°54'05" E	10.00'
381	249,893.95	8,858,448.59	835+75.00	50.00' RT.	N 86°28'46" E	925.05'
383	249,950.76	8,859,371.89	845+00.00	40.00' RT.		

