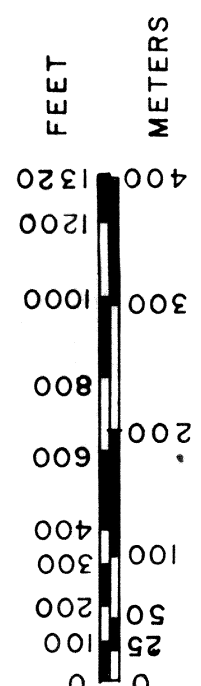


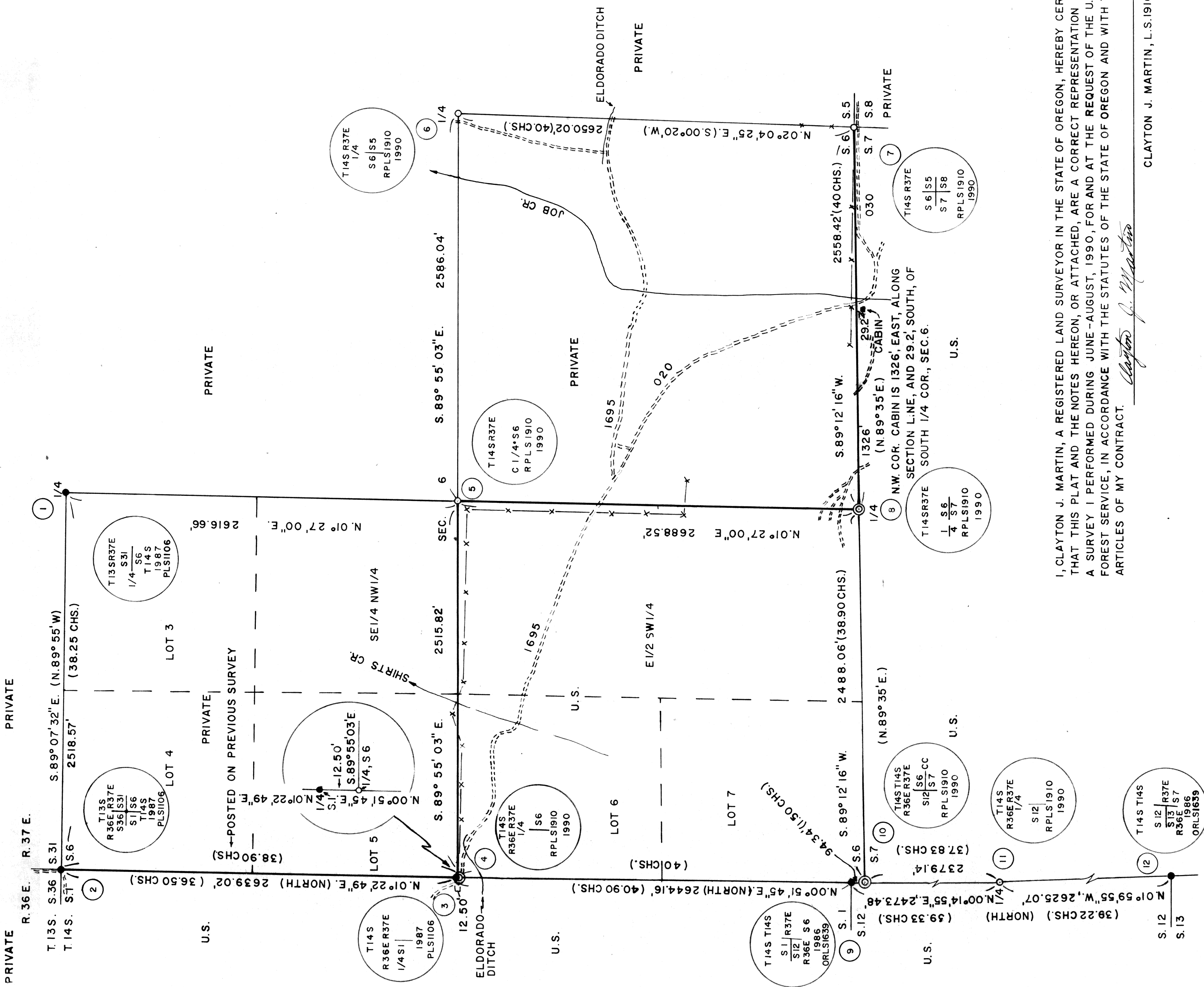
SCALE: 1" = 500'



1 METER = 3.280833 FEET

- LEGEND
- ( ) = G.L.O. OR GENERAL LAND OFFICE RECORD
  - D.B.H. = DIAMETER BREAST HEIGHT
  - ALUM. = ALUMINUM
  - MKD. = MARKED
  - CHS. = CHAINS
  - LKS. = LINKS
  - = PROPERTY LINE POSTED WITH 6" STEEL POSTS AND 54-2 SIGNS.
  - = MONUMENTS FOUND
  - = MONUMENTS SET FROM ORIGINAL EVIDENCE OR SURVEY
  - = MONUMENTS SET AT PROPORTIONED MEASURE
  - MAG. = MAGNETIC
  - DECL. = DECLINATION
  - == = ROAD
  - = CREEK
  - = BUTTE
  - = ESCARPMENT
  - = FENCE

BEARINGS FROM SOLAR OBSERVATION  
 STEEL FENCE POSTS ARE SET ON LINE, 4' FROM EACH CORNER, OR IN A CARDINAL DIRECTION,  
 WITH 54-2 B 54-9 SIGNS ATTACHED, OR AS APPROPRIATE.  
 B.T.S. HAVE B.T. TAGS, L.S.M. SIGNS, OR ATTN. SIGNS, BANDS AND FACES PAINTED RED.  
 B.T.S. SET BY ME HAVE BRASS WASHERS MKD. RPLS1910 SET BTWN. THE B & T.  
 5/8" X 30" REFERENCE RODS HAVE STEEL FENCE POSTS ALONGSIDE WITH B.T. TAGS AND  
 L.S.M. SIGNS ATTACHED.  
 THE CIRCLED NUMBERS BY THE CORNERS MATCH THOSE ON THE DESCRIPTION SHEETS.



I, CLAYTON J. MARTIN, A REGISTERED LAND SURVEYOR IN THE STATE OF OREGON, HEREBY CERTIFY THAT THIS PLAT AND THE NOTES HEREON, OR ATTACHED, ARE A CORRECT REPRESENTATION OF A SURVEY I PERFORMED DURING JUNE-AUGUST, 1990, FOR AND AT THE REQUEST OF THE U.S.D.A. FOREST SERVICE, IN ACCORDANCE WITH THE STATUTES OF THE STATE OF OREGON AND WITH THE ARTICLES OF MY CONTRACT.

CLAYTON J. MARTIN, L.S.1910

*Clayton J. Martin*

FILED 11-16-1990

CLAYTON J. MARTIN, L.S.1910

NO. 14-37-35

SHEET 1 OF 4

RECORD OF SURVEY FOR WALLOWA-WHITMAN NATIONAL FOREST  
 P.O. BOX 907, BAKER, OREGON 97814 AUGUST 16, 1990  
 PAYTON CADASTRAL SURVEY, CONTRACT NO. 04M3-9-6064  
 SEC. 6, T14S, R. 37 E., W.M., BAKER COUNTY, OREGON.  
 EXAMINED AND ACCEPTED FOR THE U.S. FOREST SERVICE THIS  
 24<sup>th</sup> DAY OF October 1990  
*Russell A. Chubb* C.O.R.

I CERTIFY THAT THIS SURVEY WAS PERFORMED AT THE REQUEST OF  
 THE WALLOWA-WHITMAN NATIONAL FOREST

NATIONAL FOREST SUPERVISOR

*Richard*  
 SIGNATURE

10/25/90  
 DATE