

GOVERNMENT CORNER RECORD

Township 13S Range 44E Section $\frac{9}{16}$ County BAKER

State OREGON Date 6/22/11 Number J-11

Corner Designation : 1/4 CORNER $\frac{9}{16}$

- Condition Report Only
- Not Found
- Renewed
- Surveyed In
- Reference

Previous Renewals _____

Monument(s) Found: (Condition and Source)

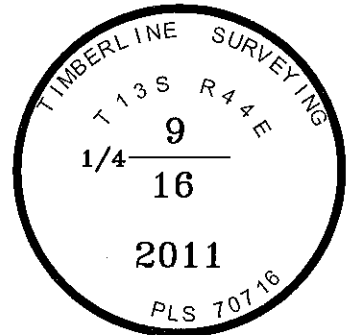
BASALT STONE 18X10X10 1/4 ON NORTH FACE
 MONUMENT IN GOOD CONDITION.

Accessories Found:

NONE

MONUMENT DETAIL

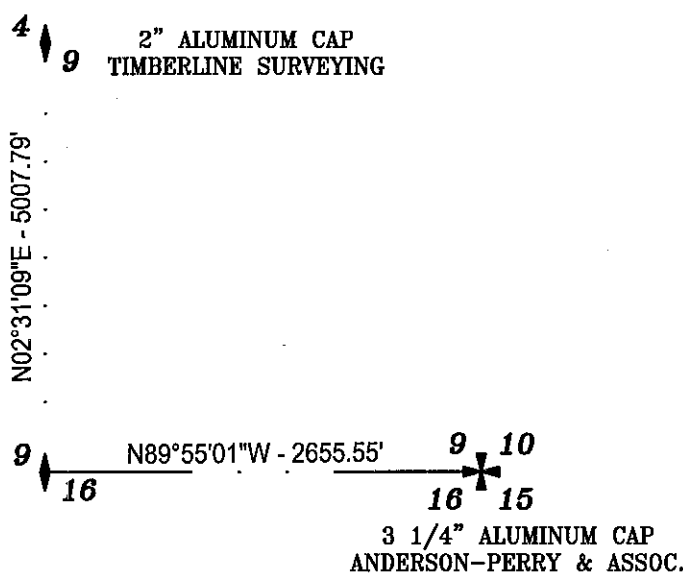
Found Set



Monument & Accessories Set (Procedure and Description)

SET FENO MONUMENT, WITH 2" ALUMINUM CAP, STAMPED AS SHOWN. BURIED ORIGINAL STONE FACE DOWN ALONG SOUTHERLY SIDE OF MONUMENT.

Sketch of Monument, Accessories and General Area



Surveyor's Seal

**REGISTERED
PROFESSIONAL
LAND SURVEYOR**

Russell Badgley
7/29/11

OREGON
NOVEMBER 13, 2007
RUSSELL BADGLEY
70716 LS

RENEWAL DATE : 12-31-11

Agency TIMBERLINE SURVEYING
 Party Chief M. FEMENIA
 Notekeeper _____
 Witness(s) _____

**COUNTY SURVEYOR
RECORDING INFO**

Received _____
 Filed Aug. 1, 2011
 Survey No. 13-44-29
 Drawing No. _____
 Index No. _____