

GOVERNMENT CORNER RECORD

Township 13S Range 44E Section 4/3 County BAKER
9/10

State OREGON Date 6/22/11 Number E-13

Corner Designation : SECTION CORNER 4/3
9/10

- Condition Report Only
- Not Found
- Renewed
- Surveyed In
- Reference

Previous Renewals _____

Monument(s) Found: (Condition and Source)
 BASALT STONE 16X10X5 5 NOTCHES ON SOUTH, 3 NOTCHES
 ON EAST EDGES. MONUMENT IN GOOD CONDITION.

MONUMENT DETAIL

Found Set



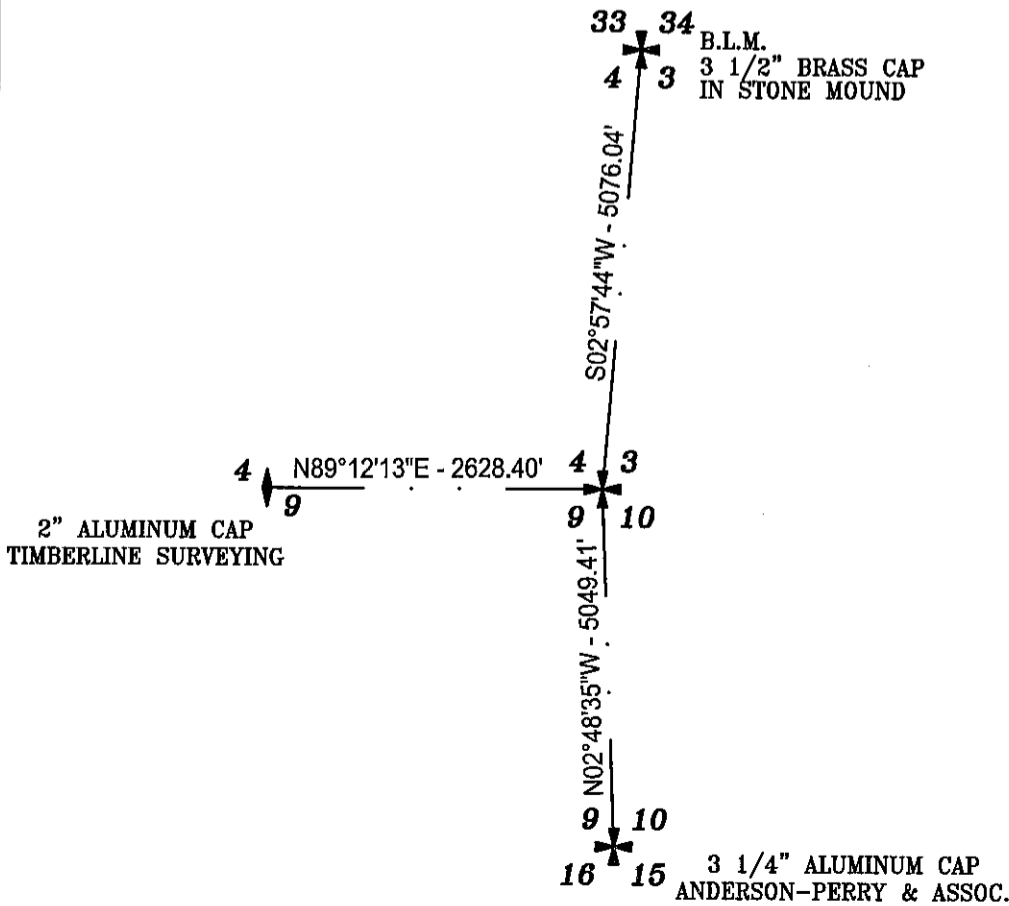
Accessories Found:

NONE

Monument & Accessories Set (Procedure and Description)

SET FENO MONUMENT, WITH 3" ALUMINUM CAP, STAMPED AS SHOWN. BURIED ORIGINAL STONE FACE DOWN
 ALONG NORTHERLY SIDE OF MONUMENT. ERECTED MOUND OF STONES, EASTERLY OF MONUMENT 2.5' BASE
 AND 1.5' HIGH.

Sketch of Monument, Accessories and General Area



Surveyor's Seal

REGISTERED
 PROFESSIONAL
 LAND SURVEYOR

Russell Badgley
 7/29/11

OREGON
 NOVEMBER 13, 2007
 RUSSELL BADGLEY
 70716 LS

RENEWAL DATE : 12-31-11

Agency TIMBERLINE SURVEYING

Party Chief M. FEMENIA

Notekeeper _____

Witness(s) _____

COUNTY SURVEYOR RECORDING INFO

Received _____

Filed Aug. 1, 2011

Survey No. 13-44-27

Drawing No. _____

Index No. _____