

S.E. 1/4 SEC. 9 T.13 S. R. 44 E. W.M.  
 N.W. 1/4 SEC. 15 T.13 S. R. 44 E. W.M.  
 N.E. 1/4 SEC. 16 T.13 S. R. 44 E. W.M.

SPIRAL TABLE			
SPIRAL	LENGTH	RADIUS	A
SP1	450.00	-954.93	655.53
SP2	450.00	954.93	655.53
SP3	600.00	1909.86	1070.47
SP4	750.00	-1909.86	1196.83

CURVE TABLE					
CURVE	LENGTH	RADIUS	DELTA	CHORD AND BRG.	TANGENT
C1	766.39	954.93	45°59'00"	S14°32'29"E 745.99	405.18
C2	637.77	1909.86	19°07'59"	N32°28'00"W 634.81	321.88

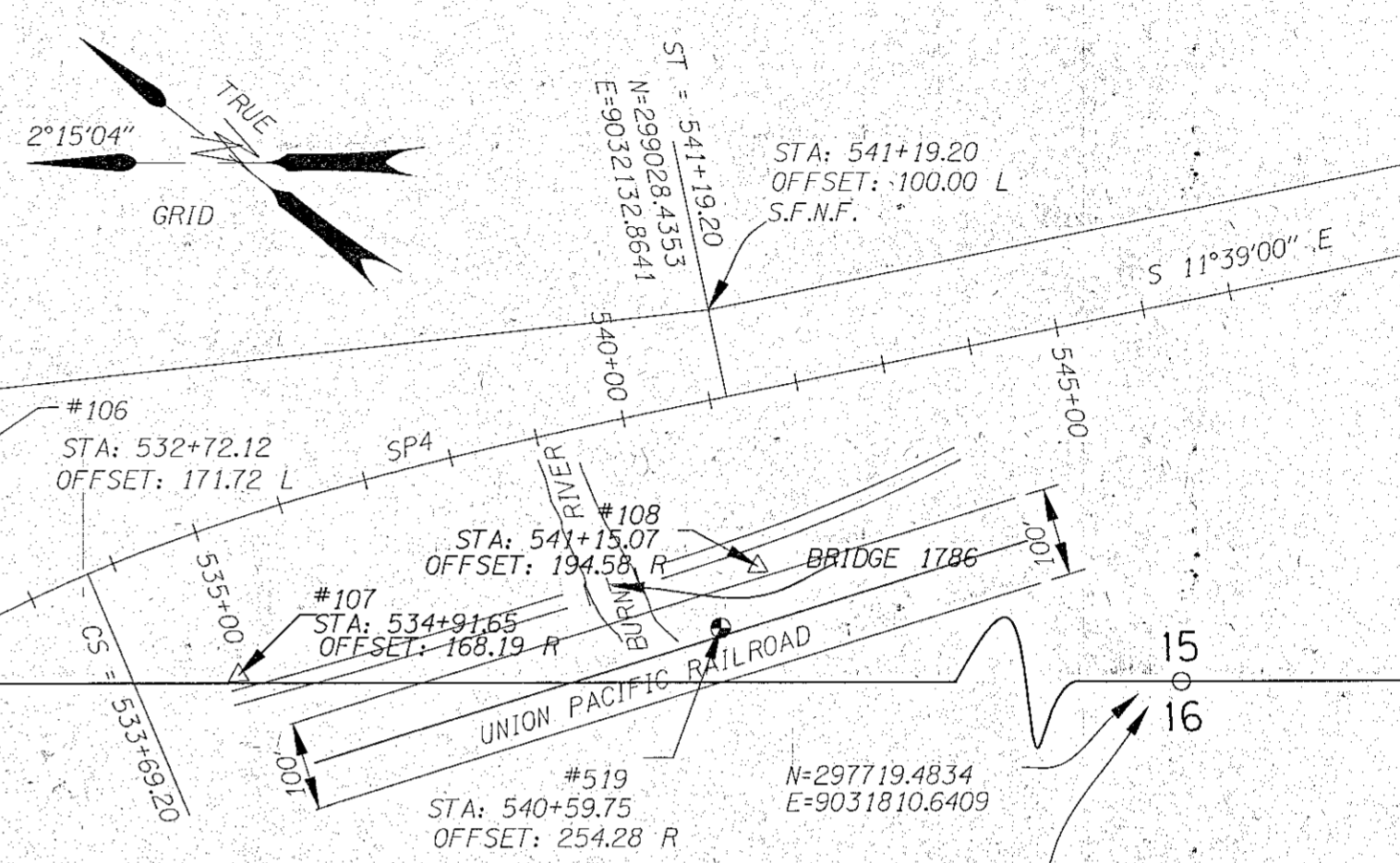
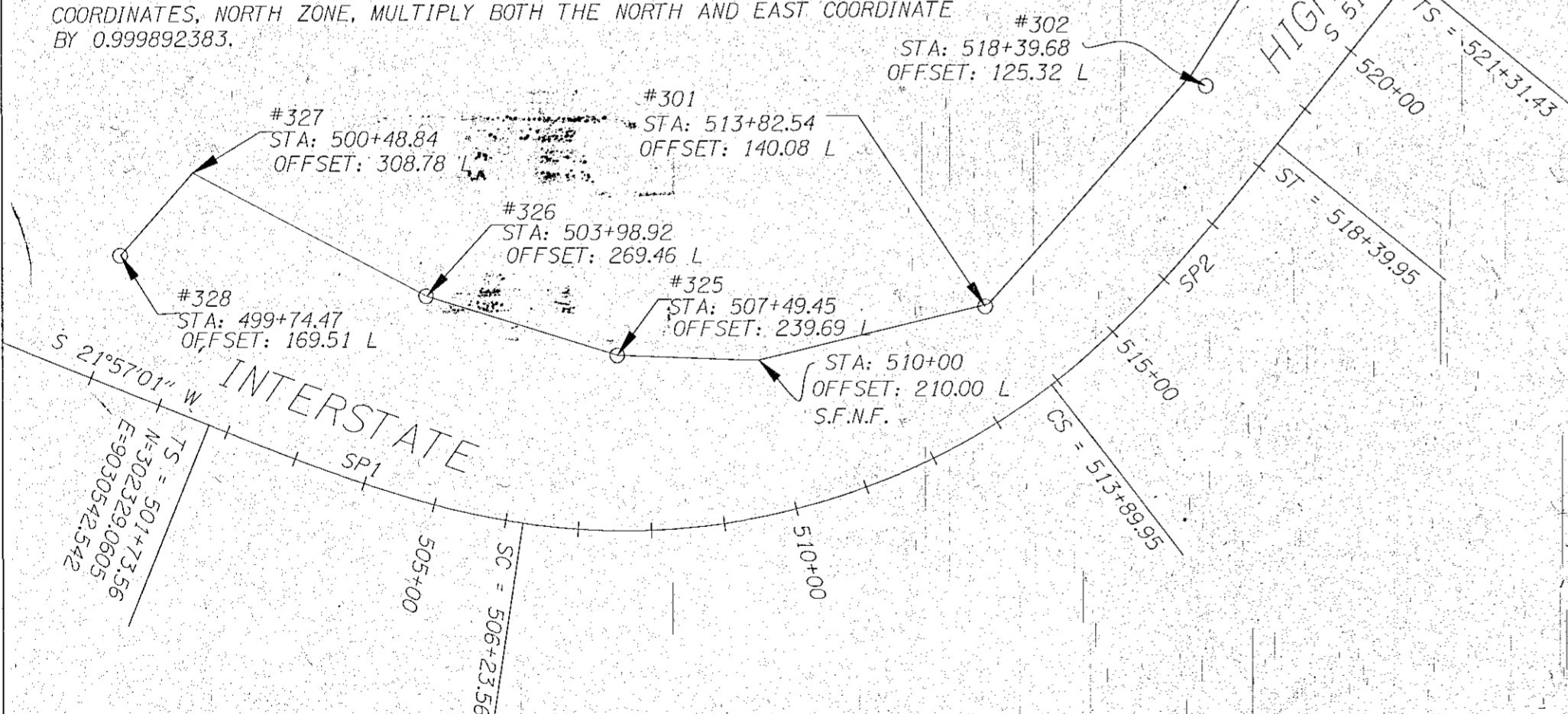
BEARINGS ARE BASED UPON THE OREGON STATE PLANE COORDINATE SYSTEM, NORTH ZONE, NAD83

FOUND A BASALT STONE 4"x 12"x 14", EXPOSED 7" ABOVE GROUND IN AN EAST-WEST FENCELINE, WITH 4 GROOVES ON SOUTH FACE AND 3 GROOVES ON EAST FACE, FIRMLY SET WITH A SMALL RING OF STONES AROUND.  
 SET A 2 1/2" x 30" ALUMINUM PIPE, 28" IN THE GROUND, WITH A 3 1/4" DIAMETER ALUMINUM CAP, PROPERLY MARKED.  
 STONE BURIED UPSIDE DOWN ON SOUTH SIDE OF ALUMINUM PIPE SEE MONUMENTATION RECORD FILED SEPARATELY.

**SURVEY NARRATIVE**

THIS SURVEY WAS MADE TO LOCATE SURVEY MONUMENTATION IN DANGER OF DESTRUCTION BY CONSTRUCTION ACTIVITIES IN THE VICINITY OF BRIDGE NUMBER 1786 LOCATED ON THE EAST BOUND ON-RAMP OF I-84 AT THE RYE VALLEY INTERCHANGE. IN ADDITION RIGHT-OF-WAY MONUMENTS WERE LOCATED AND USED TO RESOLVE THE CENTERLINE LOCATION OF THAT HIGHWAY AS SHOWN ON OREGON DEPARTMENT OF TRANSPORTATION MAP #8B-31-9. THE SURVEY WAS PERFORMED USING BOTH CONVENTIONAL AND GPS SURVEY TECHNIQUES USING A TRIMBLE 5600 TOTAL STATION WITH A STANDARD DEVIATION OF 0°00'03" ANGULARLY AND ±0.01 +3ppm IN DISTANCE. TOPCON REAL TIME KINEMATIC RECEIVERS WERE EMPLOYED WITH A STANDARD DEVIATION OF 1CM +1.0 ppm. ALL MONUMENTS WERE "DOUBLE-TIED" EITHER FROM SEPARATE LOCATIONS, USING DIFFERENT INSTRUMENTATION, FROM NEW GPS INITIALIZATIONS OR A COMBINATION OF ALL THREE TO PREVENT BLUNDERS AND PROVIDE REDUNDANCY IN MEASUREMENTS. MONUMENTS FOUND AT THE NORTHEAST CORNER AND THE EAST ONE-QUARTER CORNER OF SECTION 16 WERE REPLACED WITH MODERN SURVEY MONUMENTATION. MONUMENTATION RECORDS HAVE BEEN FILED AS SEPARATE DOCUMENTS.

COORDINATES SHOWN ARE BASED UPON AN OREGON DEPARTMENT OF TRANSPORTATION LOCAL DATUM PLANE. TO OBTAIN OREGON STATE PLANE COORDINATES, NORTH ZONE, MULTIPLY BOTH THE NORTH AND EAST COORDINATE BY 0.999892383.



FOUND A 1" IRON PIPE, FIRMLY SET EXTENDING 6" ABOVE GROUND, 36" LONG WITH SHARPENED END, WITH BASALT STONE 22"x6"x4", LOOSE AND HELD TO THE EAST SIDE OF THE IRON PIPE WITH BARBED WIRE. STONE IS MARKED "1/4" ON THE SIDE FACING EAST.  
 SET A 2 1/2" INCH ALUMINUM PIPE 30" LONG 28" IN THE GROUND WITH A 3 1/2" INCH ALUMINUM CAP PROPERLY MARKED.  
 STONE IS BURIED UPSIDE DOWN ON NORTH SIDE OF THE ALUMINUM PIPE. SEE MONUMENTATION RECORD FILED SEPARATELY.

POINT #	DESCRIPTION
328	FOUND 1 1/2" INCH ALUMINUM CAP, FLUSH WITH GROUND, MARKED "OREGON STATE HWY DEPT" FOUND POST AND PADDLE 2' SOUTH, MARKED 499+75 170' LT P.O.T.
327	FOUND POST AND PADDLE, ROD AND CAP SEARCHED FOR BUT NOT FOUND
326	FOUND 5/8" INCH SMOOTH IRON ROD, 0.2' ABOVE GROUND, NO CAP, POST AND PADDLE LYING ON GROUND, ROD BENT TO WEST, TIED AT SPIN HOLE.
325	FOUND 1 1/2" INCH ALUMINUM CAP, FLUSH WITH GROUND, MARKED "OREGON STATE HWY DEPT" FOUND POST AND PADDLE 2' EAST, MARKED 507+50 240' LT
301	FOUND 5/8" SMOOTH IRON ROD, BURIED 0.3' BELOW GROUND WITH 1 1/2" INCH ALUMINUM CAP (DETACHED) ALONGSIDE. WITNESS POST AND PADDLE MARKED SHRP 513+89.95 PCS 140' LT
302	FOUND 5/8" SMOOTH IRON ROD, BURIED 0.2', APPROXIMATELY 15' EAST OF TOP OF LEFT BANK OF THE BURNT RIVER, NO CAP, NO WITNESS POST
303	FOUND 5/8" SMOOTH IRON ROD, 0.8' ABOVE GROUND, NO CAP, WITNESS POST AND PADDLE MARKED SHRP 322+00 POS 190' LT
305	FOUND 5/8" SMOOTH IRON ROD, BURIED 0.3', 2' NORTHEAST OF CORNER OF FENCES RUNNING SOUTH, WEST, AND NORTHWEST, WITH 1 1/2" ALUMINUM CAP MARKED "OREGON STATE HWY DEPT" WITNESS POST AND PADDLE MARKED SHRP 530+50 POC 375' LT
108	FOUND A 1/2" SQUARE IRON ROD WITH 1 1/2" ALUMINUM CAP MARKED "ODOT, 108, 2004"
107	FOUND A 1/2" SQUARE IRON ROD WITH 1 1/2" ALUMINUM CAP MARKED "ODOT, 107, 2004"
106	FOUND A 1/2" SQUARE IRON ROD WITH 1 1/2" ALUMINUM CAP MARKED "ODOT, 106, 2004"
519	FOUND USGS BENCHMARK E 490, (PID Q80664), A STANDARD BRASS DISK SET IN THE EAST END OF THE SOUTH ABUTMENT OF THE RAILROAD BRIDGE OVER THE BURNT RIVER. ELEVATION = 2276.24' NAVD88.

REGISTERED PROFESSIONAL LAND SURVEYOR  
 H.M.  
 OREGON  
 APR. 21, 1988  
 HARMON E. McLENDON  
 2887  
 Review 12/21/06

ANDERSON-PERRY & ASSOCIATES  
 1901 N. FIR ST., LA GRANDE, OR. 97850  
 MONUMENT RECOVERY AND CENTERLINE RESOLUTION  
 INTERSTATE 84 AT THE RYE VALLEY INTERCHANGE  
 BAKER COUNTY, OR.  
 FOR HDR., INC &  
 THE OREGON BRIDGE  
 DEVELOPMENT PARTNERSHIP  
 JUNE, 2006  
 SCALE: 1" = 200'  
 SHEET 1 OF 1