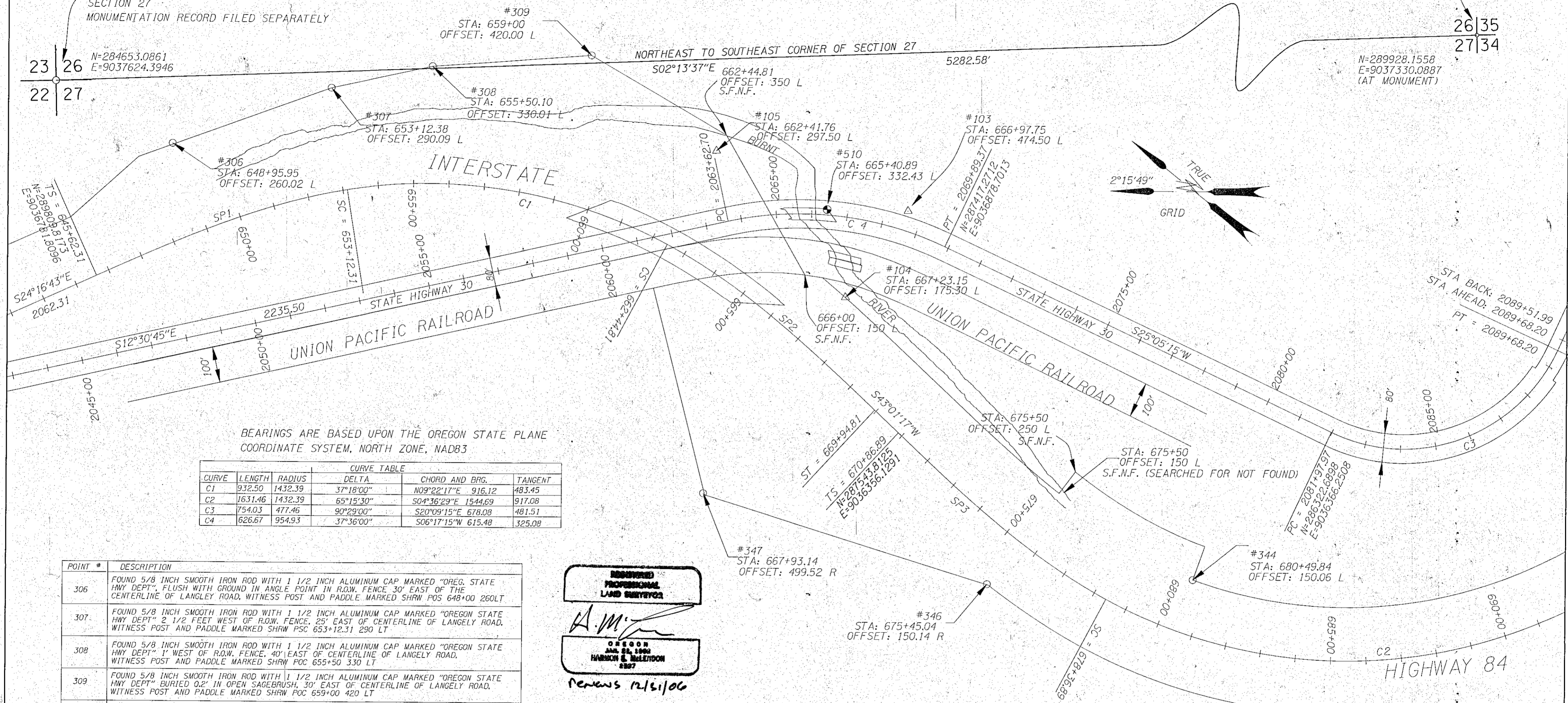


N.E. 1/4 SEC. 27 T.13 S. R. 44 E. W.M.

FOUND A 3/4 INCH IRON PIPE 37 INCHES LONG, FIRMLY SET AND EXTENDING 0.4' ABOVE GROUND WITH A BASALT STONE, SPLIT IN TWO PIECES, 15"x8"x4" LEANING TO THE NORTHWEST, WITH 2 GROOVES ON THE SOUTH FACE AND 2 GROOVES ON THE EAST FACE.

SET A 2 1/2 INCH x 30 INCH ALUMINUM PIPE 26 INCHES IN THE GROUND, WITH A 3 1/4 INCH ALUMINUM CAP, PROPERLY MARKED FOR THE NORTHEAST CORNER OF SECTION 27
MONUMENTATION RECORD FILED SEPARATELY

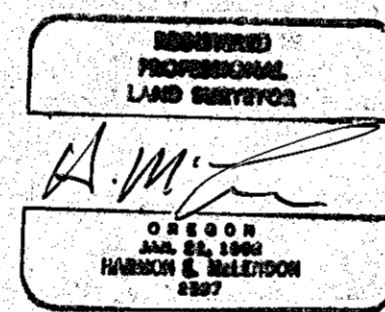
FOUND A 1 1/2 INCH IRON PIPE, FIRMLY SET, EXTENDING 16 INCHES ABOVE GROUND AND LEANING SLIGHTLY WEST.
SET A 2 1/2 INCH x 30 INCH ALUMINUM PIPE, 28 INCHES IN THE GROUND WITH A 3 1/2 INCH ALUMINUM CAP PROPERLY MARKED FOR THE WITNESS CORNER TO THE SOUTHEAST CORNER OF SECTION 27.
CORNER FALLS IN THE CHANNEL OF THE BURNT RIVER, S87°44'11"W 89.10' DISTANT. MONUMENTATION RECORD FILED SEPARATELY.



BEARINGS ARE BASED UPON THE OREGON STATE PLANE COORDINATE SYSTEM, NORTH ZONE, NAD83

CURVE	LENGTH	RADIUS	DELTA	CHORD AND BRG.	TANGENT
C1	932.50	1432.39	37°18'00"	N09°22'17"E 916.12	483.45
C2	1631.46	1432.39	65°15'30"	S04°36'29"E 1544.69	917.08
C3	754.03	471.46	90°29'00"	S20°09'15"E 678.08	481.51
C4	626.67	954.93	37°36'00"	S06°17'15"W 615.48	325.08

POINT #	DESCRIPTION
306	FOUND 5/8 INCH SMOOTH IRON ROD WITH 1 1/2 INCH ALUMINUM CAP MARKED "OREG. STATE HWY DEPT", FLUSH WITH GROUND IN ANGLE POINT IN R.O.W. FENCE 30' EAST OF THE CENTERLINE OF LANGLEY ROAD, WITNESS POST AND PADDLE MARKED SHRW POS 648+00 260LT
307	FOUND 5/8 INCH SMOOTH IRON ROD WITH 1 1/2 INCH ALUMINUM CAP MARKED "OREGON STATE HWY DEPT" 2 1/2 FEET WEST OF R.O.W. FENCE, 25' EAST OF CENTERLINE OF LANGLEY ROAD, WITNESS POST AND PADDLE MARKED SHRW POC 653+12.31 290 LT
308	FOUND 5/8 INCH SMOOTH IRON ROD WITH 1 1/2 INCH ALUMINUM CAP MARKED "OREGON STATE HWY DEPT" 1' WEST OF R.O.W. FENCE, 40' EAST OF CENTERLINE OF LANGLEY ROAD, WITNESS POST AND PADDLE MARKED SHRW POC 655+50 330 LT
309	FOUND 5/8 INCH SMOOTH IRON ROD WITH 1 1/2 INCH ALUMINUM CAP MARKED "OREGON STATE HWY DEPT" BURIED 0.2' IN OPEN SAGEBRUSH, 30' EAST OF CENTERLINE OF LANGLEY ROAD, WITNESS POST AND PADDLE MARKED SHRW POC 659+00 420 LT
309	FOUND 5/8 INCH SMOOTH IRON ROD WITH 1 1/2 INCH ALUMINUM CAP MARKED "OREGON STATE HWY DEPT" FLUSH WITH GROUND, 1' WEST OF BARBED WIRE FENCE, 12' SOUTHWEST OF BREAK TO BURNT RIVER, WITNESS POST AND PADDLE MARKED SHRW POC 660+50 150 LT
345	FOUND 5/8 INCH SMOOTH IRON ROD WITH 1 1/2 INCH ALUMINUM CAP MARKED "OREGON STATE HWY DEPT" FLUSH WITH GROUND, 0.5' WEST OF BARBED WIRE FENCE, WITNESS POST AND PADDLE MARKED SHRW POC 667+00 150 RT
346	FOUND 5/8 INCH SMOOTH IRON ROD WITH 1 1/2 INCH ALUMINUM CAP MARKED "OREGON STATE HWY DEPT" FLUSH WITH GROUND, 0.3' WEST OF BARBED WIRE FENCE, WITNESS POST AND PADDLE MARKED SHRW POS 675+50 150' RT
347	FOUND 5/8 INCH SMOOTH IRON ROD WITH 1 1/2 INCH ALUMINUM CAP MARKED "OREGON STATE HWY DEPT" FLUSH WITH GROUND, 1' NORTH OF NORTHWEST FENCE CORNER, WITNESS POST AND PADDLE MARKED SHRW POS 668+00 500 RT
103	FOUND 1/2 INCH SQUARE IRON ROD WITH 1 1/2 INCH ALUMINUM CAP MARKED "ODOT 103, 2004" CARSONITE POST ALONGSIDE
104	FOUND 1/2 INCH SQUARE IRON ROD WITH 1 1/2 INCH ALUMINUM CAP MARKED "ODOT 104, 2004" CARSONITE POST ALONGSIDE
105	FOUND 1/2 INCH SQUARE IRON ROD WITH 1 1/2 INCH ALUMINUM CAP MARKED "ODOT 105, 2004" CARSONITE POST ALONGSIDE
510	FOUND OREGON DEPARTMENT OF TRANSPORTATION BENCHMARK Q 197, (PID #QB0668), 3 INCH BRASS DISC SET FLUSH IN THE EAST WALK OF BRIDGE #1788, 4 FEET NORTH OF THE SOUTH END OF THE BRIDGE, MARKED Q 197 1941.



SURVEY NARRATIVE

THIS SURVEY WAS MADE TO LOCATE SURVEY MONUMENTATION IN DANGER OF DESTRUCTION BY CONSTRUCTION ACTIVITIES IN THE VICINITY OF BRIDGE NUMBERS 9354 AND 1788 LOCATED AT THE LIME INTERCHANGE ON INTERSTATE HIGHWAY 84 AND STATE HIGHWAY 30 IN BAKER COUNTY. IN ADDITION RIGHT-OF-WAY MONUMENTS WERE LOCATED AND USED TO RESOLVE THE CENTERLINE LOCATION OF THAT HIGHWAY AS SHOWN ON OREGON DEPARTMENT OF TRANSPORTATION MAP #8B-31-18 AND 2B-24-24. THE SURVEY WAS PERFORMED USING BOTH CONVENTIONAL AND GPS SURVEY TECHNIQUES USING A TRIMBLE 5600 TOTAL STATION WITH A STANDARD DEVIATION OF 0°00'03" ANGULARLY AND ±0.01 +3ppm IN DISTANCE. TOPCON REAL TIME KINEMATIC RECEIVERS WERE EMPLOYED WITH A STANDARD DEVIATION OF 1CM +1.0 ppm. ALL MONUMENTS WERE "DOUBLE-TIED" EITHER FROM SEPARATE LOCATIONS, USING DIFFERENT INSTRUMENTATION, FROM NEW GPS INITIALIZATIONS OR A COMBINATION OF ALL THREE TO PREVENT BLUNDERS AND PROVIDE REDUNDANCY IN MEASUREMENTS. MONUMENTS FOUND AT THE NORTHEAST CORNER AND THE SOUTHEAST CORNER OF SECTION 27 WERE REPLACED WITH MODERN SURVEY MONUMENTATION. MONUMENTATION RECORDS HAVE BEEN FILED AS SEPARATE DOCUMENTS.

COORDINATES SHOWN ARE BASED UPON AN OREGON DEPARTMENT OF TRANSPORTATION LOCAL DATUM PLANE. TO OBTAIN OREGON STATE PLANE COORDINATES, NORTH ZONE, MULTIPLY BOTH THE NORTH AND EAST COORDINATE BY 0.999892383.

ANDERSON-PERRY & ASSOCIATES
1901 N. FIR ST., LA GRANDE, OR. 97850

MONUMENT RECOVERY AND CENTERLINE RESOLUTION
INTERSTATE 84 AT THE LIME
INTERCHANGE
BAKER COUNTY, OR.

FOR HDR., INC &
THE OREGON BRIDGE
DEVELOPMENT PARTNERSHIP

JUNE, 2006
SCALE: 1" = 200'
SHEET 1 OF 1