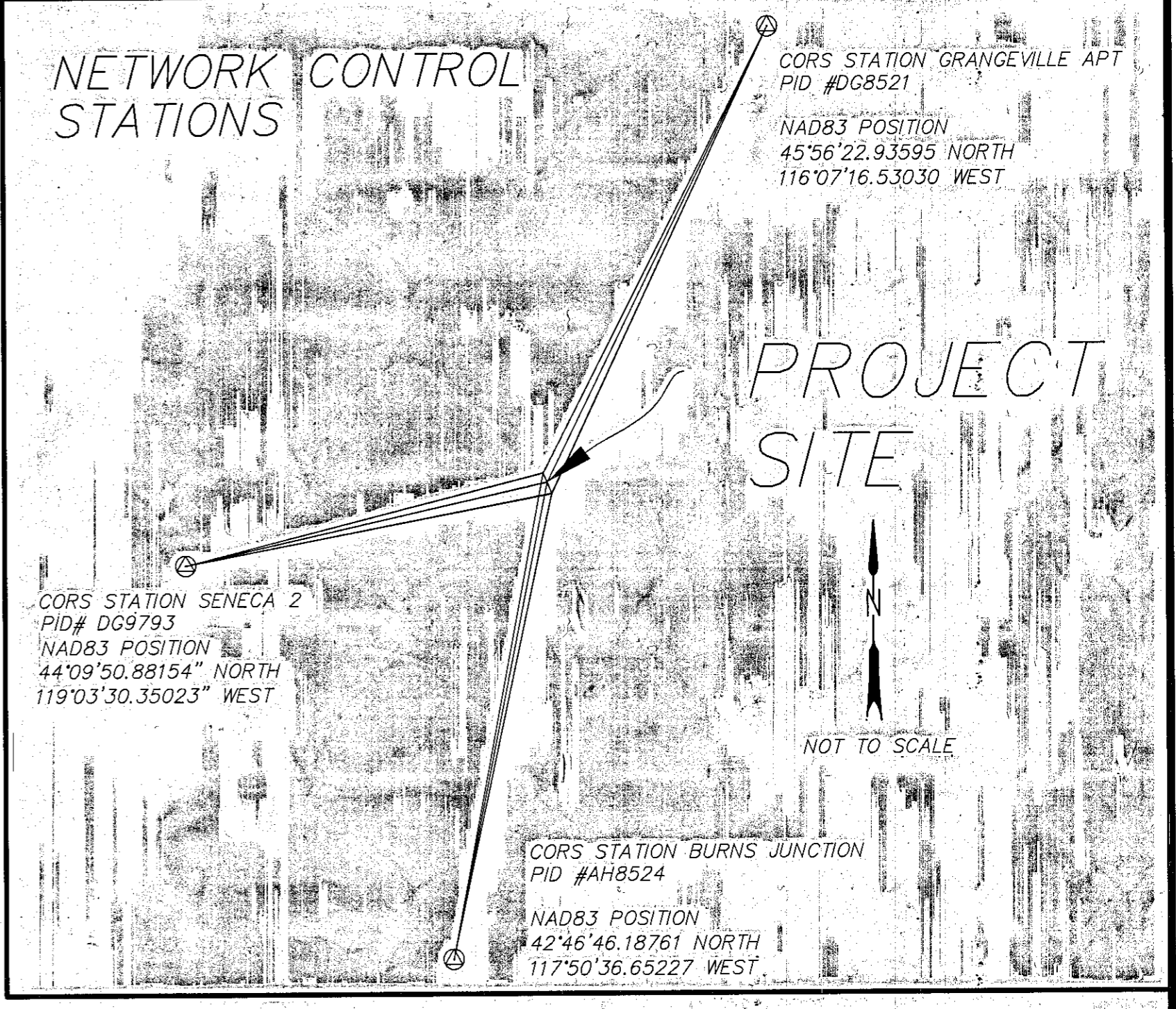
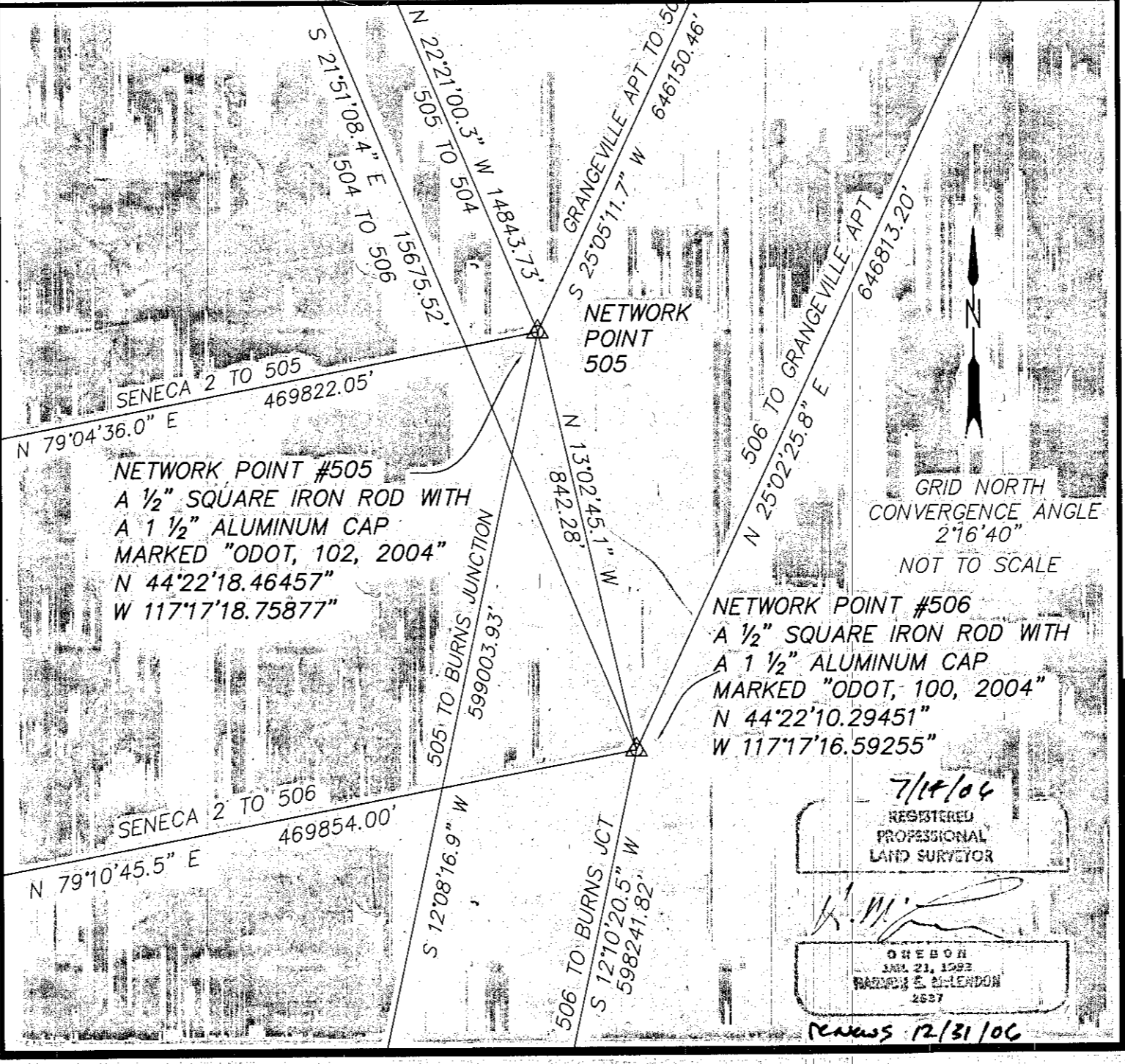
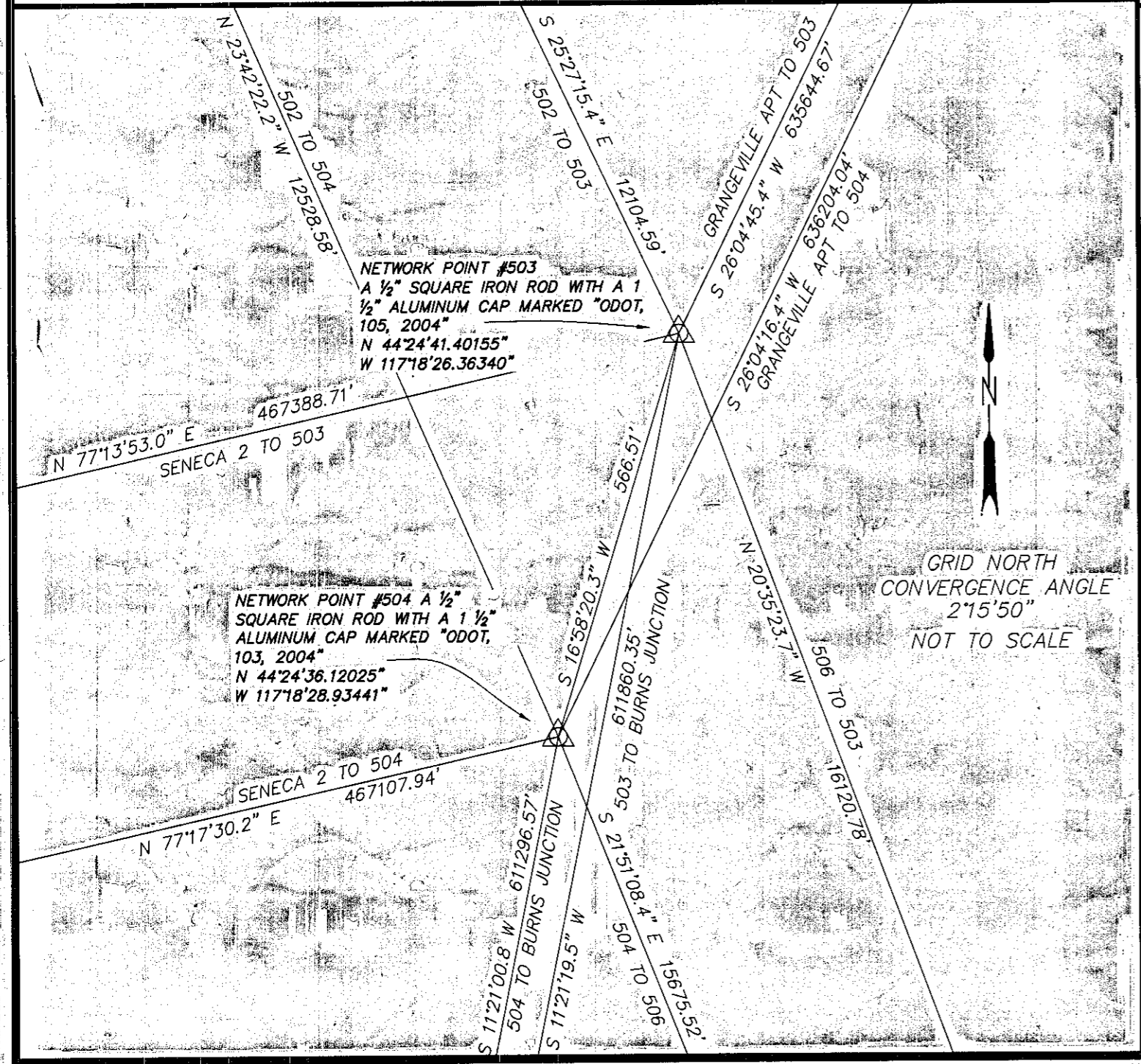


**SURVEY NARRATIVE**  
THIS SURVEY IS FILED TO COMPLY WITH OREGON REVISED STATUTES 209.250 SUBSECTION 5. IT WAS PERFORMED UNDER CONTRACT WITH HDR, INC. AND THE OREGON BRIDGE DEVELOPMENT PARTNERSHIP, (OBDP) IN THE SPRING OF 2006. THE PURPOSE OF THE SURVEY WAS TO TIE EXISTING OREGON DEPARTMENT OF TRANSPORTATION, (ODOT), MONUMENTS TO THE OREGON STATE PLANE COORDINATE SYSTEM. DUAL FREQUENCY GPS RECEIVERS WERE EMPLOYED USING FAST STATIC TECHNIQUES TO MEASURE BASELINES BETWEEN THOSE MONUMENTS SHOWN HEREON. THOSE BASELINES WERE PROCESSED USING TRIMBLE GEOMATICS OFFICE SOFTWARE. RINEX FILES FROM THE THREE CONTINUOUSLY OPERATING REFERENCE STATIONS, (CORS), SHOWN WERE THEN ADDED TO THE NETWORK AS CONTROL AND THE NETWORK WAS ADJUSTED USING A LEAST SQUARES ADJUSTMENT. THE NETWORK PASSED THE CHI SQUARE TEST AT THE 95% CONFIDENCE LEVEL WITH A REFERENCE FACTOR OF 1.11. THERE IS NOT A VERTICAL COMPONENT TO THE NETWORK. THE COORDINATES OBTAINED FROM THE GEODETIC NETWORK ARE NAD83 OREGON STATE PLANE NORTH ZONE, EXPRESSED IN INTERNATIONAL FEET AND MODIFIED TO GROUND COORDINATES BY THE USE OF AN ODOT LOCAL DATUM PLANE, (LDP), CONVERSION FACTOR OF 1.00010762897.



#503 IS LOCATED APPROXIMATELY 143 FEET EAST OF THE EAST EDGE OF PAVEMENT FOR THE WEST BOUND ONRAMP TO I-84 AT NORTH LIME, APPROXIMATELY 15 FEET ABOVE THE BURNT RIVER. #504 IS LOCATED APPROXIMATELY 30 FEET EAST OF HIGHWAY 30 ON A KNOB APPROXIMATELY 175 FEET SOUTHEAST OF BRIDGE #01788 AND APPROXIMATELY 15 FEET ABOVE THE HIGHWAY ON THE WEST SIDE OF A ROAD INTO A ROCK PIT. #505 IS LOCATED APPROXIMATELY 25 FEET EAST OF HIGHWAY 30 NEAR THE SOUTH END OF A GRAVEL TURNOUT APPROXIMATELY 570 FEET NORTH OF BRIDGE #01789. #506 IS LOCATED ON THE WEST SIDE OF HIGHWAY 30 AT APPROXIMATE MILE POST 3.9, APPROXIMATELY 175 FEET SOUTH OF BRIDGE #01789, APPROXIMATELY 3.5 FEET WEST OF THE WEST EDGE OF PAVEMENT.



NETWORK POINTS STATE PLANE COORDINATES  
NAD 83 OREGON NORTH

POINT #	NORTHING	EASTING
501	299547.6440	9030847.7600
502	298961.0390	9030969.4560
503	288032.6370	9036171.3380
504	287490.8620	9036005.9870
505	273763.7060	9041649.9280
506	272943.2540	9041840.0360

NETWORK POINTS LOCAL DATUM PLANE COORDINATES

POINT #	NORTHING	EASTING
501	299579.8840	9031819.7408
502	298993.2159	9031941.4499
503	288063.6377	9037143.8918
504	287521.8043	9036978.5230
505	273793.1709	9042623.0715
506	272972.6306	9042813.1999

GEODETIC CONTROL NETWORK  
I-84 BURNT RIVER (DIXIE CRK-LIME INTERCHANGE)  
SECTIONS 16,21,22,27 T13S, R44E  
BAKER COUNTY, OREGON  
HDR INC/OREGON BRIDGE DEVELOPMENT PARTNERSHIP

SCALE:  
AS SHOWN  
DATE:  
MAY 2006  
JOB NO.  
863-77

**Anderson Perry & Associates, Inc.**  
REGISTERED PROFESSIONAL LAND SURVEYOR  
ENGINEERING SURVEYING MATERIALS TESTING  
1901 NORTH FIR STREET  
LA GRANDE, OR. 97850

SHEET  
1/1

FILED SEPTEMBER 22, 2006  
BAKER COUNTY SURVEYOR  
SURVEY NO. 13-44-11