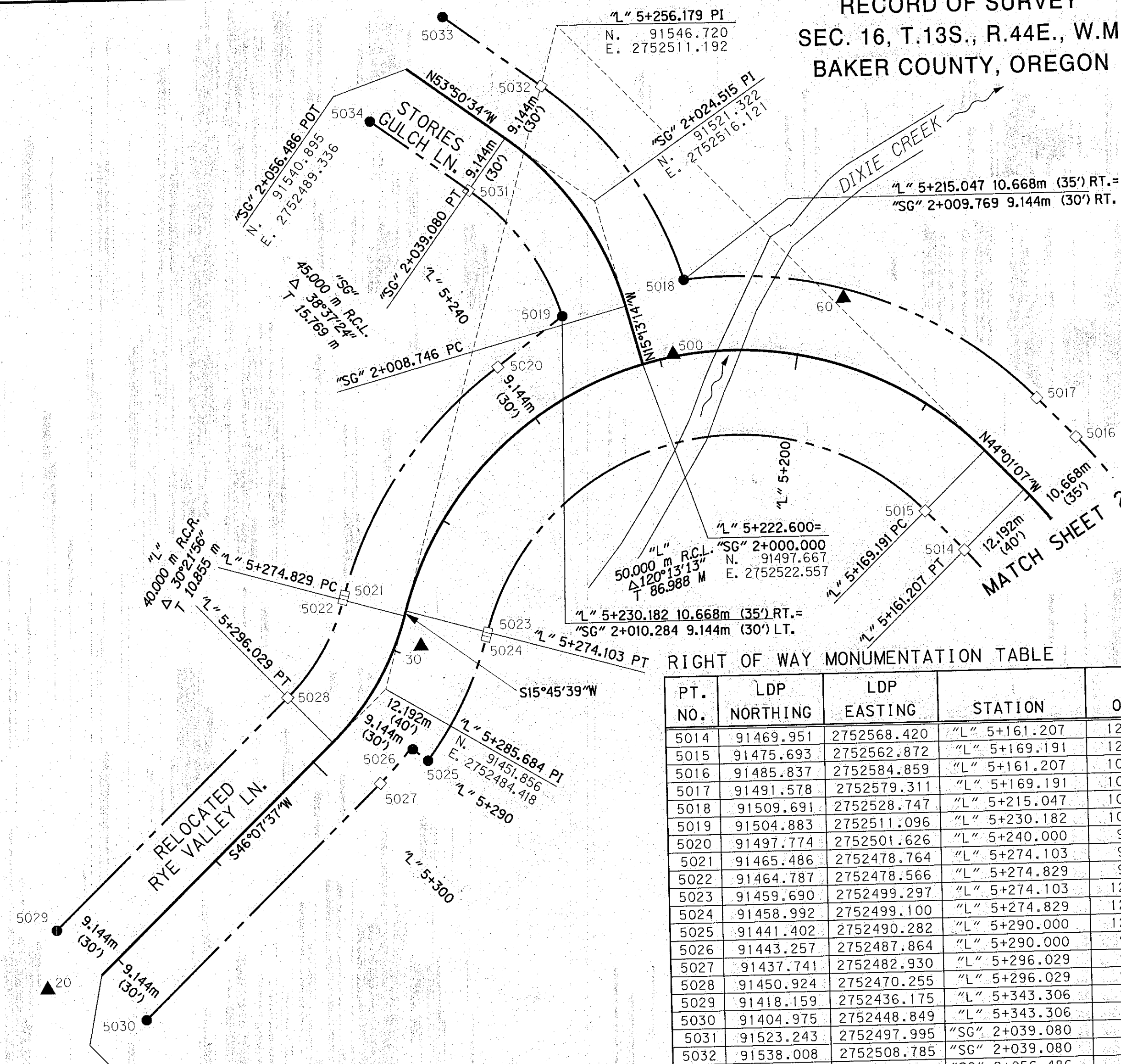
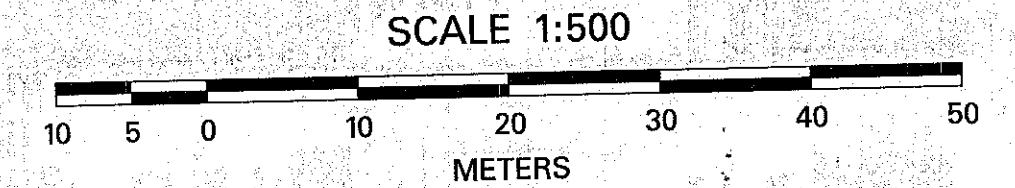


RECORD OF SURVEY
 SEC. 16, T.13S., R.44E., W.M.
 BAKER COUNTY, OREGON



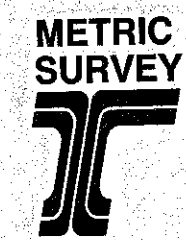
RIGHT OF WAY MONUMENTATION TABLE

PT. NO.	LDP NORTHING	LDP EASTING	STATION	OFFSET	DESCRIPTION
5014	91469.951	2752568.420	"L" 5+161.207	12.192 L	CALCULATED POSITION - NO MONUMENT SET
5015	91475.693	2752562.872	"L" 5+169.191	12.192 L	CALCULATED POSITION - NO MONUMENT SET
5016	91485.837	2752584.859	"L" 5+161.207	10.668 R	CALCULATED POSITION - NO MONUMENT SET
5017	91491.578	2752579.311	"L" 5+169.191	10.668 R	SET 16mm X 762mm IRON ROD W/YPC STAMPED "OBEC PLS 2553"
5018	91509.691	2752528.747	"L" 5+215.047	10.668 R	SET 16mm X 762mm IRON ROD W/YPC STAMPED "OBEC PLS 2553"
5019	91504.883	2752511.096	"L" 5+230.182	10.668 R	SET 16mm X 762mm IRON ROD W/YPC STAMPED "OBEC PLS 2553"
5020	91497.774	2752501.626	"L" 5+240.000	9.144 R	CALCULATED POSITION - NO MONUMENT SET
5021	91465.486	2752478.764	"L" 5+274.103	9.144 R	CALCULATED POSITION - NO MONUMENT SET
5022	91464.787	2752478.566	"L" 5+274.829	9.144 R	CALCULATED POSITION - NO MONUMENT SET
5023	91459.690	2752499.297	"L" 5+274.103	12.192 L	CALCULATED POSITION - NO MONUMENT SET
5024	91458.992	2752499.100	"L" 5+274.829	12.192 L	CALCULATED POSITION - NO MONUMENT SET
5025	91441.402	2752490.282	"L" 5+290.000	9.144 L	SET 16mm X 762mm IRON ROD W/YPC STAMPED "OBEC PLS 2553"
5026	91443.257	2752487.864	"L" 5+290.000	9.144 L	SET 16mm X 762mm IRON ROD W/YPC STAMPED "OBEC PLS 2553"
5027	91437.741	2752482.930	"L" 5+296.029	9.144 R	CALCULATED POSITION - NO MONUMENT SET
5028	91450.924	2752470.255	"L" 5+296.029	9.144 R	SET 16mm X 762mm IRON ROD W/YPC STAMPED "OBEC PLS 2553"
5029	91418.159	2752436.175	"L" 5+343.306	9.144 R	SET 16mm X 762mm IRON ROD W/YPC STAMPED "OBEC PLS 2553"
5030	91404.975	2752448.849	"L" 5+343.306	9.144 L	SET 16mm X 762mm IRON ROD W/YPC STAMPED "OBEC PLS 2553"
5031	91523.243	2752497.995	"SG" 2+039.080	9.144 L	CALCULATED POSITION - NO MONUMENT SET
5032	91538.008	2752508.785	"SG" 2+039.080	9.144 R	CALCULATED POSITION - NO MONUMENT SET
5033	91548.278	2752494.731	"SG" 2+056.486	9.144 R	SET 16mm X 762mm IRON ROD W/YPC STAMPED "OBEC PLS 2553"
5034	91533.512	2752483.941	"SG" 2+056.486	9.144 L	SET 16mm X 762mm IRON ROD W/YPC STAMPED "OBEC PLS 2553"

LEGEND

- SET 16mm (5/8") X 762mm (30") IRON ROD W/YELLOW PLASTIC CAP STAMPED "OBEC PLS 2553", UNLESS OTHERWISE NOTED.
- ▲ PROJECT CONTROL POINT FOUND OR SET AS NOTED.
- CALCULATED POSITION
- N 70°46'22" E MEASURED INFORMATION
- RIGHT OF WAY
- CENTERLINE

NOTE:
 ALL DIMENSIONS ARE
 IN METERS EXCEPT
 AS NOTED.



FILED July 23, 2003
 BAKER COUNTY SURVEYOR
 SURVEY NO. 13-44-6

REGISTERED
 PROFESSIONAL
 LAND SURVEYOR

OREGON
 JULY 21, 1992
 WAYNE R. DONOVAN
 2553

RENEWAL DATE: DEC. 31, 2003
 SIGNED: 07/19/03

OBEC CONSULTING ENGINEERS
 920 COUNTRY CLUB RD., SUITE 100B
 EUGENE, OREGON 97401
 TEL. (541) 683-6090 FAX. (541) 683-6576

RIGHT OF WAY MONUMENTATION SURVEY
 DIXIE CREEK BRIDGE SEC.
 RELOCATED RYE VALLEY LANE
 FOR BAKER COUNTY AND
 OREGON DEPARTMENT OF TRANSPORTATION
 JULY 2003

BAKER COUNTY, OREGON	DESIGNED: W. DONOVAN	PROJ. NO. 19-66.4F	SCALE 1:500
	DRAWN: AD	FILE NO. 130695	SHT. 3 OF 3

M.L. ADKINS, C.E. Surveyor OBEC
 APPROVED BY: _____ TITLE _____

07/14/2003
 R:\Projects\019\06604\Survey\CAD\MIS\01906604.rw.mon.dgn