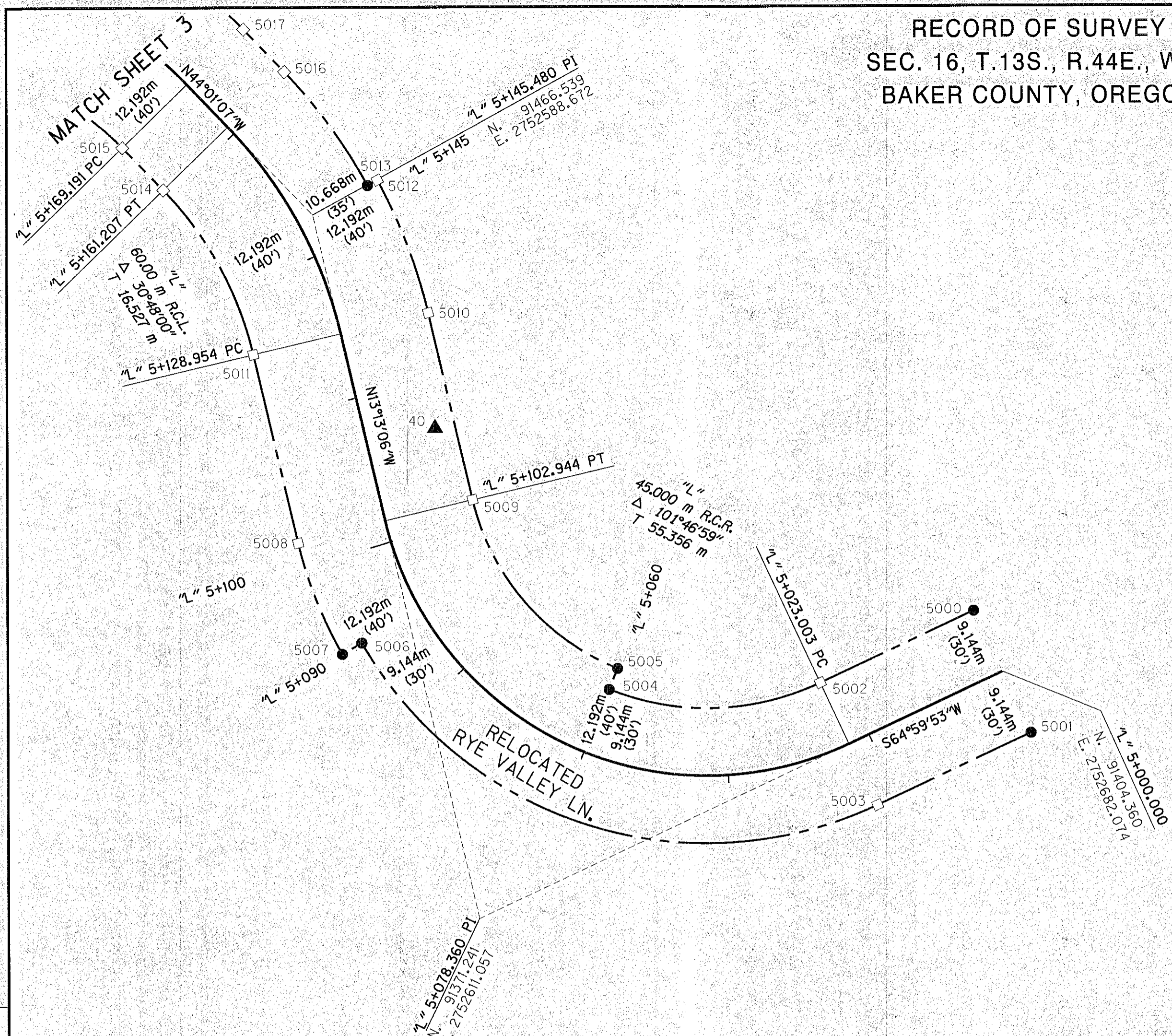
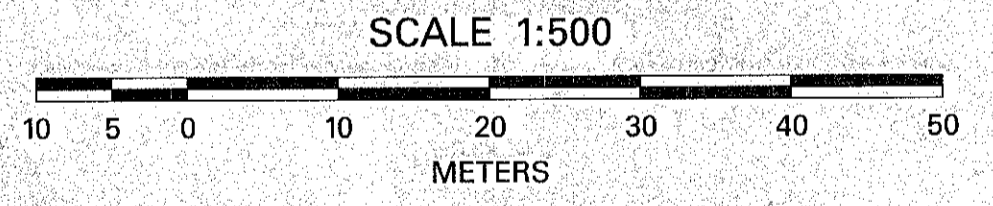


RECORD OF SURVEY  
 SEC. 16, T.13S., R.44E., W.M.  
 BAKER COUNTY, OREGON



**LEGEND**

- SET 16mm (5/8") X 762mm (30") IRON ROD W/YELLOW PLASTIC CAP STAMPED "OBEC PLS 2553", UNLESS OTHERWISE NOTED.
- ▲ PROJECT CONTROL POINT FOUND OR SET AS NOTED.
- CALCULATED POSITION
- N 70°46'22" E MEASURED INFORMATION
- RIGHT OF WAY
- CENTERLINE

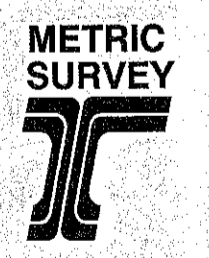


RIGHT OF WAY MONUMENTATION TABLE

PT. NO.	LDP NORTHING	LDP EASTING	STATION	OFFSET	DESCRIPTION
5000	91412.647	2752678.209	"L" 5+000.000	9.144 R	SET 16mm X 762mm IRON ROD W/YPC STAMPED "OBEC PLS 2553"
5001	91396.073	2752685.939	"L" 5+000.000	9.144 L	SET 16mm X 762mm IRON ROD W/YPC STAMPED "OBEC PLS 2553"
5002	91402.924	2752657.361	"L" 5+023.004	9.144 R	CALCULATED POSITION - NO MONUMENT SET
5003	91386.350	2752665.090	"L" 5+023.004	9.144 L	CALCULATED POSITION - NO MONUMENT SET
5004	91402.199	2752628.715	"L" 5+060.000	9.144 R	SET 16mm X 762mm IRON ROD W/YPC STAMPED "OBEC PLS 2553"
5005	91405.024	2752629.862	"L" 5+060.000	12.192 R	SET 16mm X 762mm IRON ROD W/YPC STAMPED "OBEC PLS 2553"
5006	91408.594	2752595.175	"L" 5+090.000	9.144 L	SET 16mm X 762mm IRON ROD W/YPC STAMPED "OBEC PLS 2553"
5007	91407.084	2752592.528	"L" 5+090.000	12.192 L	SET 16mm X 762mm IRON ROD W/YPC STAMPED "OBEC PLS 2553"
5008	91422.342	2752586.530	"L" 5+102.944	12.192 L	CALCULATED POSITION - NO MONUMENT SET
5009	91427.918	2752610.268	"L" 5+102.944	12.192 R	CALCULATED POSITION - NO MONUMENT SET
5010	91453.239	2752604.320	"L" 5+128.954	12.192 R	CALCULATED POSITION - NO MONUMENT SET
5011	91447.663	2752580.582	"L" 5+128.954	12.192 L	CALCULATED POSITION - NO MONUMENT SET
5012	91471.224	2752597.459	"L" 5+145.000	12.192 R	CALCULATED POSITION - NO MONUMENT SET
5013	91470.496	2752596.120	"L" 5+145.000	10.668 R	SET 16mm X 762mm IRON ROD W/YPC STAMPED "OBEC PLS 2553"
5014	91469.951	2752568.420	"L" 5+161.207	12.192 L	CALCULATED POSITION - NO MONUMENT SET
5015	91475.693	2752562.872	"L" 5+169.191	12.192 L	CALCULATED POSITION - NO MONUMENT SET
5016	91485.837	2752584.859	"L" 5+161.207	10.668 R	CALCULATED POSITION - NO MONUMENT SET
5017	91491.578	2752579.311	"L" 5+169.191	10.668 R	CALCULATED POSITION - NO MONUMENT SET

FILED July 23, 2003  
 BAKER COUNTY SURVEYOR  
 SURVEY NO. 13-44-6

NOTE:  
 ALL DIMENSIONS ARE  
 IN METERS EXCEPT  
 AS NOTED.



REGISTERED  
 PROFESSIONAL  
 LAND SURVEYOR

OREGON  
 JULY 21, 1992  
 WAYNE R. DONOVAN  
 2553

RENEWAL DATE: DEC. 31, 2003  
 SIGNED: 07/16/03

**OBEC CONSULTING ENGINEERS**  
 920 COUNTRY CLUB RD., SUITE 100B  
 EUGENE, OREGON 97401  
 TEL. (541) 683-6090 FAX. (541) 683-6576

RIGHT OF WAY MONUMENTATION SURVEY  
 DIXIE CREEK BRIDGE SEC.  
 RELOCATED RYE VALLEY LANE  
 FOR BAKER COUNTY AND  
 OREGON DEPARTMENT OF TRANSPORTATION  
 JULY 2003

APPROVED BY: <u>M.L. ARMSTRONG, C.E. Surveyor</u>	TITLE: _____	BAKER COUNTY, OREGON	SCALE 1:500
DESIGNED: W. DONOVAN	PROJ. NO. 19-66.4F	SHT. 2 OF 3	
DRAWN: AD	CHK'D: MLA	FILE NO. 130685	

07/16/2003 I:\Projects\019\01906604\SURV\CAD\M5\01906604.mnt.dgn