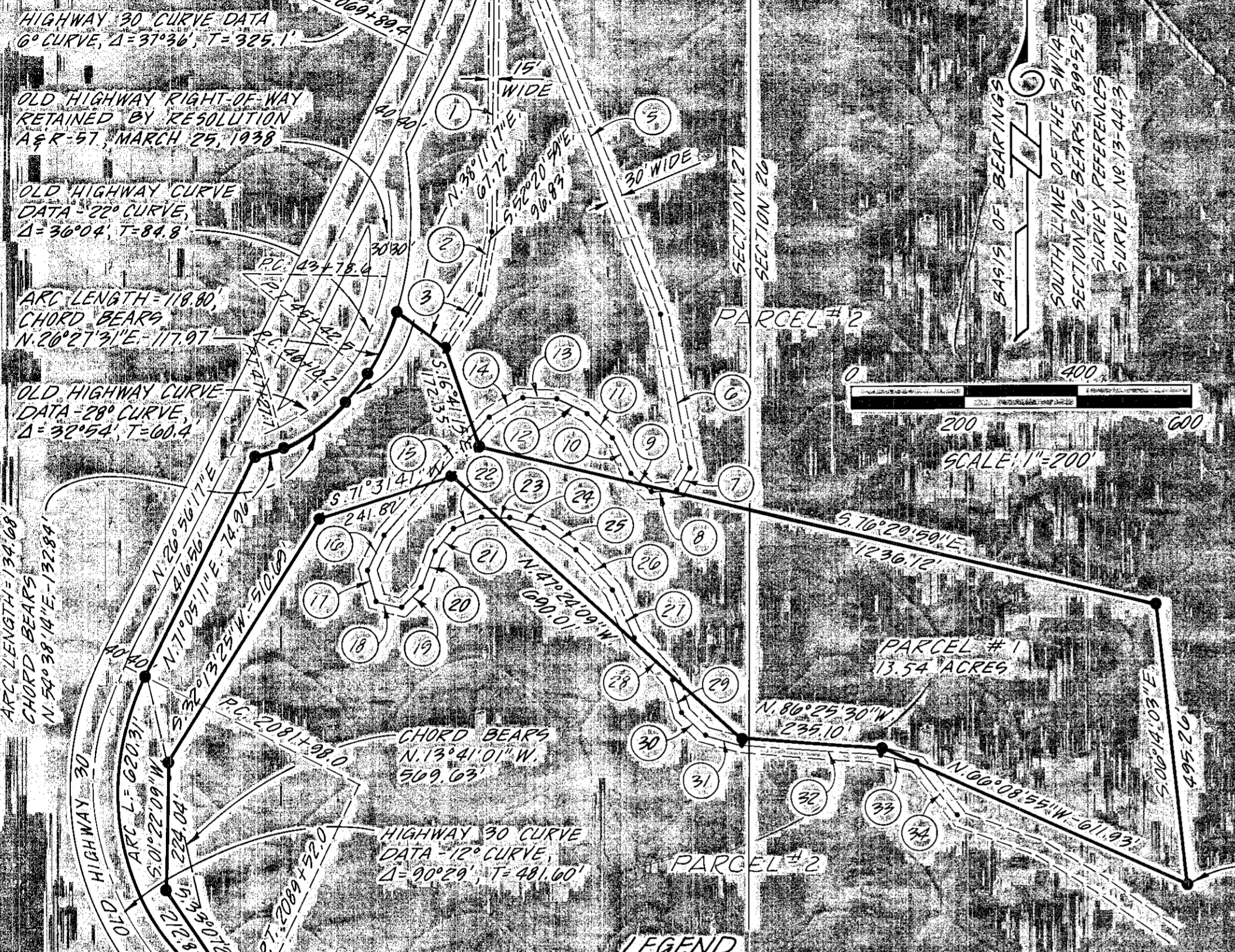


PARTITION PLAT No. P-1991-002

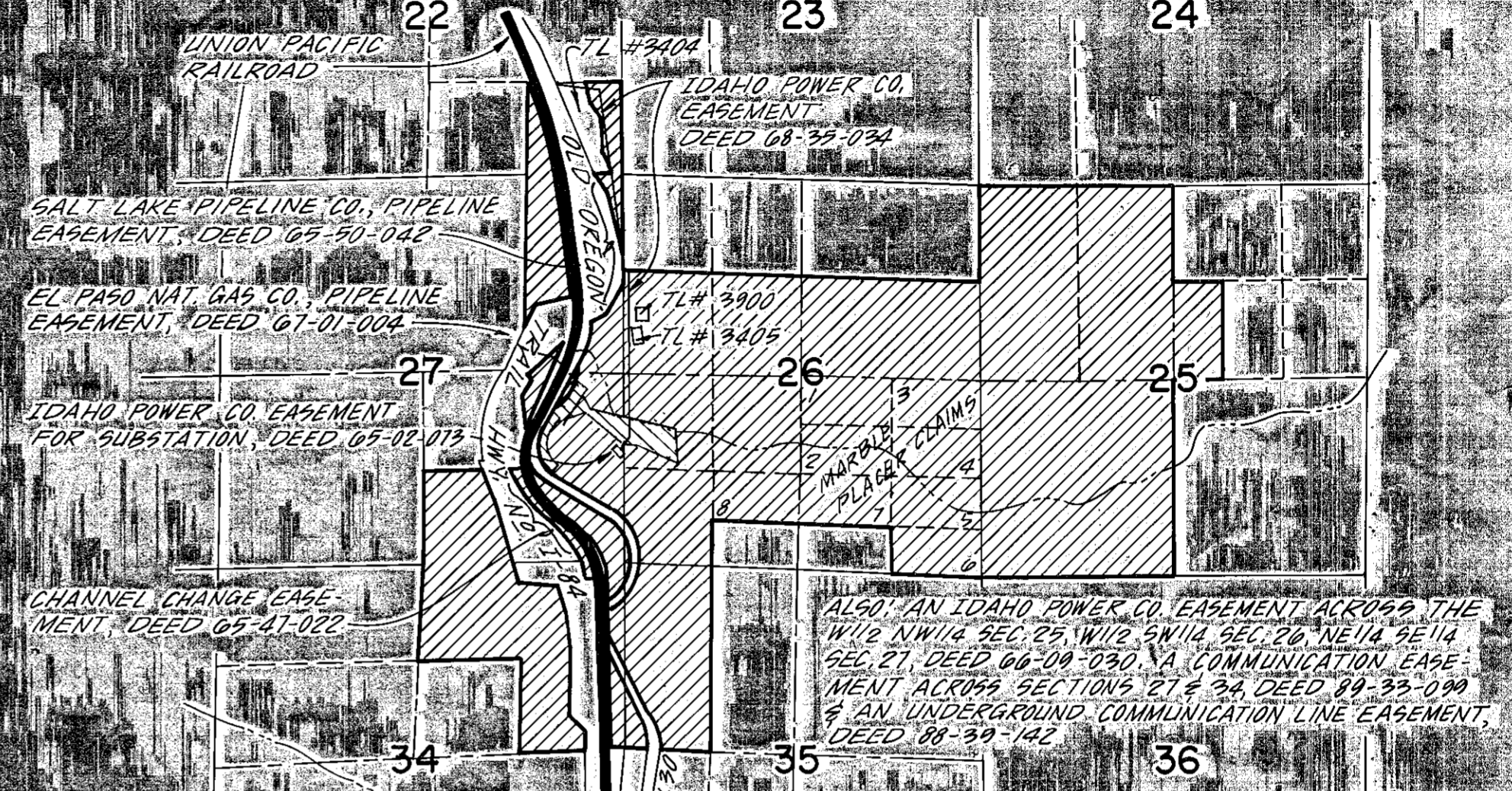
POINT OF BEGINNING FOR 15' WIDE ROAD EASEMENT, BEARS N.08°21'06"W. 3039.07' FROM THE 'S.E. CORNER OF SECTION 27 & 15' LOCATED ON THE EAST EDGE OF THE HWY. RIGHT-OF-WAY

POINT OF BEGINNING FOR 30' WIDE ROAD EASEMENT, BEARS N.08°16'02"W. 3059.58' FROM THE 'S.E. CORNER OF SECTION 27 & 15' LOCATED ON THE EAST EDGE OF THE HWY. RIGHT-OF-WAY

T.13 S. R.44 E.



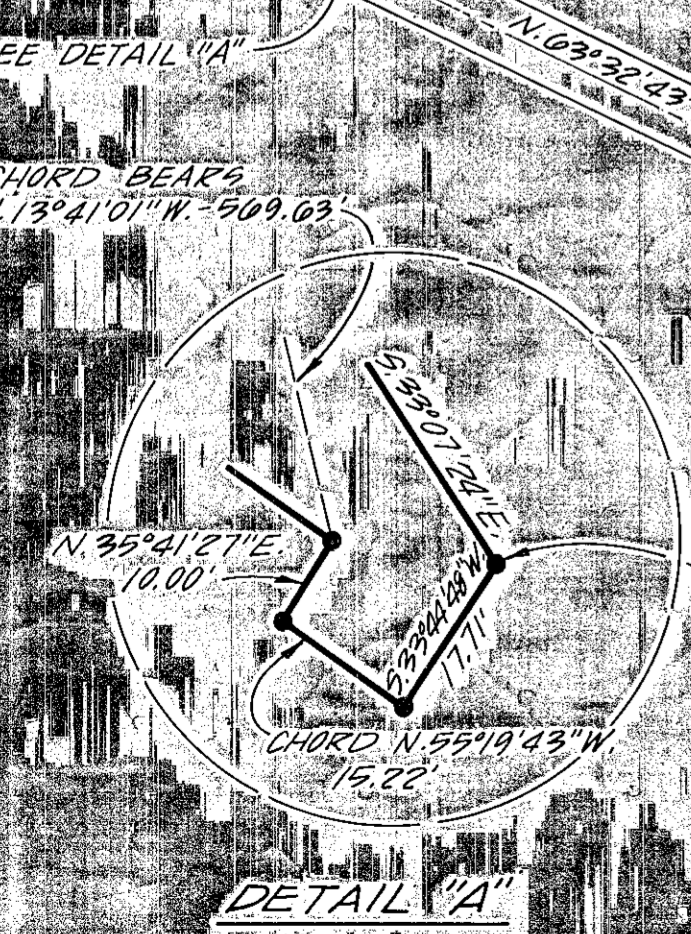
- LEGEND**
- FOUND MONUMENT AS NOTED
 - POINT FOR ROAD EASEMENT DESCRIPTION PURPOSES, POINT NOT MONUMENTED
 - SET 3/8" x 30" REBAR W/ PLASTIC CAP MARKED "HANLEY ENGR. PLG. 1206"



- LEGEND**
- ▨ PARCEL #1
 - ▩ PARCEL #2

VICINITY MAP

Professional Land Surveyor
Thomas O'Fisk
Hanley Engineering
Baker City, Oregon



ROAD EASEMENT COURSES

1	S.01°07'55"W - 526.78	13	N.89°04'20"W - 62.31	25	S.55°28'19"E - 50.30
2	S.11°56'35"W - 111.34	14	S.59°25'32"W - 67.54	26	S.42°27'39"E - 95.15
3	S.33°52'58"W - 115.31	15	S.41°55'53"W - 281.13	27	S.24°49'20"E - 92.41
4	S.31°14'41"E - 73.93	16	S.64°20'51"W - 69.40	28	S.38°34'40"E - 101.91
5	S.20°21'55"E - 681.06	17	S.18°40'47"E - 56.35	29	S.19°32'08"E - 57.54
6	S.10°46'41"E - 272.80	18	S.73°45'52"E - 46.79	30	S.45°58'01"E - 56.99
7	S.26°11'47"W - 45.16	19	N.47°02'08"E - 52.80	31	S.75°10'30"E - 66.93
8	S.85°58'47"W - 46.24	20	N.17°50'45"E - 72.09	32	S.86°25'30"E - 245.30
9	N.47°48'20"W - 50.55	21	N.39°17'10"E - 50.34	33	S.75°44'12"E - 65.48
10	N.26°54'00"W - 68.37	22	N.08°03'17"E - 52.34	34	S.37°29'37"E - 116.12
11	N.44°57'14"W - 62.65	23	S.88°53'30"E - 52.39		
12	N.63°34'10"W - 61.14	24	S.70°21'57"E - 62.82		