

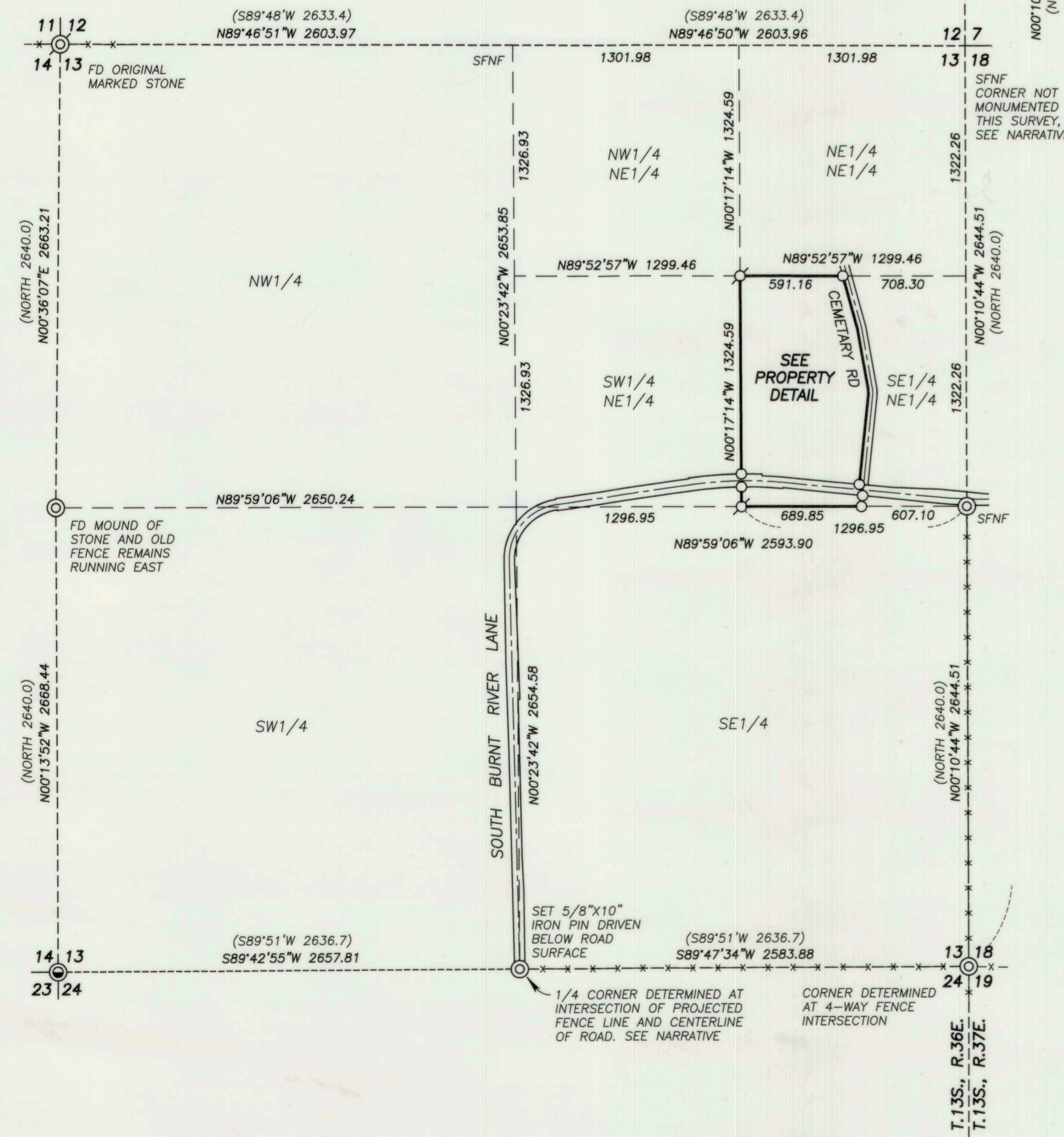


### BASIS OF BEARINGS

GEODETIC NORTH  
DETERMINED BY GPS OBSERVATION TAKEN  
AT THE SW CORNER SECTION 13

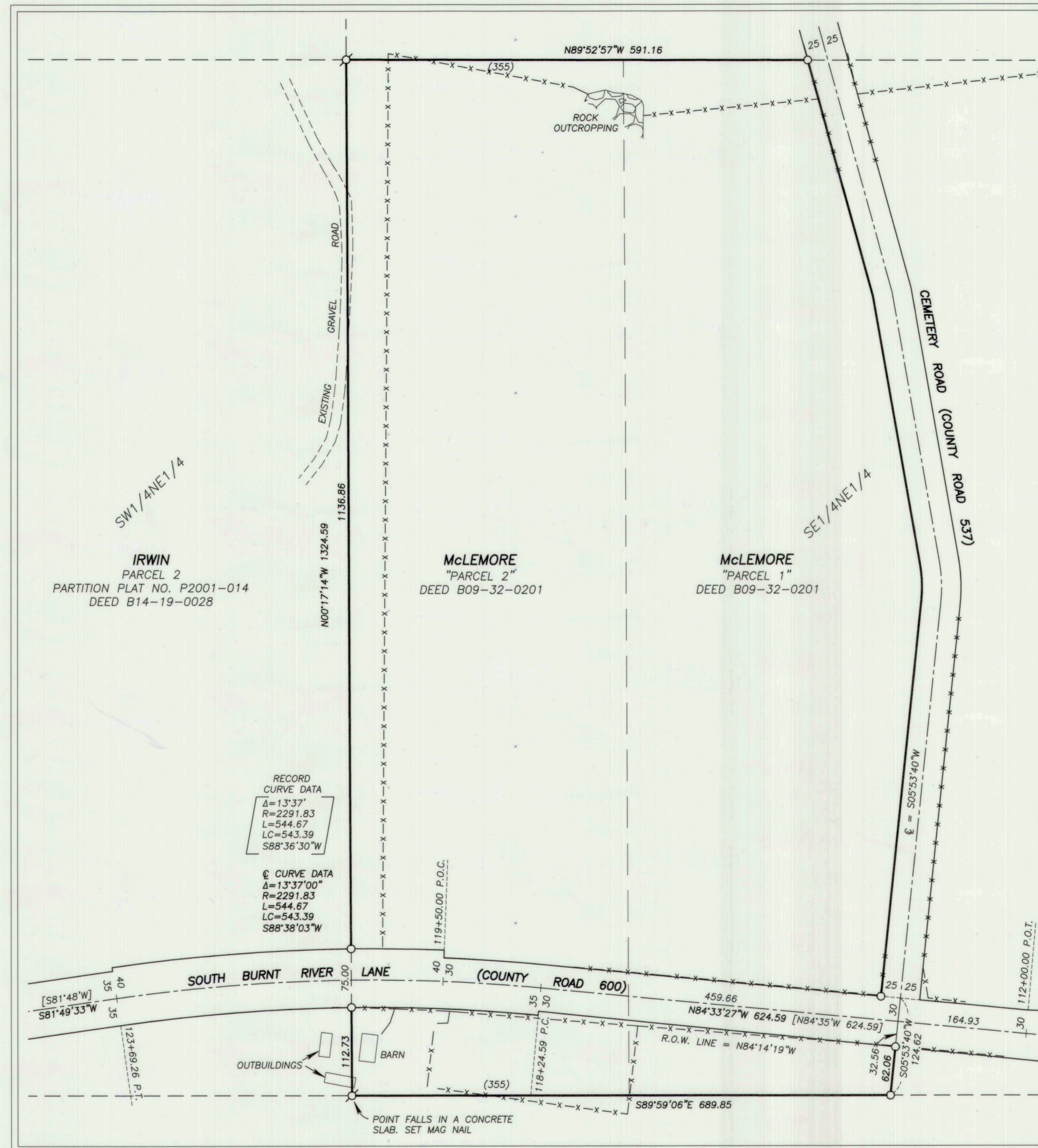
### SECTION SUBDIVISION

SCALE: 1"=600'



### PROPERTY DETAIL

SCALE: 1"=100'



### LEGEND

- FOUND A 1" GALV. IRON PIPE WITH ATTACHED 2" ALUMINUM CAP SET BY JIM HANLEY IN 1971. SEE MONUMENTATION SHEET FILED AS SURVEY NO. 13-36-8
- FOUND 1/2" GALV. IRON PIPE WITH ATTACHED 2 1/2" BRASS CAP SET BY PLS 63148. SEE MONUMENTATION SHEET FILED AS SURVEY NO. 12-36-68
- ⊙ SET 1 1/2" GALV. IRON PIPE WITH ATTACHED 2 1/2" BRASS CAP MARKED "BENCHMARK LAND SURVEYING", AND WITH APPROPRIATE SECTION CORNER DESIGNATION
- ⊙ SET 5/8"x30" IRON PIN (UNLESS OTHERWISE NOTED) WITH ATTACHED 2 1/2" ALUMINUM CAP MARKED "BENCHMARK LAND SURVEYING" AND WITH APPROPRIATE 1/4 CORNER OR SECTION CORNER DESIGNATION
- ⊙ SET 5/8"x30" IRON PIN WITH ATTACHED 2" ALUMINUM CAP MARKED "BENCHMARK LAND SURVEYING" AND WITH APPROPRIATE 1/16 CORNER DESIGNATION (UNLESS OTHERWISE NOTED)
- SET 5/8"x30" IRON PIN WITH ATTACHED YELLOW PLASTIC CAP MARKED "BENCHMARK SURVEYING"
- ( ) G.L.O. RECORD BEARING AND DISTANCE
- [ ] RECORD DIMENSIONS FROM DEED NO. 70-45-009, AND UNRECORDED RIGHT OF WAY SURVEY BY HANLEY ENGINEERING DATED OCTOBER, 1970
- X—X— FENCE LINE
- SFNF MONUMENT SEARCHED FOR, NOT FOUND

### NARRATIVE

THIS SURVEY WAS PERFORMED AT THE REQUEST OF DAVID AND MARCIA McLEMORE. THE PURPOSE OF THIS SURVEY WAS TO MONUMENT THE EXTERIOR CORNERS OF THAT CERTAIN PROPERTY DESCRIBED IN DEED NO. B09-32-0201, BAKER COUNTY DEED RECORDS, WHICH REQUIRED A DEPENDENT RESURVEY AND SUBDIVISION OF SECTION 13.

A SEARCH WAS MADE OF THE AVAILABLE RECORDS PERTAINING TO THIS SURVEY. THE EXTERIOR BOUNDARY OF THE TOWNSHIP AND PARTIAL SUBDIVISION WAS ORIGINALLY SURVEYED BY EUGENE P. MCGORRACK, U.S. DEPUTY SURVEYOR UNDER CONTRACT NO. 398 DATED JULY 2, 1881. A SEARCH OF THE BAKER COUNTY SURVEYOR'S RECORDS PRODUCED MONUMENTATION SHEETS FILED AS SURVEY NO.'S 13-36-8 AND 12-36-68. I ALSO FOUND RELEVANT INFORMATION IN SURVEYOR RECORD BOOK 1, PAGES 28 AND 55.

IN 1970, BAKER COUNTY ACQUIRED ADDITIONAL RIGHT OF WAY FOR THE REALIGNMENT OF SOUTH BURNT RIVER LANE (COUNTY ROAD 600), AS EVIDENCED BY DEED NO. 70-45-009. I FOUND AN UNRECORDED MAP OF A RIGHT OF WAY SURVEY BY HANLEY ENGINEERING DATED OCTOBER, 1970, WHICH APPEARS TO BE THE BASIS FOR THE LEGAL DESCRIPTION IN SAID DEED.

WE MADE A THOROUGH FIELD SEARCH FOR THE CONTROLLING CORNERS OF SECTION 13. EVIDENCE WAS EVALUATED AND CORNER POSITIONS WERE DETERMINED AS FOLLOWS:

NW CORNER SECTION 13:  
I FOUND A STONE MEASURING 22"x12"x5" (RECORD 24"x12"x6") MARKED WITH 4 GROOVES ON ONE FACE AND 1 GROOVE ON AN ADJACENT FACE, IN AN OLD ROCK JACK IN AN EAST-WEST FENCE. I ACCEPT THE POSITION OF THE FOUND STONE FOR THE SECTION CORNER.

WEST 1/4 CORNER SECTION 13:  
THE ORIGINAL MARKED STONE WAS NOT FOUND, BUT I DID FIND A MAN-MADE MOUND OF STONE, APPROXIMATELY 2 FT. DIAMETER. ANCIENT REMAINS OF A FENCE EXTEND EAST FROM THIS LOCATION. THE NORTHING POSITION OF THIS MOUND IS HARMONIOUSLY RELATED TO FOUND MONUMENTS AT THE NW AND SW CORNERS OF SECTION 13. I ACCEPT THE MOUND OF STONE AS THE BEST AVAILABLE EVIDENCE OF THE 1/4 CORNER.

SOUTH 1/4 CORNER SECTION 13:  
THE ORIGINAL MONUMENT WAS NOT FOUND. ACCORDING TO THE FIELD NOTES IN SURVEYOR'S RECORD BOOK 1, PAGE 55, AND THE ASSOCIATED MAP ON PAGE 28, THE OLD COUNTY ROAD RAN TO THE QUARTER CORNER. THIS IS CONSISTENT WITH DEED NO. 70-45-009, WHICH DESCRIBES THE ROAD RUNNING TO THE 1/4 CORNER. FURTHERMORE, THE UNRECORDED HANLEY ENGINEERING MAP FROM 1970 OF THE COUNTY ROAD PROVIDES EVIDENCE THAT THE ALIGNMENT OF THE ROAD REMAINED UNCHANGED IN THIS LOCATION WHEN THE ROAD WAS REALIGNED IN 1970. THEREFORE, THIS CORNER WAS DETERMINED AT THE INTERSECTION OF THE CENTER OF THE EXISTING COUNTY ROAD AND A LONG-ESTABLISHED FENCE LINE RUNNING EAST.

SOUTHEAST CORNER SECTION 13:  
THE ORIGINAL STONE WAS NOT RECOVERED. ALL THE STONES IN THE IMMEDIATE VICINITY HAVE BEEN PLACED IN NEARBY ROCK JACKS. THE INTERSECTION OF LONG ESTABLISHED FENCES RUNNING NORTH, EAST, SOUTH AND WEST IS ACCEPTED AS THE BEST AVAILABLE EVIDENCE OF THE ORIGINAL CORNER LOCATION.

EAST 1/4 CORNER SECTION 13:  
THE ORIGINAL STONE WAS NOT RECOVERED, LIKELY DUE TO THE CLOSE PROXIMITY OF THIS CORNER TO THE COUNTY ROAD. ALTHOUGH THE DESCRIPTION IN DEED NO. 70-45-009 SUGGESTS THE CORNER IS LOCATED IN THE COUNTY ROAD, THE FIELD NOTES IN SURVEYOR'S RECORD BOOK 1, PAGE 55 SUGGESTS OTHERWISE. IN SAID BOOK 1 THE ROAD IS DESCRIBED AS FOLLOWING THE EAST-WEST CENTER LINE OF SECTION 17, T.13S., R.37E., BUT THEN HEADING WEST FROM THE CENTER OF SECTION 17, THE ROAD CLEARLY DEVIATES FROM THE SECTION SUBDIVISION LINES UNTIL THE POINT AT WHICH IT RUNS TO THE SOUTH QUARTER CORNER OF SECTION 13. BY FIELD OBSERVATION, IT IS CLEAR THAT THIS DEVIATION WAS MADE TO FOLLOW A ROUTE OF CONVENIENCE DUE TO TOPOGRAPHY. THEREFORE, WITH A LACK OF LOCAL EVIDENCE OF THE CORNER LOCATION, I DECLARE THIS CORNER LOST, AND REESTABLISH ITS POSITION BY SINGLE PROPORTIONATE MEASUREMENT ALONG THE RANGE LINE.

NORTHEAST CORNER SECTION 13:  
THIS POSITION FALLS IN A PASTURE, WHERE NO EVIDENCE OF THE ORIGINAL CORNER WAS FOUND. I DECLARE THIS CORNER LOST, AND REESTABLISH ITS POSITION BY SINGLE PROPORTIONATE MEASUREMENT ALONG THE RANGE LINE. AT THE RECOMMENDATION OF BILL MOORE, LANDOWNER, WE DID NOT SET A MONUMENT AT THE CORNER LOCATION, DUE TO THE LIKELIHOOD THAT IT WOULD BE DESTROYED BY FUTURE PLOWING. INSTEAD, WE SET TWO REFERENCE MONUMENTS IN A FENCE LINE TO THE EAST. SEE MONUMENTATION SHEET FILED SEPARATELY FOR MORE DETAILS.

EAST 1/4 CORNER SECTION 12:  
THIS POSITION FALLS IN AN AREA HEAVILY DISTURBED BY ROAD AND FENCE CONSTRUCTION. NO EVIDENCE OF THE ORIGINAL CORNER WAS FOUND. I DECLARE THIS CORNER LOST, AND CALCULATE ITS POSITION BY SINGLE PROPORTIONATE MEASUREMENT ALONG THE RANGE LINE.

NORTHEAST CORNER SECTION 12:  
THIS POSITION FALLS IN A PASTURE, WHERE NO EVIDENCE OF THE ORIGINAL CORNER WAS FOUND. I DECLARE THIS CORNER LOST, AND CALCULATE ITS POSITION BY SINGLE PROPORTIONATE MEASUREMENT ALONG THE RANGE LINE.

EAST 1/4 CORNER SECTION 11:  
AFTER A DILIGENT SEARCH, WE FOUND NO REMAINING EVIDENCE OF THE ORIGINAL CORNER. THIS POSITION FALLS ON THE WEST BANK OF AN IRRIGATION DITCH IN AN AREA DISTURBED BY EXCAVATION. I DECLARE THIS CORNER LOST AND CALCULATE ITS POSITION BY SINGLE PROPORTIONATE MEASUREMENT ALONG THE RANGE LINE.

NORTH 1/4 CORNER SECTION 13:  
THE SEARCH AREA FALLS AMONGST PROMINENT CRAGS AND LEDGES, WITH STEEP CHUTES IN BETWEEN. NO TRACE OF THE ORIGINAL CORNER WAS FOUND. I DECLARE THIS CORNER LOST, AND REESTABLISH ITS POSITION BY SINGLE PROPORTIONATE MEASUREMENT. THIS CORNER WAS NOT MONUMENTED DURING THIS SURVEY, AS IT FALLS ON THE FACE OF A CLIFF WHERE SETTING A MONUMENT IS IMPRACTICABLE.

SECTION 13 WAS THEN SUBDIVIDED WITH REFERENCE TO THE 2009 B.L.M. MANUAL OF SURVEYING INSTRUCTIONS. FIELD MEASUREMENTS WERE MADE TO LOCATE THE EXISTING CENTERLINE AND RIGHT OF WAY FENCES OF THE SOUTH BURNT RIVER LANE. THE RECORD ALIGNMENT FROM DEED NO. 70-45-009 WAS THEN ROTATED 0°01'33" CLOCKWISE TO CONFORM TO EXISTING CONDITIONS.

I ALSO MADE FIELD MEASUREMENTS TO LOCATE THE RIGHT OF WAY FENCES FOR CEMETERY ROAD, WHICH INDICATE A RIGHT OF WAY WIDTH OF 50 FEET. THE DESCRIPTION FOR THE McLEMORE PROPERTY, AS WELL AS THE ADJOINING DEED TO THE EAST CALL THE COUNTY ROAD (CEMETERY ROAD) AS THE DIVIDING LINE. HOWEVER, CEMETERY ROAD ENDS AT ITS INTERSECTION WITH SOUTH BURNT RIVER LANE, WHICH IS NORTH OF THE SOUTH BOUNDARY OF BOTH PROPERTIES. THEREFORE, TO DETERMINE THE SOUTHEAST CORNER OF THE McLEMORE PROPERTY, THE BEARING OF THE SOUTHERLY-MOST TANGENT OF THE CENTERLINE OF CEMETERY ROAD IS EXTENDED TO THE SOUTH LINE OF THE SE1/4NE1/4. THIS TANGENT WAS DETERMINED BY MEASURING 25 FEET PERPENDICULAR FROM THE EASTERLY WOODEN RIGHT OF WAY FENCE.

DURING THE COURSE OF THIS SURVEY, THREE ENCROACHMENTS WERE NOTED. THERE IS A GRAVEL ACCESS ROAD THAT ENCLOSES PARTIALLY OVER THE WEST LINE, AND THERE ARE TWO BUILDINGS WHICH ENCLOSE OVER THE SOUTH AND WEST LINES.

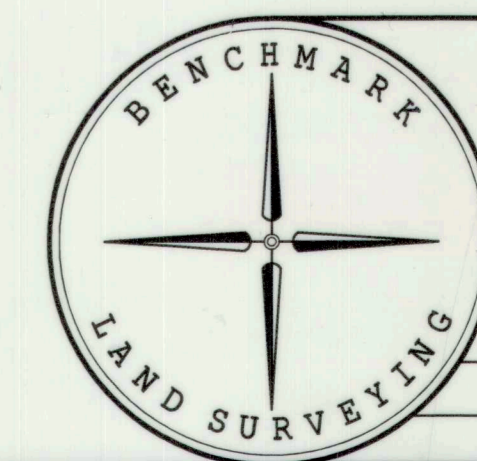
NEW MONUMENTS WERE SET ACCORDING TO THE EVIDENCE FOUND AND THE PROCEDURES OUTLINED HEREIN. SEE MONUMENTATION SHEETS FILED SEPARATELY FOR MORE DETAILED INFORMATION ABOUT MONUMENTS SET AND ACCESSORIES ESTABLISHED AT SECTION CORNERS, 1/4 CORNERS AND 1/16 CORNERS.

### REFERENCES

- RECORD MAP OF SURVEY NO.'S 12-36-68, 13-36-8 & 13-36-42
- DEED RECORD INSTRUMENT NO.'S 70-45-009, B0022-0252, B09-32-0202, B13-13-0245, B14-09-0224 & B14-19-0028
- LAND PARTITION PLAT NO. P2001-014
- BAKER COUNTY SURVEYOR RECORD BOOK 1, PAGES 28 AND 55
- UNRECORDED MAP OF COUNTY ROAD SURVEY BY HANLEY ENGINEERING DATED OCTOBER, 1970
- GENERAL LAND OFFICE FIELD NOTES

REGISTERED  
PROFESSIONAL  
LAND SURVEYOR

JASON L. HATFIELD  
OREGON  
NOVEMBER 30, 2007  
JASON L. HATFIELD  
#69454  
EXPIRES: 6/30/2017



BENCHMARK LAND SURVEYING  
217 N. CANYON BLVD. JOHN DAY, OREGON  
1207 DEWEY AVE. BAKER CITY, OREGON  
541-575-1251 ~ 541-523-5852

MAP OF SURVEY  
A DEPENDENT RESURVEY AND SUBDIVISION OF  
SECTION 13, T.13S., R.36E., W.M.,  
BAKER COUNTY, OREGON

SURVEYED FOR	DAVID McLEMORE
SURVEYED BY	JLH & MCS
DATE	4/28/2017
SCALE: AS SHOWN	DRAWN BY: JLH

FILED May 9, 2017  
BAKER COUNTY SURVEYOR  
SURVEY NO. 13-36-85  
13-37-32