

# Property Line Adjustment Survey

Of the MacNees Tract and part of the Sullivan Tract

Situated in the SE1/4 NE1/4 Section 17 and

the SW1/4 NW1/4 Section 16

T. 13 S. R. 37 E., W.M.

City of Unity

Baker County, Oregon

June 10, 2009



Scale 1"=60'

## Basis of Bearing

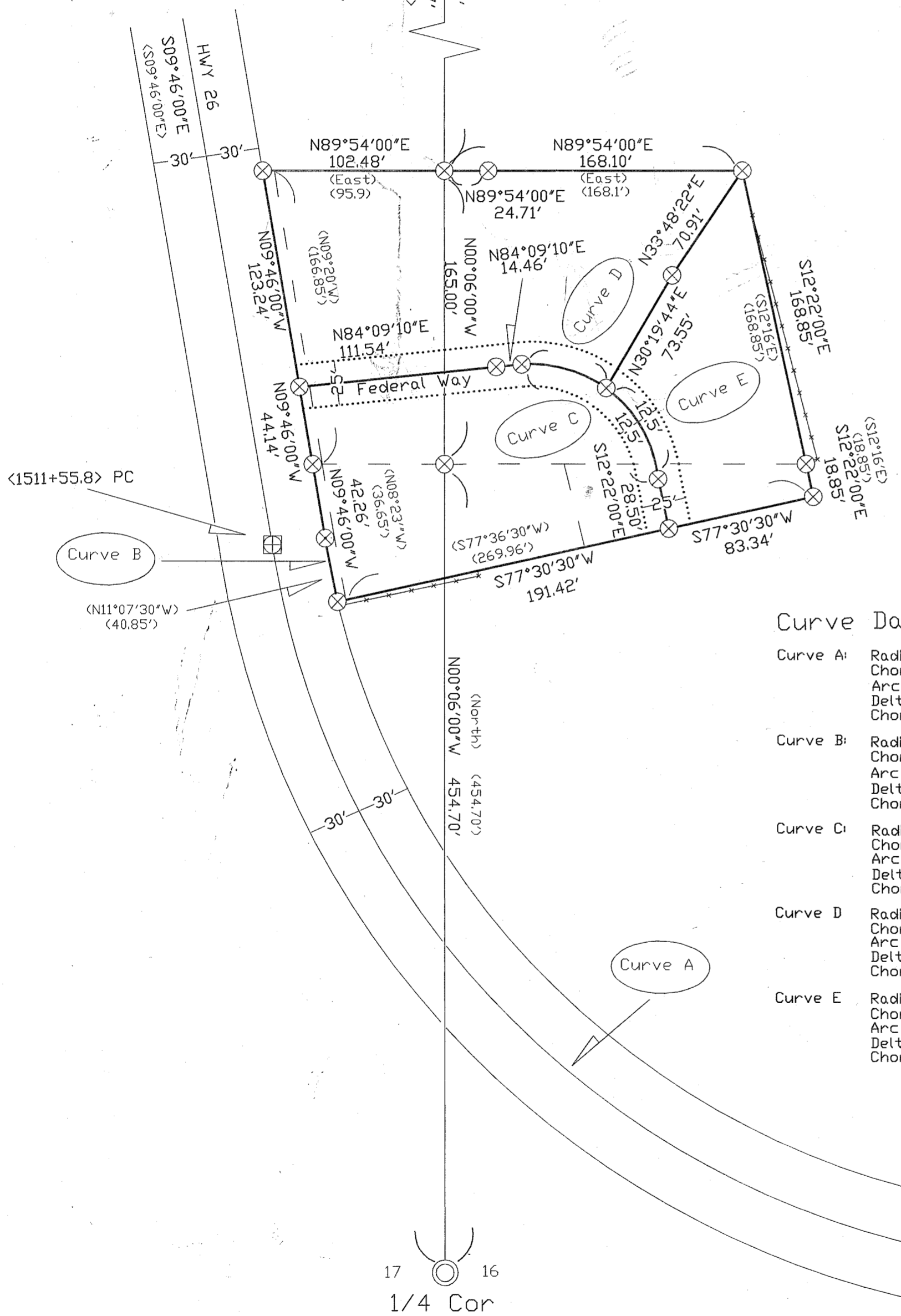
North Line of Baker Co. Survey #13-37-21

## Legend

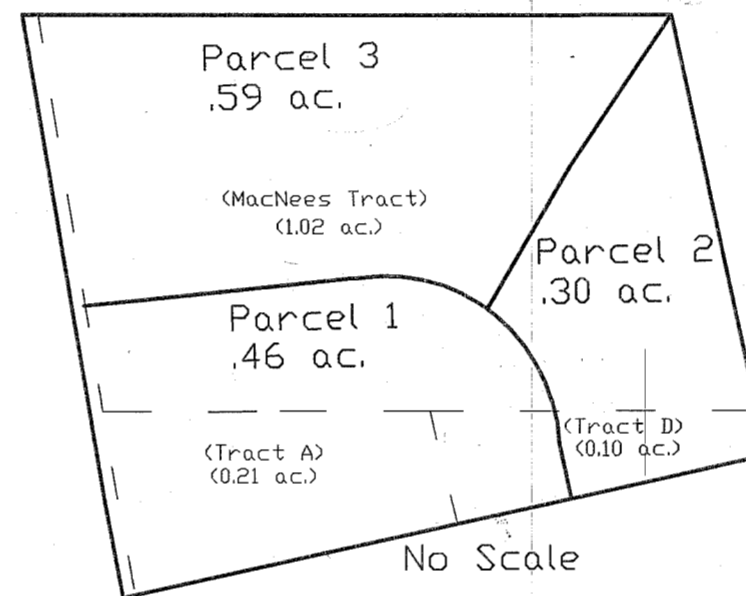
- Lot lines established this survey
- ⊗ 5/8"X30" Iron Pin set this survey with orange pastic cap marked CJ Stout, PLS 2632
- ⊙ Previously set 5/8" IP, unrecorded, accepted and recorded this survey
- ⊠ Highway 26 control; projected not set
- ⊠ 3"X30" aluminum pipe with 3 1/2" cap set this survey as a witness corner
- Baker County Survey 13-37-1 lot lines
- \*—\*—\* Encroaching Fence
- << >> Original GLO
- < > Highway Strip Map 2B-23-19
- < > Baker County Survey 13-37-1
- // // Baker County Survey 13-37-2
- < > Baker County Survey 13-37-3
- [ ] Baker County Survey 13-37-20
- ..... Proposed easement

## References

- Baker County Survey 13-37-1
- Baker County Survey 13-37-2
- Baker County Survey 13-37-3
- Baker County Survey 13-37-20
- Baker County Survey 13-37-21
- Oregon State Highway strip map 2B-23-19
- Baker County Deed recorded in Book 173 Page 1490-91
- Baker County Deed recorded in Book 174 Page 880



Map of Lot Line Adjustments and Areas



### Curve Data:

- Curve A: Radius: 477.47'  
Chord Length: 622.08'  
Arc Length: 677.50'  
Delta: 81°18'00"  
Chord Brg: S49°16'30"E
- Curve B: Radius: 447.47'  
Chord Length: 36.38'  
Arc Length: 36.39'  
Delta: 04°39'34"  
Chord Brg: S11°01'57"E
- Curve C: Radius: 71.58'  
Chord Length: 100.46'  
Arc Length: 111.35'  
Delta: 89°07'48"  
Chord Brg: S50°05'35"E
- Curve D: Radius: 71.58'  
Chord Length: 49.56'  
Arc Length: 50.61'  
Delta: 40°30'33"  
Chord Brg: S74°24'18"E
- Curve E: Radius: 71.58'  
Chord Length: 58.94'  
Arc Length: 60.74'  
Delta: 48°37'15"  
Chord Brg: S29°50'13"E



Renewal Date 6/30/2010