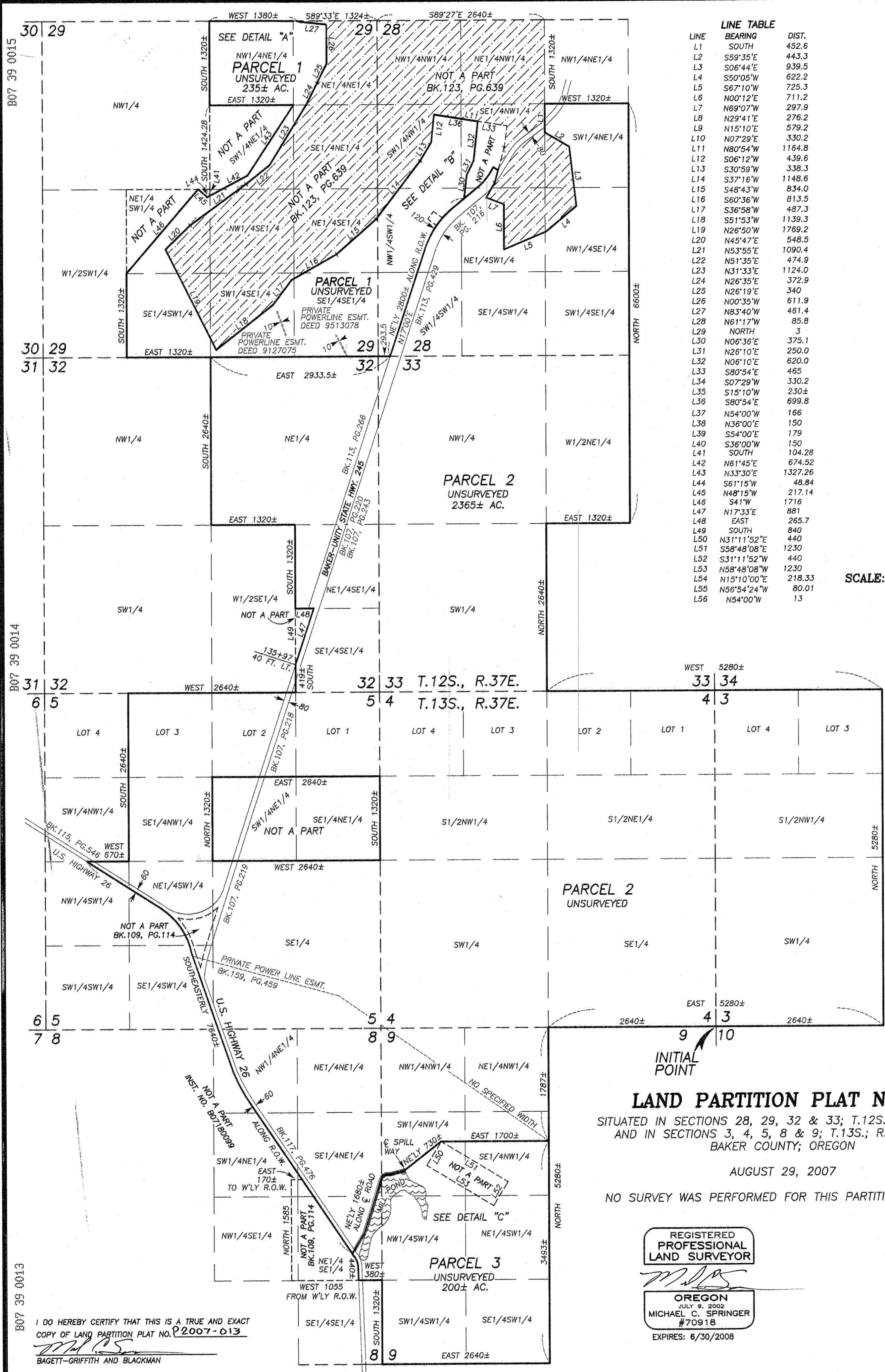


LINE TABLE

LINE	BEARING	DIST.
L1	SOUTH	452.6
L2	S59°35'E	443.3
L3	S06°44'E	939.5
L4	S50°05'W	622.2
L5	S67°10'W	725.3
L6	N00°12'E	711.2
L7	N69°07'W	297.9
L8	N29°41'E	276.2
L9	N15°10'E	579.2
L10	N07°29'E	330.2
L11	N80°54'W	1164.8
L12	S06°12'W	439.6
L13	S30°59'W	338.3
L14	S37°16'W	1148.6
L15	S48°43'W	834.0
L16	S60°36'W	813.5
L17	S36°58'W	487.3
L18	S51°53'W	1139.3
L19	N26°50'W	1769.2
L20	N45°47'E	548.5
L21	N53°55'E	1090.4
L22	N51°35'E	474.9
L23	N31°33'E	1124.0
L24	N26°35'E	372.9
L25	N26°19'E	340
L26	N00°35'W	611.9
L27	N83°40'W	461.4
L28	N61°17'W	85.8
L29	NORTH	3
L30	N06°36'E	375.1
L31	N26°10'E	250.0
L32	N06°10'E	620.0
L33	S80°54'E	465
L34	S07°29'W	330.2
L35	S15°10'W	230.2
L36	S80°54'E	699.8
L37	N54°00'W	166
L38	N36°00'E	150
L39	S54°00'E	179
L40	S36°00'W	150
L41	SOUTH	104.28
L42	N61°45'E	674.52
L43	N33°30'E	1327.26
L44	S61°15'W	48.84
L45	N48°15'W	217.14
L46	S41°W	1716
L47	N17°33'E	881
L48	EAST	265.7
L49	SOUTH	840
L50	N31°11'52"E	440
L51	S58°48'08"E	1230
L52	S31°11'52"W	440
L53	N58°48'08"W	1230
L54	N15°10'00"E	218.33
L55	N56°54'24"W	80.01
L56	N54°00'W	13



SCALE: 1" = 1000'



LAND PARTITION PLAT NO. P2007-013

SITUATED IN SECTIONS 28, 29, 32 & 33; T.12S.; R.37E.; W.M.
AND IN SECTIONS 3, 4, 5, 8 & 9; T.13S.; R.37E.; W.M.;
BAKER COUNTY, OREGON

AUGUST 29, 2007

NO SURVEY WAS PERFORMED FOR THIS PARTITION PROCESS

REGISTERED
PROFESSIONAL
LAND SURVEYOR

MCS
OREGON
JULY 9, 2002
MICHAEL C. SPRINGER
#70918
EXPIRES: 6/30/2008

I DO HEREBY CERTIFY THAT THIS IS A TRUE AND EXACT
COPY OF LAND PARTITION PLAT NO. P2007-013
MCS
BAGETT-GRIFFITH AND BLACKMAN

FILED September 24, 2007
BAKER COUNTY SURVEYOR
SURVEY NO. 12-37-77 MP
13-37-24 MP