

**NARRATIVE OF SURVEY**

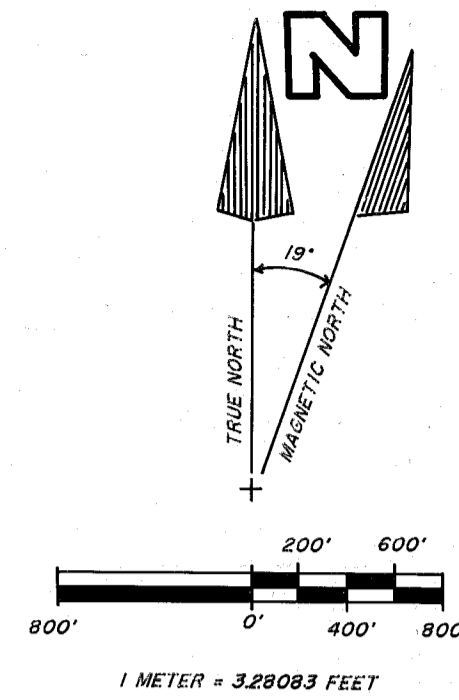
THIS DEPENDENT RESURVEY AND SUBDIVISION OF SECTIONS 1 AND 2, T14S, R36E, SECTION 36, T13S, R36E, AND SECTION 31, T13S, R37E, WAS PERFORMED BY WILLIAM R. WELLS AS PART OF THE B. HANLEY/B. WELLS JOINT VENTURE CONTRACT WITH THE USDA-FOREST SERVICE. THE PURPOSE OF THE SURVEY WAS TO MONUMENT CERTAIN CONTROLLING CORNERS, AS SHOWN ON THIS PLAT, AND TO POST LINES DEFINING THE NATIONAL FOREST BOUNDARY.

FIELD WORK WAS DONE WITH A 2 MAN CREW USING A 20 SECOND THEODOLITE AND INFRA-RED DISTANCE MEASURING EQUIPMENT. AS INDICATED ELSEWHERE ON THIS PLAT, BEARINGS ARE BASED ON SOLAR OBSERVATION 50 FEET WEST OF THE N.E. CORNER OF SECTION 1, T14S, R36E. FOREST BOUNDARY LINES WERE LOCATED BY OFFSET MEASUREMENT FROM SURVEY CONTROL POINTS AND ARE MARKED WITH 6 FOOT STEEL FENCE POSTS SPACED AT APPROXIMATELY 200 FOOT INTERVALS WITH USFS BOUNDARY SIGNS 54-2 ATTACHED.

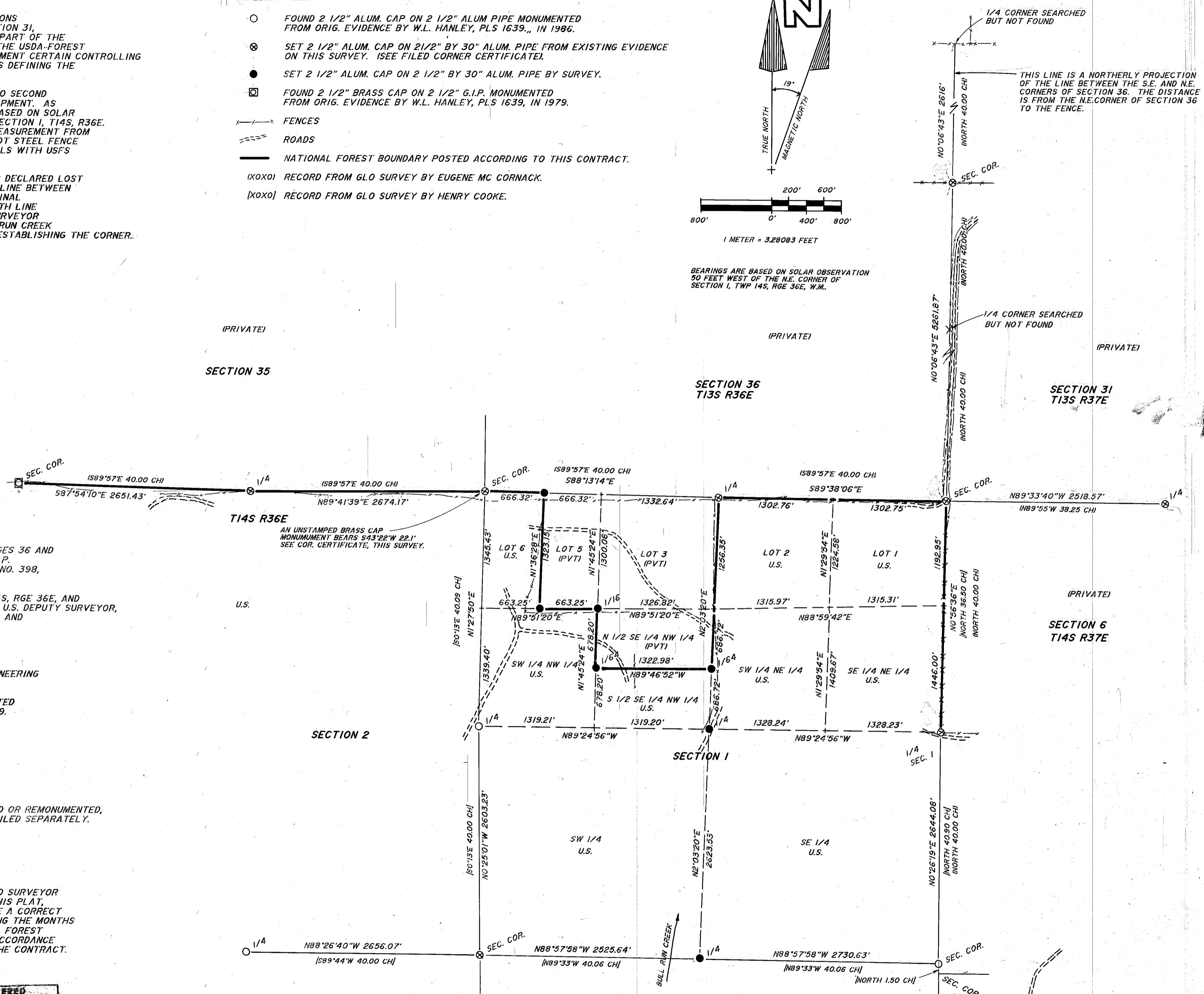
THE SOUTH 1/4 CORNER OF SECTION 1, T14S, R36E, WAS DECLARED LOST AFTER DILIGENT SEARCH, AND WAS REESTABLISHED ON LINE BETWEEN THE S.W. AND S.E. CORNERS OF SECTION 1, AT THE ORIGINAL RECORD DISTANCE EAST OF BULL RUN CREEK. THE SOUTH LINE OF SECTION 1 IS VERY STEEP AND RUGGED AND THIS SURVEYOR BELIEVES THAT UTILIZING THE RECORD CALL TO BULL RUN CREEK RESULTS IN THE MOST SATISFACTORY METHOD FOR REESTABLISHING THE CORNER.

**LEGEND**

- FOUND 2 1/2" ALUM. CAP ON 2 1/2" ALUM PIPE MONUMENTED FROM ORIG. EVIDENCE BY W.L. HANLEY, PLS 1639, IN 1986.
- ⊗ SET 2 1/2" ALUM. CAP ON 2 1/2" BY 30" ALUM. PIPE FROM EXISTING EVIDENCE ON THIS SURVEY. (SEE FILED CORNER CERTIFICATE).
- SET 2 1/2" ALUM. CAP ON 2 1/2" BY 30" ALUM. PIPE BY SURVEY.
- ⊠ FOUND 2 1/2" BRASS CAP ON 2 1/2" G.I.P. MONUMENTED FROM ORIG. EVIDENCE BY W.L. HANLEY, PLS 1639, IN 1979.
- FENCES
- ROADS
- NATIONAL FOREST BOUNDARY POSTED ACCORDING TO THIS CONTRACT.
- (XOXO) RECORD FROM GLO SURVEY BY EUGENE MC CORNACK.
- (XOXO) RECORD FROM GLO SURVEY BY HENRY COOKE.



BEARINGS ARE BASED ON SOLAR OBSERVATION 50 FEET WEST OF THE N.E. CORNER OF SECTION 1, TWP 14S, RGE 36E, W.M.



**HISTORY OF SURVEYS**

TOWNSHIP LINES OF TOWNSHIPS 13 AND 14 SOUTH, RANGES 36 AND 37 EAST, W.M., WERE ORIGINALLY SURVEYED BY EUGENE P. MC CORNACK, U.S. DEPUTY SURVEYOR, UNDER CONTRACT NO. 398, DATED JULY 2, 1881.

RETRACEMENT OF THE EAST LINE OF SECTION 1, TWP 14S, RGE 36E, AND SUBDIVISION OF SECTION 1 WAS DONE BY HENRY COOKE, U.S. DEPUTY SURVEYOR, UNDER CONTRACT NOS 427 AND 512, DATED DEC. 15, 1881, AND AUG. 23, 1884, RESPECTIVELY.

A SUPPLEMENTAL PLAT WAS APPROVED FOR LOT 4 OF SECTION 1, TWP 14S, RGE 36E, W.M., ON MAY 24, 1918.

CERTAIN SURVEYS WERE MADE IN 1952 BY HANLEY ENGINEERING DURING THE BULL RUN MINE SURVEY, MAP NO. 14-36-1.

IN 1979 AND 1986, CERTAIN CORNERS WERE REMONUMENTED FROM EXISTING EVIDENCE BY WILLIAM HANLEY, PLS 1639.

**NOTES**

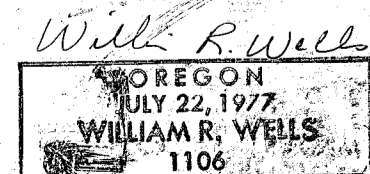
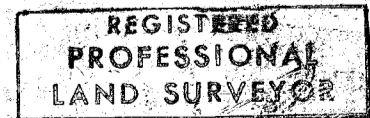
FOR ADDITIONAL INFORMATION ON CORNERS MONUMENTED OR REMONUMENTED, SEE RECORD OF LAND CORNER MONUMENTATION FORMS FILED SEPARATELY.

FIELD BOOK REFERENCE: FIELD BOOKS 4 AND 6 OF THE P.S. CADASTRAL SURVEY.

**SURVEYOR'S CERTIFICATE**

I, WILLIAM R. WELLS, A REGISTERED PROFESSIONAL LAND SURVEYOR IN THE STATE OF OREGON, DO HEREBY CERTIFY THAT THIS PLAT, AND THE CORNER CERTIFICATES FILED SEPARATELY, ARE A CORRECT REPRESENTATION OF A SURVEY PERFORMED BY ME DURING THE MONTHS OF JUNE AND JULY, 1987, AT THE REQUEST OF THE USDA, FOREST SERVICE. SAID SURVEY AND PLAT WERE PREPARED IN ACCORDANCE WITH OREGON STATUTES AND WITH THE ARTICLES OF THE CONTRACT.

*William R. Wells*  
WILLIAM R. WELLS  
OREGON LICENSE NO. 1106



**RECORD OF SURVEY PLAT**  
P.S. CADASTRAL SURVEY, C.N. 53-04HI-6-0054N  
PERFORMED FOR THE USDA FOREST SERVICE  
WALLOWA WHITMAN NATIONAL FOREST

SECTIONS 1 AND 2, T14S, R36E, SECTION 36, T13S, R36E, SECTION 31, T13S, R37E, W.M., BAKER COUNTY, OREGON.

SURVEYED BY: W.R. WELLS  
P.O. BOX 1696, PENDLETON, OR. PH: 276-6362  
SURVEYED IN JUNE AND JULY 1987.

FILED 9-28-87

BAKER COUNTY SURVEYOR

SURVEY NO. 13-36-83

13-37-12

14-36-33

14-37-33A