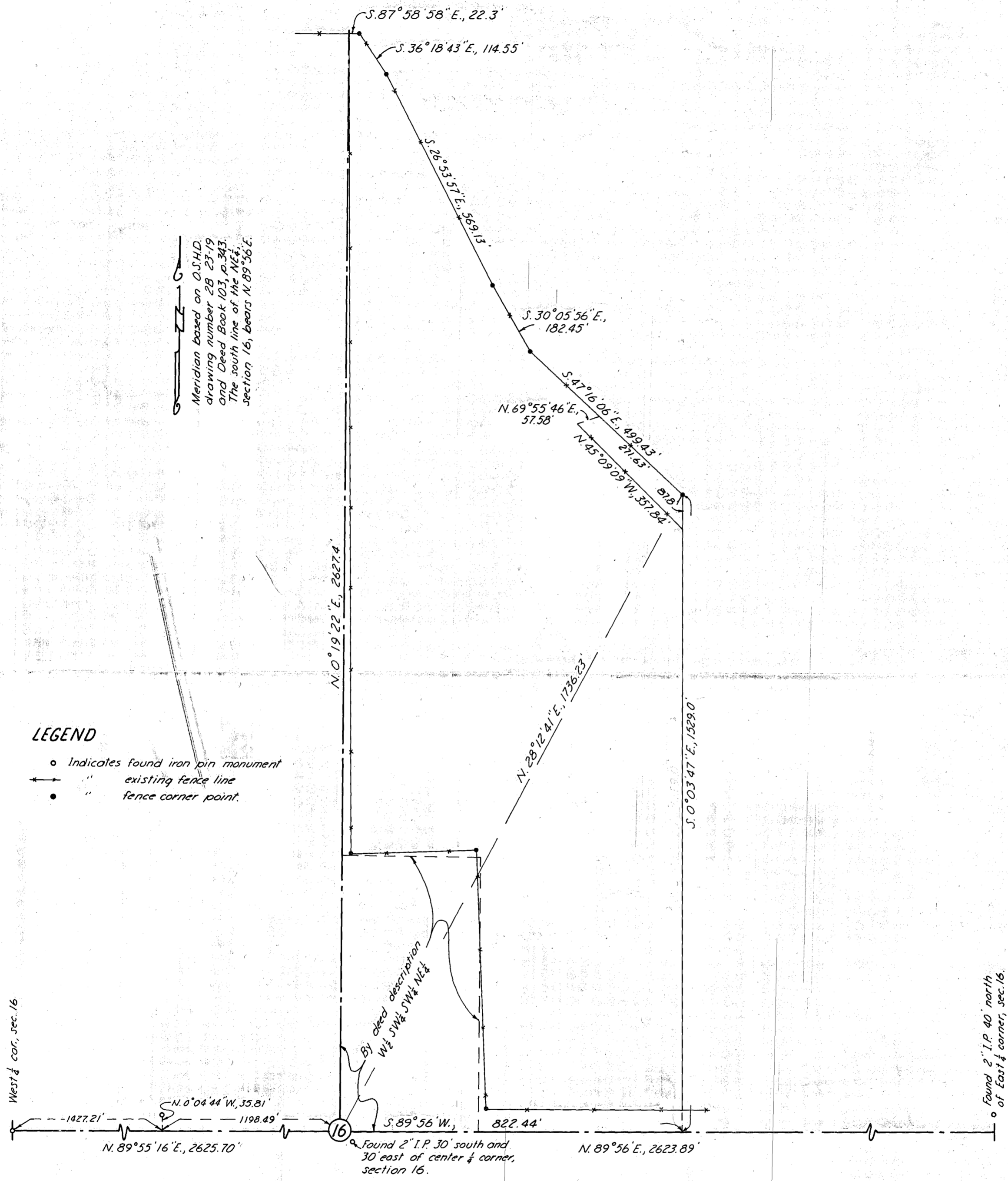


Meridian based on O.S.H.D. drawing number 28 23-19 and Deed Book 103, p. 343. The south line of the NE 1/4 section 16, bears N. 89° 56' E.

LEGEND

- Indicates found iron pin monument
- existing fence line
- " fence corner point.



West 1/2 cor., sec. 16

Found 2" I.P. 40' north of East 1/4 corner, sec. 16.

MAP OF SURVEY
A PARCEL IN THE W 1/2 OF THE NE 1/4
SECTION 16, T.13S., R.37E., W.M.

FILED Oct. 18, 1976
 BAKER COUNTY SURVEYOR
 SURVEY NO. 13-37-4

Surveyed Aug. 20 and Sept. 30, 1976
 Scale 1" = 200'
 For Warren Friend



M-15-31