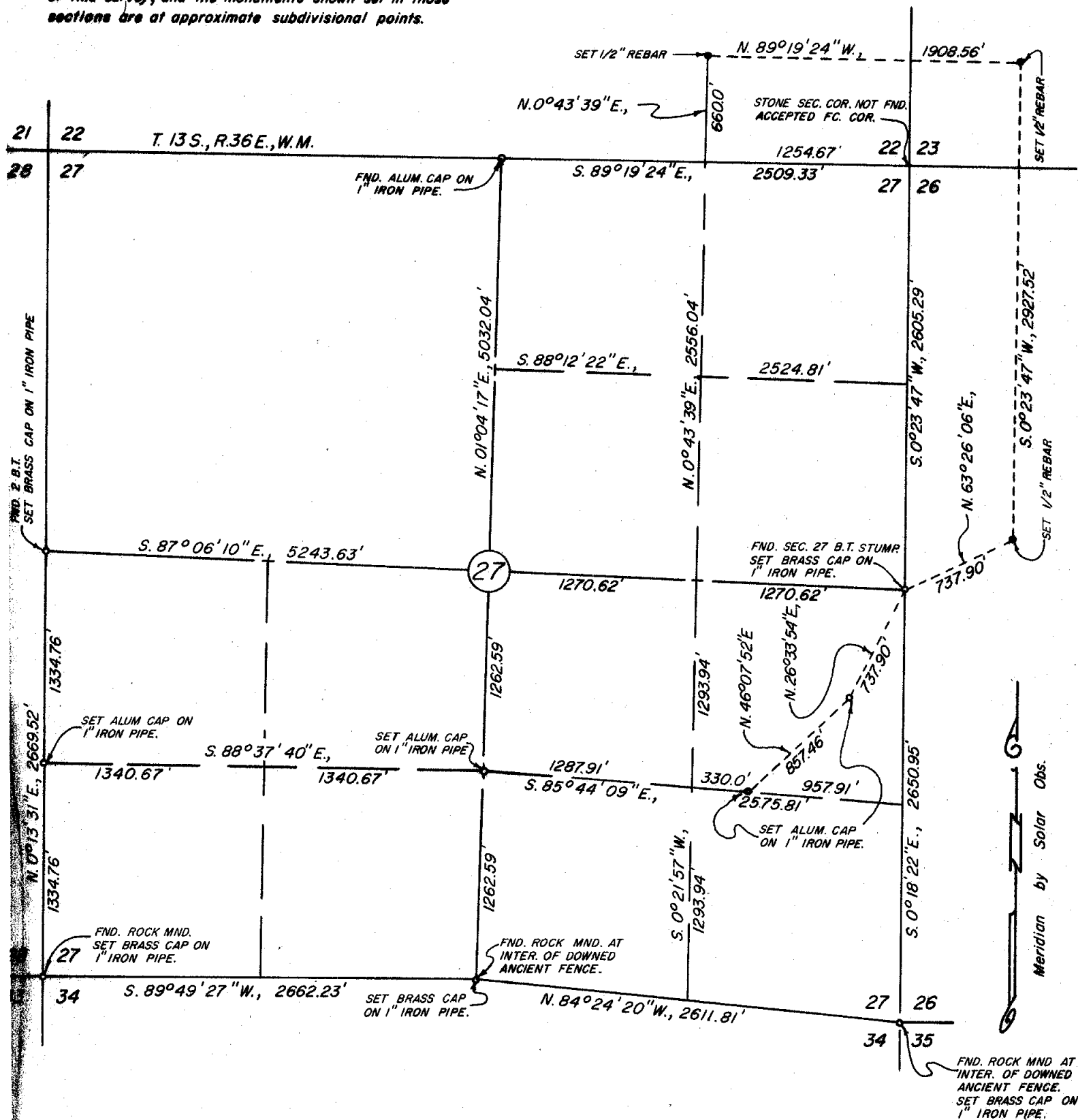


Sections 22, 23 and 26 not subdivided for the purpose of this survey, and the monuments shown set in those sections are at approximate subdivisional points.



# MAP OF SURVEY PARTIAL SUBDIVISION OF SECTION 27 T.13S., R.36E., W.M.

For Burnt River Irrigation District

Dec. 11 to 29, 1975

April 30 & May 3, 1976

Scale 1" = 800'

5-4-76

SURVEY NO. 13-36-9

