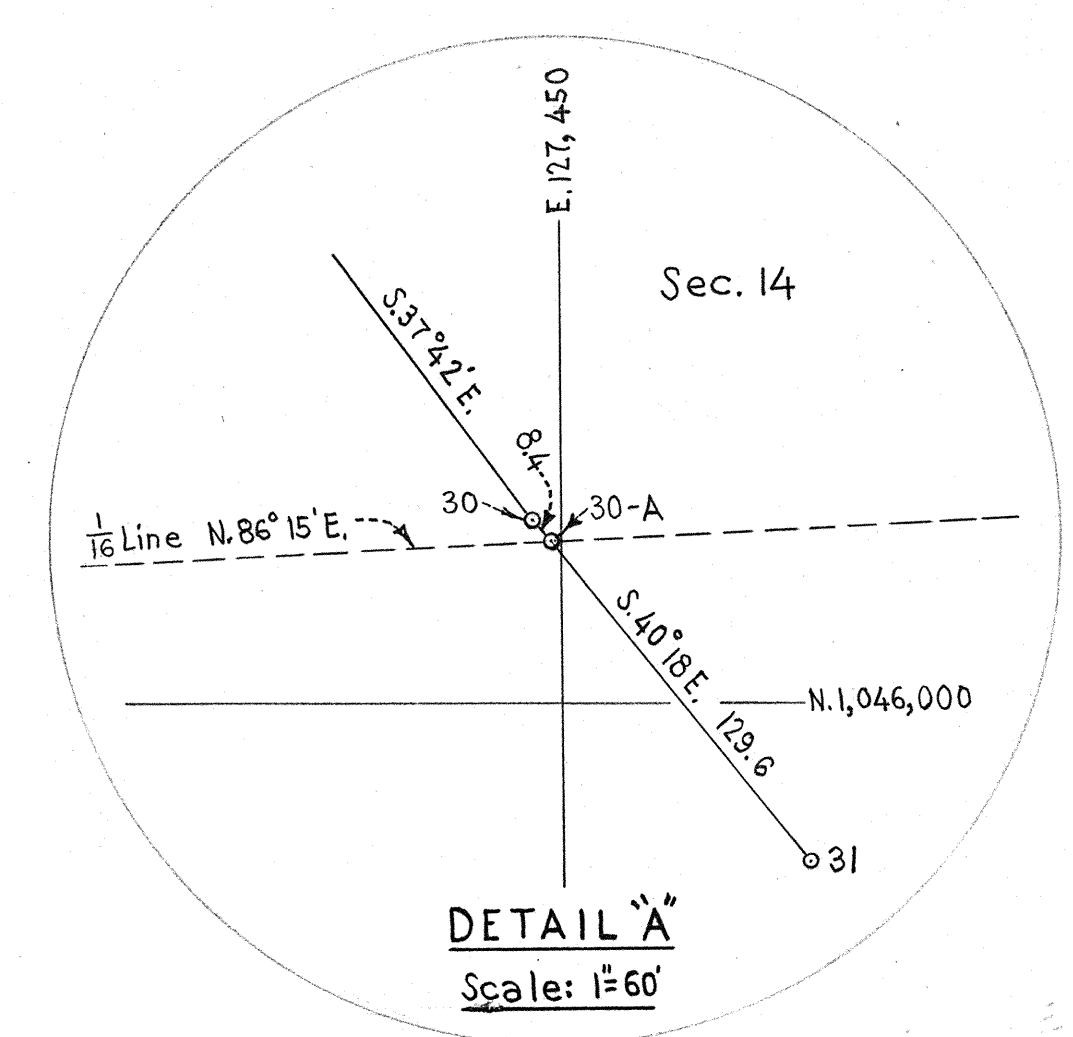
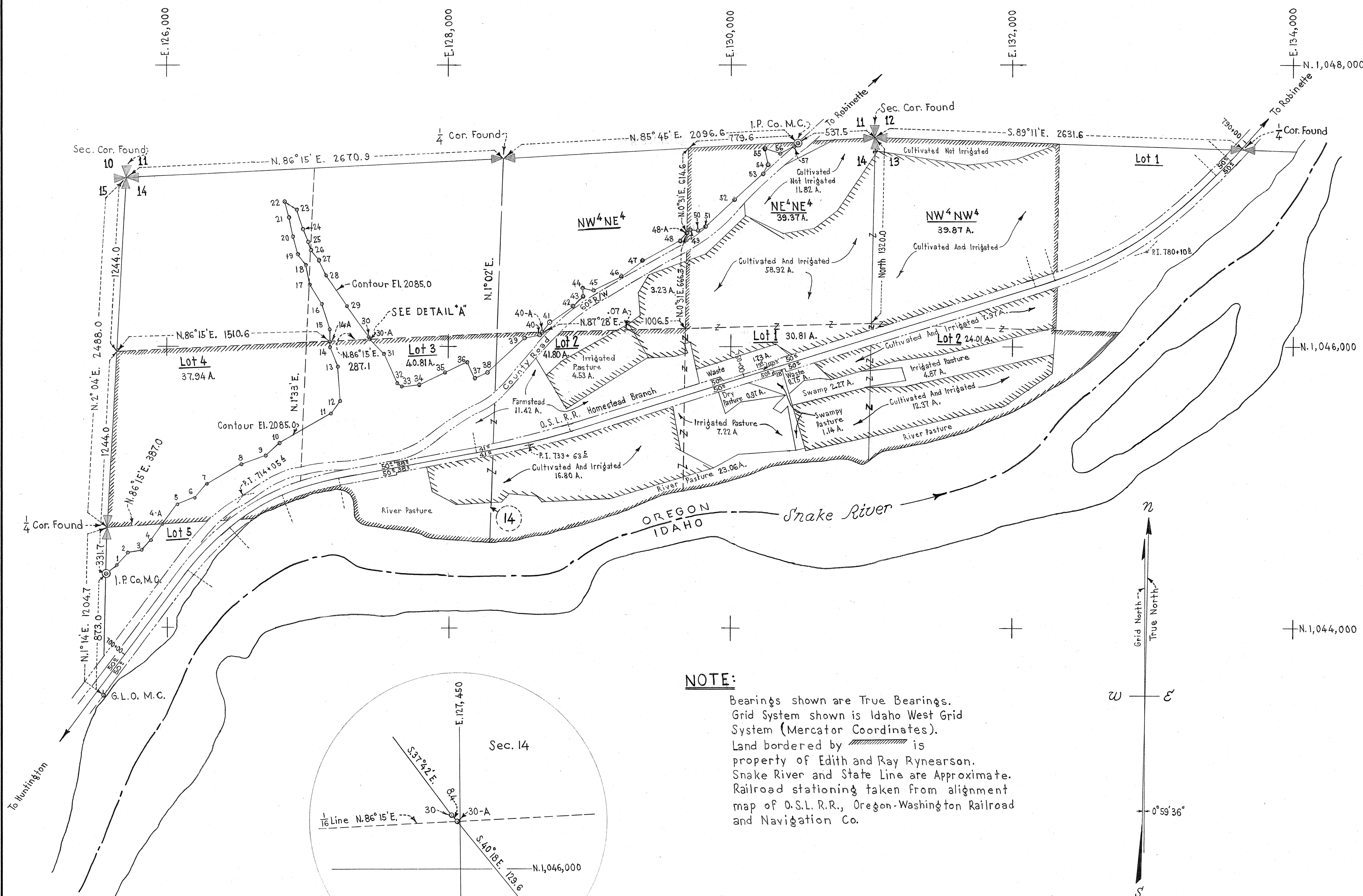


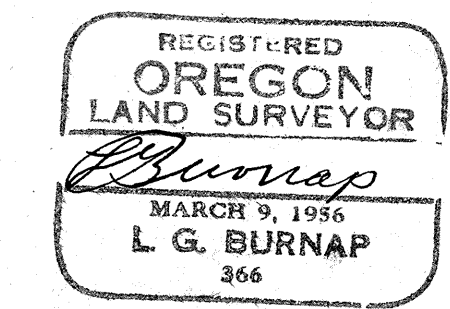
TRAVERSE OF  
EDITH & RAY RYNEARSON PROPERTY  
IN SEC. 13 & 14, T.12S., R.45E., W.M. ORE.  
ON CONTOUR AT ELEV. 2085 (M.S.L.)

STATION	COURSE	DISTANCE
1	N. 53° 14' E.	99.80
2	N. 35° 37' E.	122.00
3	N. 86° 02' E.	34.70
4	N. 39° 59' E.	90.50
4-A	N. 36° 19' E.	151.60
5	N. 36° 19' E.	176.40
6	N. 67° 31' E.	131.50
7	N. 38° 38' E.	126.00
8	N. 58° 50' E.	283.40
9	N. 63° 54' E.	179.00
10	N. 47° 04' E.	140.00
11	N. 60° 15' E.	407.90
12	N. 34° 07' E.	115.00
13	N. 4° 11' W.	252.50
14	N. 21° 10' W.	128.00
14-A	N. 5° 41' W.	53.50
15	N. 5° 41' W.	86.20
16	N. 17° 42' W.	188.30
17	N. 32° 16' W.	154.00
18	N. 14° 24' W.	157.90
19	N. 36° 53' W.	86.00
20	N. 16° 50' W.	128.20
21	N. 15° 07' W.	134.10
22	N. 13° 58' W.	120.40
23	S. 51° 43' E.	95.10
24	S. 23° 13' E.	148.00
25	S. 17° 08' E.	93.10
26	S. 24° 19' E.	60.00
27	S. 40° 44' E.	98.00
28	S. 18° 18' E.	108.80
29	S. 36° 45' E.	278.30
30	S. 37° 42' E.	281.10
30-A	S. 40° 18' E.	8.40
31	S. 40° 18' E.	129.60
32	S. 26° 04' E.	232.40
33	S. 52° 14' E.	45.50
34	N. 82° 55' E.	123.30
35	N. 61° 39' E.	203.60
36	N. 66° 49' E.	183.20
37	S. 24° 24' E.	118.00
38	N. 63° 39' E.	91.10
39	N. 46° 57' E.	376.00
40	N. 77° 27' E.	96.20
40-A	N. 38° 40' E.	28.60
41	N. 38° 40' E.	81.40
42	N. 54° 39' E.	209.20
43	N. 46° 01' E.	103.20
44	N. 6° 34' W.	59.00
45	S. 78° 57' E.	72.00
46	N. 62° 41' E.	227.40
47	N. 54° 03' E.	190.00
48	N. 59° 58' E.	296.40
48-A	N. 42° 03' E.	60.00
49	N. 42° 03' E.	52.00
50	S. 81° 32' E.	50.30
51	N. 58° 45' E.	64.50
52	N. 45° 33' E.	278.80
53	N. 46° 37' E.	274.60
54	N. 29° 34' E.	67.60
55	N. 15° 16' W.	101.30
56	S. 83° 01' E.	110.00
57	N. 63° 07' E.	117.50
I.P. Co. M.C.	N. 40° 55' E.	36.40



**NOTE:**  
Bearings shown are True Bearings.  
Grid System shown is Idaho West Grid System (Mercator Coordinates).  
Land bordered by is property of Edith and Ray Ryneerson.  
Snake River and State Line are Approximate.  
Railroad stationing taken from alignment map of O.S.L. R.R., Oregon-Washington Railroad and Navigation Co.

T.12S., R.45E. W.M. Ore.  
BAKER COUNTY



BROWNLEE H.E. DEVELOPMENT  
EDITH & RAY RYNEARSON  
PROPERTY SURVEY  
SECTIONS 13 & 14 T.12S., R.45E. W.M. Ore.  
IDAHO POWER CO.  
BOISE, IDAHO

NO.	DATE	REVISION	BY	CHK.
2	11-24-57	Revised cultivated lands	A.P.H.	L.S.B.
1	11-6-57	Add cultivated lands	R.M.T.	

SCALE: 1 in. = 400 ft. DATE: May 24, 1957

DR. R.M.T. APPROVED: *[Signature]* Sheet 4 D-BR-65  
TR. R.M.T.  
CH. A.P.H.