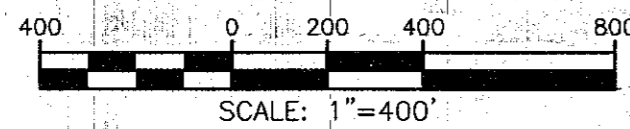
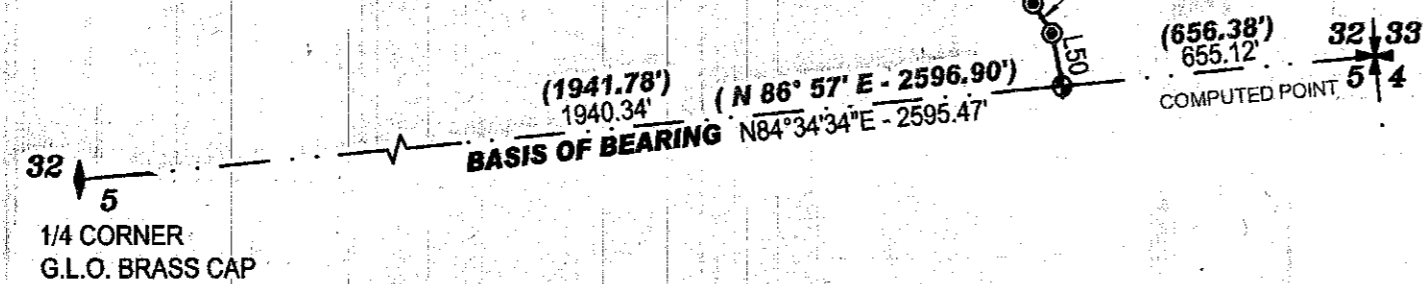
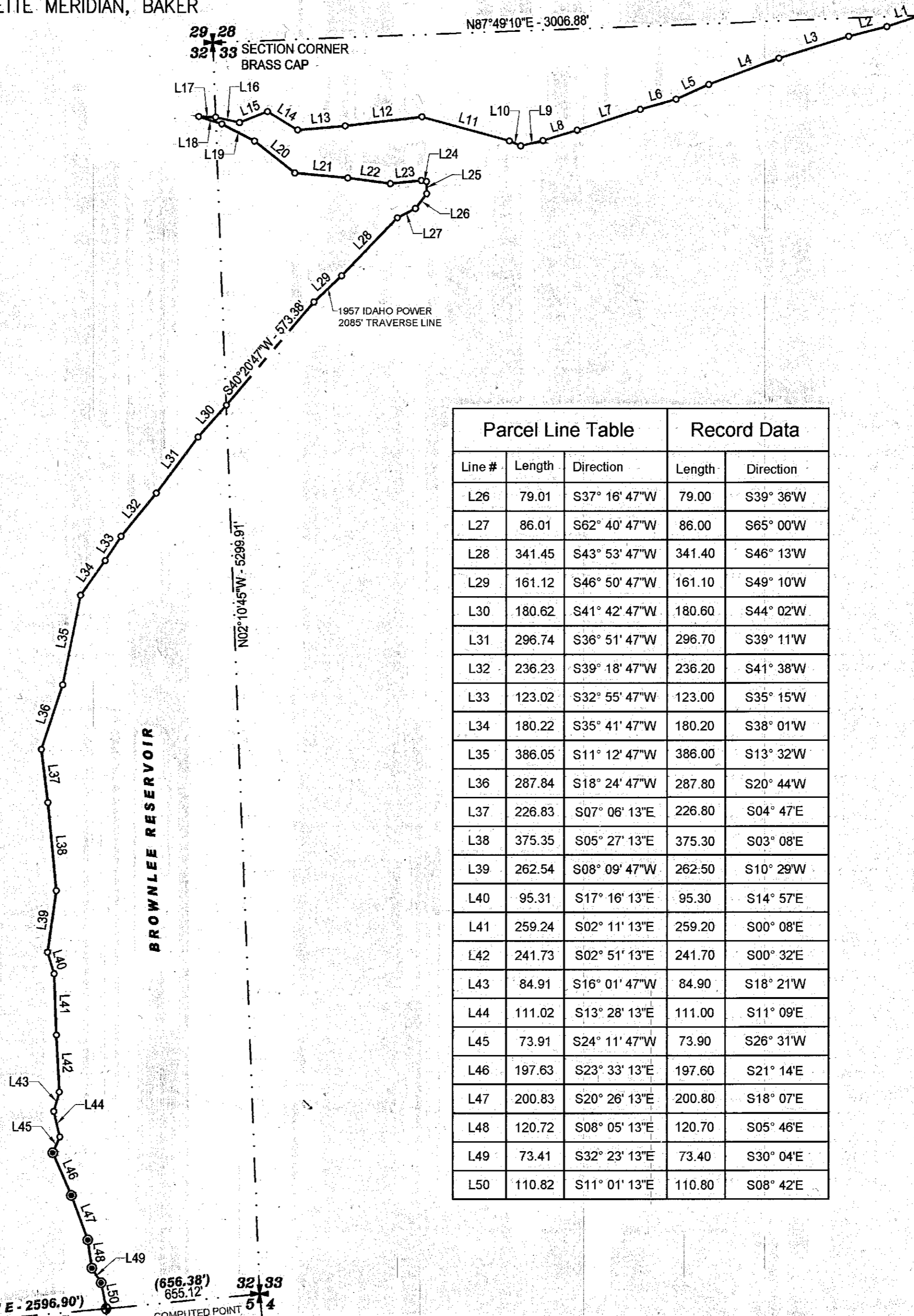


RECORD OF SURVEY FOR IDAHO POWER COMPANY

A PORTION OF THE NORTHWEST 1/4 OF SECTION 33, AND A PORTION OF
SECTION 32, TOWNSHIP 12 SOUTH, RANGE 45 EAST, WILLAMETTE MERIDIAN, BAKER
COUNTY, OREGON
-2011-



Parcel Line Table			Record Data	
Line #	Length	Direction	Length	Direction
L1	148.42	S71° 27' 47"W	148.40	S73° 47"W
L2	167.42	S75° 49' 47"W	167.40	S78° 09"W
L3	310.24	S72° 45' 47"W	310.20	S75° 05"W
L4	317.94	S69° 28' 47"W	317.90	S71° 48"W
L5	151.92	S65° 48' 47"W	151.90	S68° 08"W
L6	158.42	S74° 15' 47"W	158.40	S76° 35"W
L7	282.24	S71° 49' 47"W	282.20	S74° 09"W
L8	151.62	S73° 03' 47"W	151.60	S75° 23"W
L9	96.91	S76° 37' 47"W	96.90	S78° 57"W
L10	52.81	N66° 30' 13"W	52.80	N64° 11"W
L11	385.45	N74° 36' 13"W	385.40	N72° 17"W
L12	328.05	S83° 12' 47"W	328.05	S85° 32"W
L13	203.23	S85° 09' 47"W	203.20	S87° 29"W
L14	149.42	N58° 44' 13"W	149.40	N56° 25"W
L15	127.62	S68° 34' 47"W	127.60	S70° 54"W
L16	104.41	N77° 12' 13"W	104.40	N74° 53"W
L17	71.61	N87° 28' 13"W	71.60	N85° 09"W
L18	103.11	S71° 56' 13"E	103.10	S69° 37"E
L19	156.62	S62° 32' 13"E	156.60	S60° 13"E
L20	218.03	S51° 36' 13"E	218.00	S49° 17"E
L21	226.73	S84° 36' 13"E	226.70	S82° 17"E
L22	182.53	S82° 27' 13"E	182.50	S80° 08"E
L23	132.32	N84° 01' 47"E	132.30	N86° 21"E
L24	22.30	S78° 57' 13"E	22.30	S76° 38"E
L25	51.61	S00° 51' 13"E	51.60	S01° 28"W



LEGEND	
29, 28 32, 33	SECTION COR. MONUMENT AS NOTED
32, 5	1/4 COR. MONUMENT AS NOTED
⊙	SET 5/8" REBAR W/ CAP L.S. 70716
○	COMPUTED POINT (NOTHING FOUND OR SET)
⊕	M.C. IDAHO POWER BRASS CAP
- - - - -	BOUNDARY LINE
— — — — —	LOT LINE
— · — · — ·	SECTION LINE
(N 86° 57' E - 2596.90')	RECORD DATA

RECORD DATA

IPCO 1957 SURVEY D-BR-54
IPCO 1957 SURVEY D-BR-102
IPCO 1957 SURVEY D-BR-68
R.O.S. 12-45-1
R.O.S. 12-45-4

BASIS OF BEARING:

That part of the North line of the Northeast 1/4 of Section 5, Township 13 South, Range 45 East, Willamette Meridian, being from the North 1/4 corner of Section 5 to the found Idaho Power Meander Corner, taken as North 84°34'34" East and distance between monuments found to be 1940.34 feet, based upon Oregon State Plane North Zone.

NARRATIVE:

This survey was made at the request of Gil Green with Idaho Power Company to mark the angle points of the 1957 2085' Contour Traverse Line, as shown. The original traverse line was rotated and scaled to fit between the found Idaho Power Meander Corner Brass Cap monuments. Each tangent of the traverse line received a portion of the scale adjustment.

CERTIFICATE:

I, Russell Badgley, a Registered Professional Land Surveyor hereby state that on February 21, 2011 a survey was completed, of a portion the Northwest 1/4 of Section 33 & a portion of Section 32, Township 12 South, Range 45 East, W.M., and was made by me or under my direction supervision. That the property corners are marked as shown and that this map is a true and accurate representation of said survey.

REGISTERED
PROFESSIONAL
LAND SURVEYOR

Russell Badgley 7/2/11

RUSSELL BADGLEY

70716 LS

OREGON
NOVEMBER 13, 2007
RUSSELL BADGLEY
70716 LS

COUNTY SURVEYOR
RECORDING INFO

By _____
Received Aug 1, 2011
Accepted _____
SURVEY NO. 12-45-12
DRAWING NO. _____

TIMBERLINE SURVEYING

847 PARKCENTRE WAY, SUITE 3, NAMPA, IDAHO 83651
P: 208-465-5687 ~ F: 208-465-5690

FILE: 12-45-12-12
JOB NO: 01023
SHEET: 1 OF 1
INDEX NO. 12452-33&32