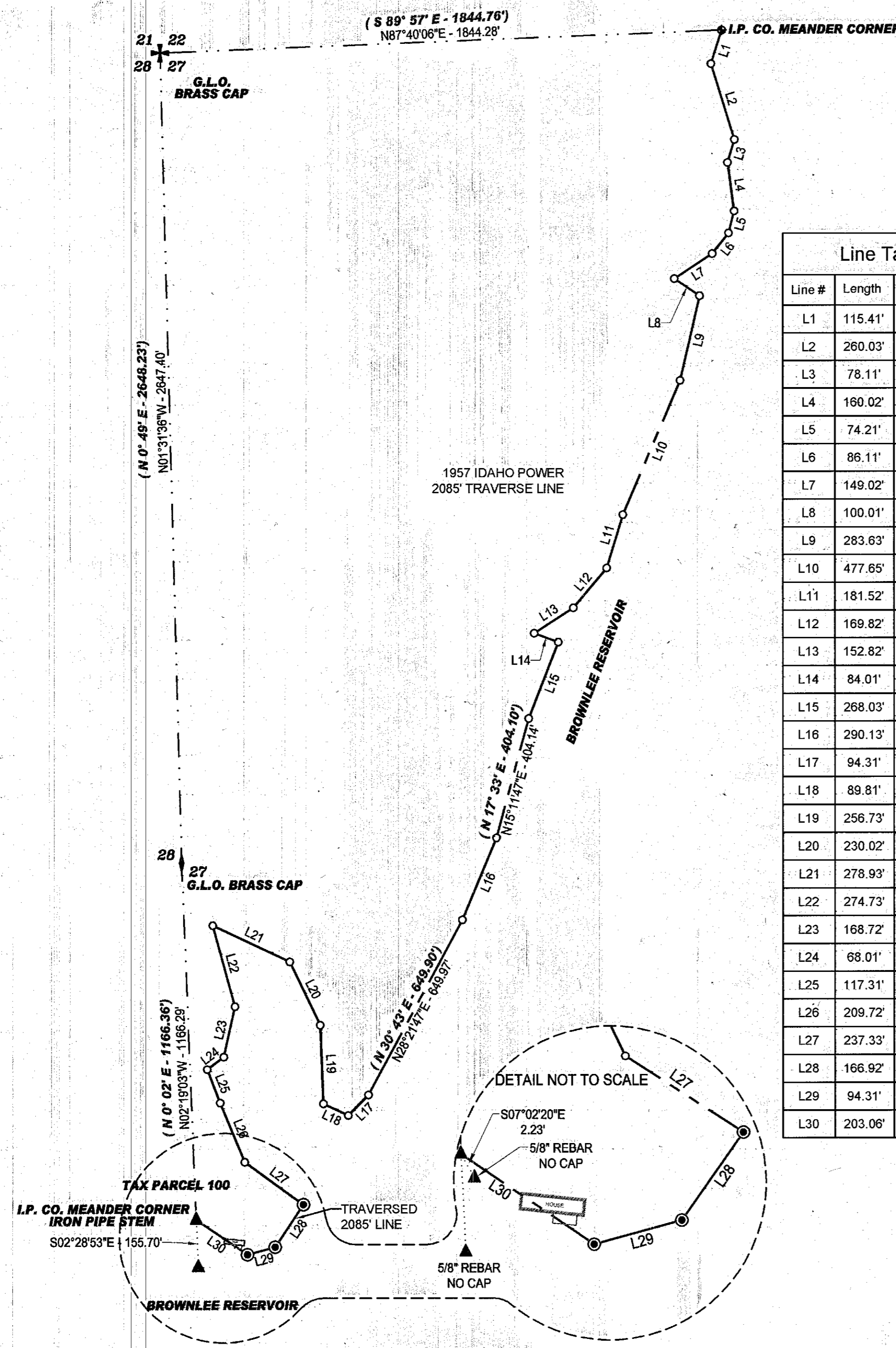


RECORD OF SURVEY FOR IDAHO POWER COMPANY

A PORTION OF THE WEST 1/2,
OF SECTION 27, TOWNSHIP 12 SOUTH, RANGE 45 EAST, W.M.,
BAKER COUNTY, OREGON
-2011-



Line Table			Record Data	
Line #	Length	Direction	Length	Direction
L1	115.41'	N17°42'47"E	115.40	N20° 04' E
L2	260.03'	N17°22'13"W	260.00	N15° 01' W
L3	78.11'	N16°53'47"E	78.10	N19° 15' E
L4	160.02'	N07°44'13"W	160.00	N05° 23' W
L5	74.21'	N14°04'47"E	74.20	N16° 26' E
L6	86.11'	N38°27'47"E	86.10	N40° 49' E
L7	149.02'	N56°47'47"E	149.00	N59° 09' E
L8	100.01'	N55°50'13"W	100.00	N53° 29' W
L9	283.63'	N13°00'47"E	283.60	N15° 22' E
L10	477.65'	N23°09'47"E	477.60	N25° 31' E
L11	181.52'	N16°59'47"E	181.50	N19° 21' E
L12	169.82'	N40°07'47"E	169.80	N42° 29' E
L13	152.82'	N57°07'47"E	152.80	N59° 29' E
L14	84.01'	N69°54'13"W	84.00	N67° 33' W
L15	268.03'	N21°12'47"E	268.00	N23° 34' E
L16	290.13'	N22°39'47"E	290.10	N25° 01' E
L17	94.31'	N44°49'47"E	94.30	N47° 11' E
L18	89.81'	S64°52'13"E	89.80	S62° 31' E
L19	256.73'	S02°18'13"E	256.70	S00° 03' E
L20	230.02'	S25°51'13"E	230.00	S23° 30' E
L21	278.93'	S64°51'13"E	278.90	S62° 30' E
L22	274.73'	N15°23'13"W	274.70	N13° 02' W
L23	168.72'	N12°33'47"E	168.70	N14° 55' E
L24	68.01'	N53°23'47"E	68.00	N55° 45' E
L25	117.31'	N21°14'13"W	117.30	N18° 53' W
L26	209.72'	N22°38'13"W	209.70	N20° 17' W
L27	237.33'	N54°14'13"W	237.30	N51° 53' W
L28	166.92'	S33°49'47"W	166.90	N 36° 11' E
L29	94.31'	S74°49'47"W	94.30	N 77° 11' E
L30	203.06'	N55°55'13"W	203.04	S53° 34' E

LEGEND

- SECTION COR. MONUMENT AS NOTED
- 1/4 COR. MONUMENT AS NOTED
- FOUND BRASS CAP AS NOTED
- SET 5/8" REBAR W/ CAP PLS
- COMPUTED POINT
- FOUND MONUMENT AS NOTED
- NOT BOUNDARY LINE
- SECTION LINE
- TIE LINE
- RECORD DATA

CERTIFICATE:

I, Russell Badgley, a Registered Professional Land Surveyor hereby state that on February 16, 2011 a survey was completed, of a portion of the West 1/2 of Section 27, Township 12 South, Range 45 East, W.M., and was made by me or under my direction supervision. That the property corners are marked as shown and that this map is a true and accurate representation of said survey.

REGISTERED
PROFESSIONAL
LAND SURVEYOR

Russell Badgley 7/22/11

NOVEMBER 13, 2007
RUSSELL BADGLEY
70716 LS

BASIS OF BEARING:

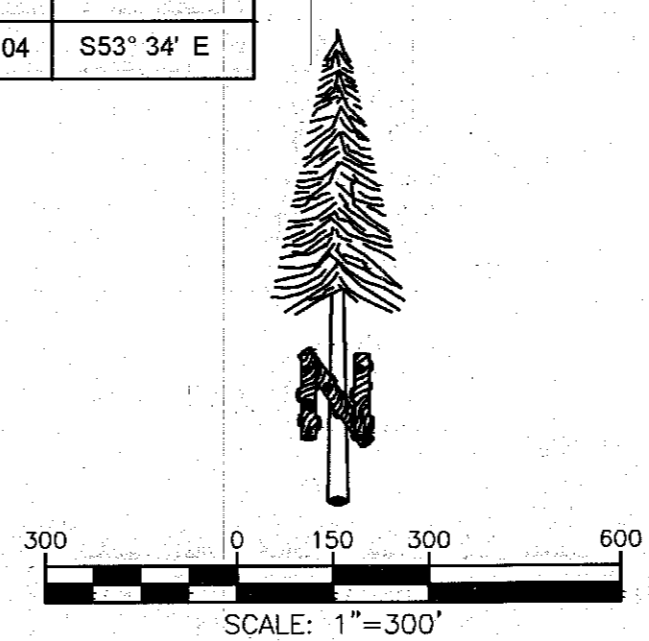
The West line of the Northwest 1/4 of Section 27, Township 12 South, Range 45 East, Willamette Meridian, taken as North 01°31'36" West and distance between monuments found to be 2647.40 feet, based upon Oregon State plane North Zone.

RECORD DATA

- IPCO 1957 SURVEY D-BR-54
- IPCO 1957 SURVEY D-BR-102
- IPCO 1957 SURVEY D-BR-68
- R.O.S. 12-45-1
- R.O.S. 12-45-4

NARRATIVE:

This survey was made at the request of Gil Green with Idaho Power Company to mark the angle points of the 1957 2085' Contour Traverse Line, as shown. The original traverse line was rotated and scaled to fit between the found Idaho Power Meander Corner Brass Cap monuments. Each tangent of the traverse line received a portion of the scale adjustment. The house shown is scheduled to be moved.



DISCLAIMER
Timberline Surveying assumes no responsibility for present or future compliance or noncompliance of any ordinance to include building permits or the issuance thereof.

COUNTY SURVEYOR
RECORDING INFO

By _____

Received Aug 1, 2017

Accepted _____

SURVEY NO. 12-45-11

DRAWING NO. _____

TIMBERLINE
SURVEYING

847 PARKCENTRE WAY, SUITE 3, NAMPA, IDAHO 83651
P: 208-465-5687 ~ F: 208-465-5690

FILE: U:\11-IDAHO POWER\JOB\1105A\01-BROWNLEE PROJECT\RES 2007\RES 2007\12-45-11\1105A-01.dwg

JOB NO: 11004.001

SHEET: 1 OF 1

INDEX NO. 000-00-0-0-00-00