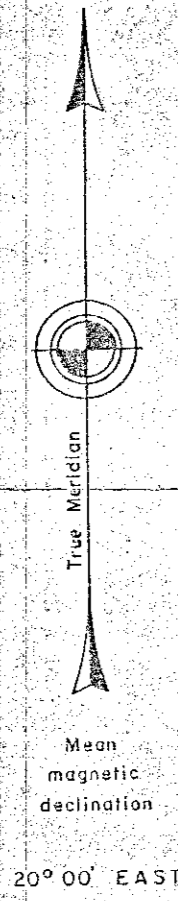
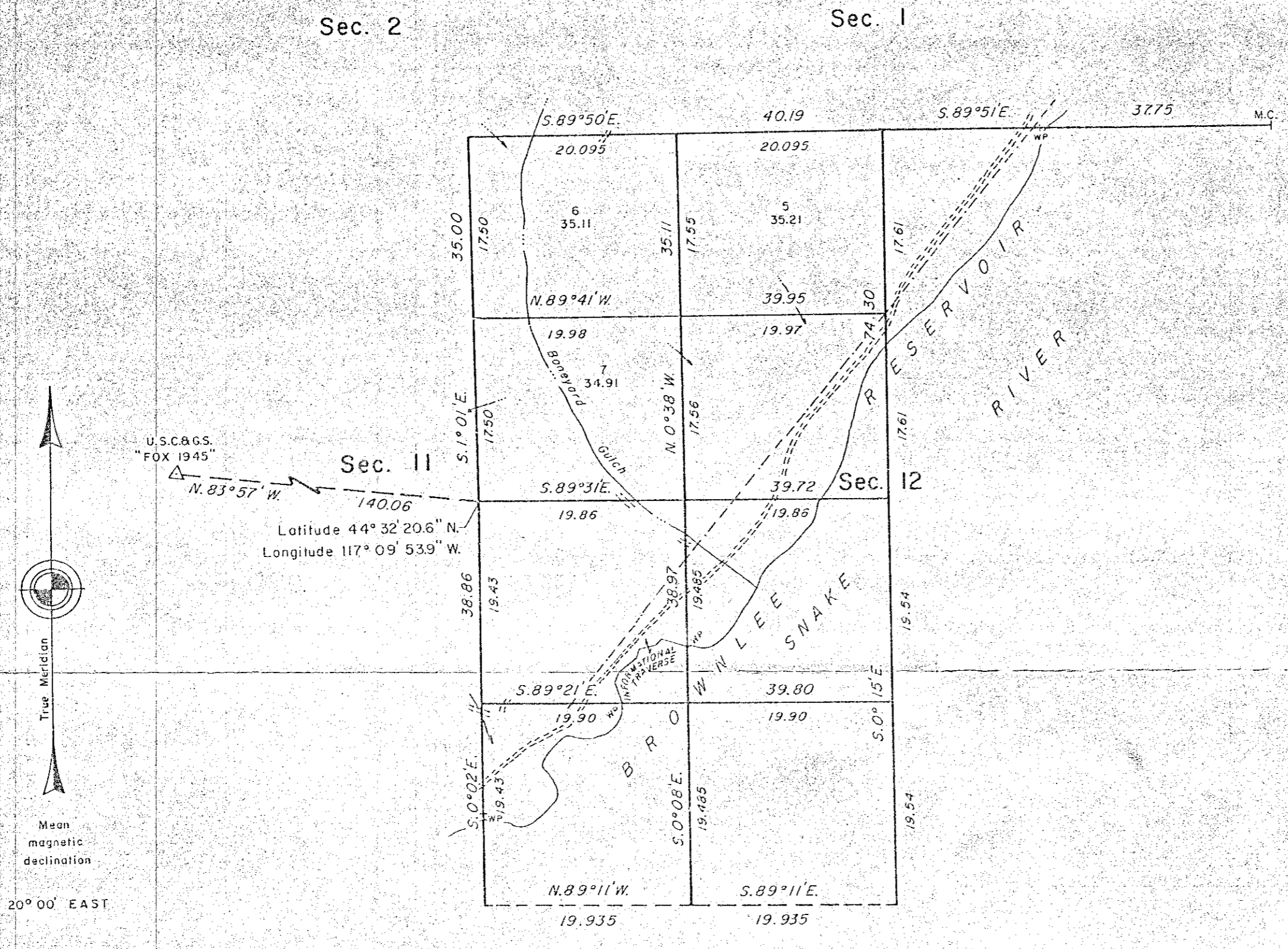
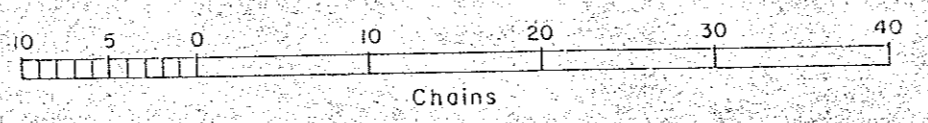


TOWNSHIP 12 SOUTH, RANGE 45 EAST, OF THE WILLAMETTE MERIDIAN, OREGON
DEPENDENT RESURVEY AND SUBDIVISION OF SECTION 12



Sec. II
Latitude $44^{\circ} 32' 20.6'' N.$
Longitude $117^{\circ} 09' 53.9'' W.$



A history of surveys is contained in the field notes.

This plat represents a dependent resurvey of a portion of the subdivisional lines, T. 12 S., R. 45 E., Willamette Meridian, Oregon, designed to restore the corners in their true original locations according to the best available evidence, and the subdivision of section 12.

Except as shown hereon the lottings and areas are as shown on the plat approved October 25, 1832, and the plat accepted March 4, 1940.

The survey was executed by Scott R. McIntyre and William D. Kimmel, Cadastral Surveyors, beginning June 8, 1982, and completed November 28, 1984, pursuant to Special Instructions dated June 3, 1982, and Supplemental Special Instructions dated September 18, 1984, under Group Number 1110, Oregon.

UNITED STATES DEPARTMENT OF THE INTERIOR
BUREAU OF LAND MANAGEMENT
Portland, Oregon January 3, 1986

This plat is strictly conformable to the approved field notes, and the survey, having been correctly executed in accordance with the requirements of law and the regulations of this Bureau, is hereby accepted.

For the Director

William W. Glenn
Chief Cadastral Surveyor of Oregon

FILED 1-20-86
BANKER COUNTY SURVEYOR
SURVEY NO. 12-415-C