

# GOVERNMENT CORNER RECORD

Township 13S Range 44E Section  $\frac{33}{4} \frac{34}{3}$  County BAKER

State OREGON Date 6/23/11 Number A-13

**Corner Designation** : SECTION CORNER  $\frac{33}{4} \frac{34}{3}$

- Condition Report Only
- Not Found
- Renewed
- Surveyed In
- Reference

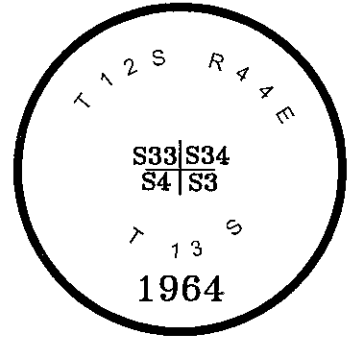
Previous Renewals \_\_\_\_\_

**Monument(s) Found:** (Condition and Source)

B.L.M BRASS CAP, WITH MOUND OF STONE

### MONUMENT DETAIL

Found  Set



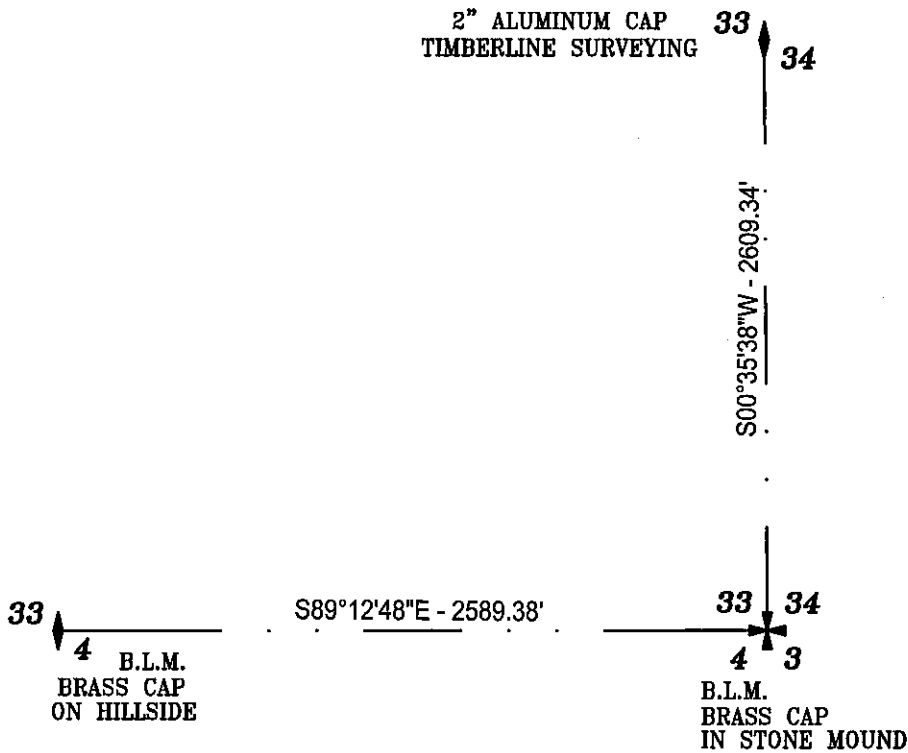
**Accessories Found:**

NONE

**Monument & Accessories Set (Procedure and Description)**

NONE

### Sketch of Monument, Accessories and General Area



#### Surveyor's Seal

REGISTERED  
PROFESSIONAL  
LAND SURVEYOR

*Russell Badgley*  
7/29/11

OREGON  
NOVEMBER 13, 2007  
RUSSELL BADGLEY  
70716 LS

RENEWAL DATE : 12-31-11

Agency TIMBERLINE SURVEYING

Party Chief M. FEMENIA

Notekeeper \_\_\_\_\_

Witness(s) \_\_\_\_\_

#### COUNTY SURVEYOR RECORDING INFO

Received \_\_\_\_\_

Filed AUG. 1, 2011

Survey No. 12-44-16

13-44-25

Drawing No. \_\_\_\_\_

Index No. \_\_\_\_\_