

GOVERNMENT CORNER RECORD

Township 12S Range 44E Section 33|34 County BAKER

State OREGON Date 6/21/11 Number X-13

Corner Designation : QUARTER CORNER 33|34

- Condition Report Only
- Not Found
- Renewed
- Surveyed In
- Reference

Previous Renewals _____

Monument(s) Found: (Condition and Source)

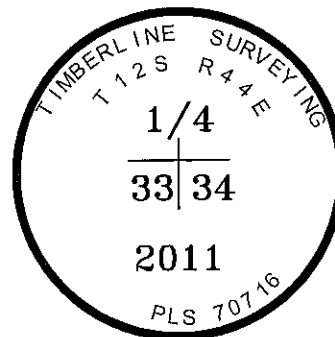
BASALT STONE 22X8X3, 1/4 ON W. FACE, MONUMENT IN GOOD CONDITION.

MONUMENT DETAIL

Found Set

Accessories Found:

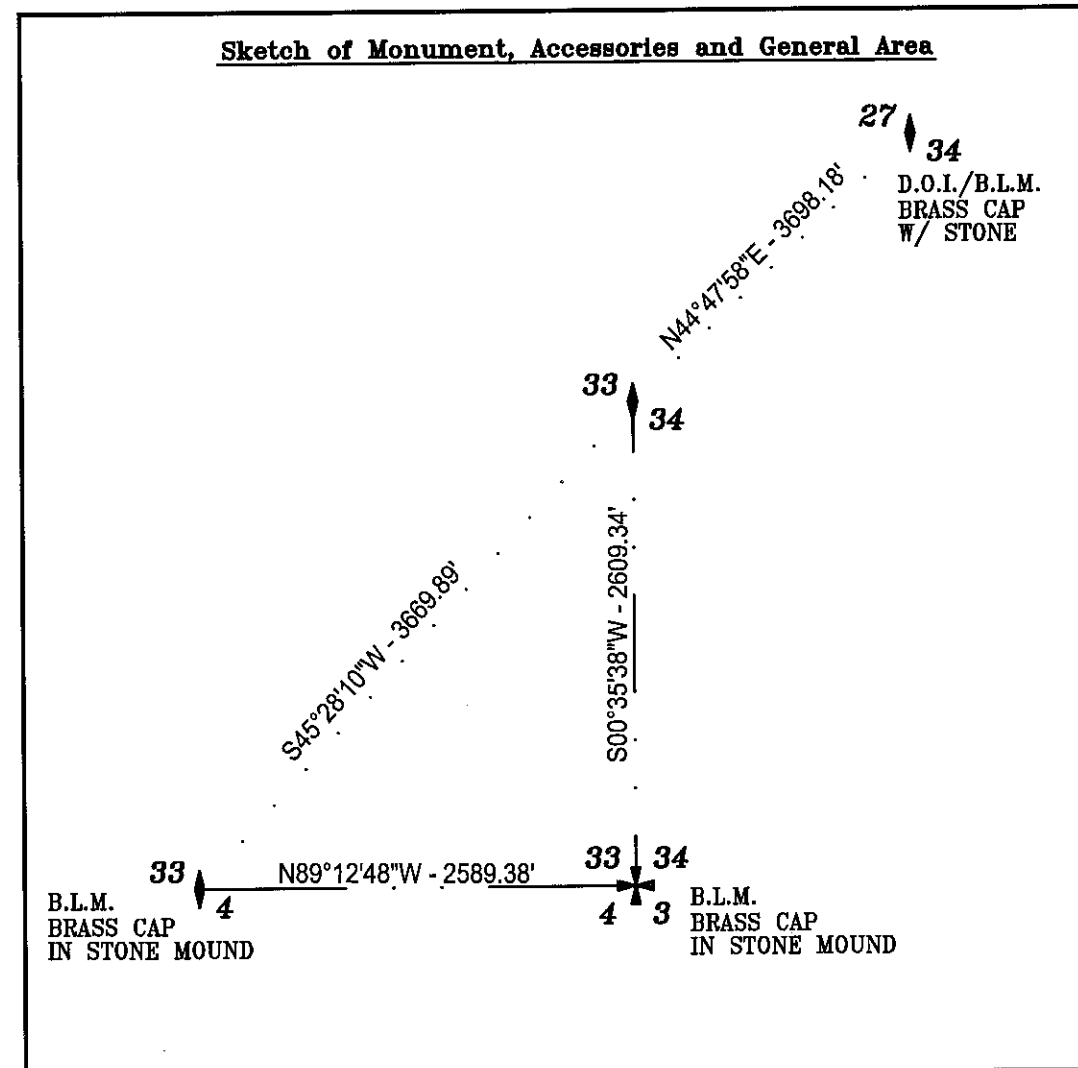
NONE



Monument & Accessories Set (Procedure and Description)

SET FENO MONUMENT, WITH 2" ALUMINUM CAP, STAMPED AS SHOWN FOR 1/4 CORNER TO SECTION 33 & 34 T12S R44E. BURIED ORIGINAL STONE(BASALT 22X8X3 1/4 ON WEST FACE) FACE DOWN ON UPHILL SIDE, ALONG SIDE OF ALUMINUM CAP.

Sketch of Monument, Accessories and General Area



Surveyor's Seal

REGISTERED PROFESSIONAL LAND SURVEYOR
Russell Badgley
 7/29/11
 OREGON
 NOVEMBER 13, 2007
 RUSSELL BADGLEY
 70716 LS

RENEWAL DATE : 12-31-11

Agency TIMBERLINE SURVEYING
 Party Chief M. FEMENIA
 Notekeeper _____
 Witness(s) _____

COUNTY SURVEYOR RECORDING INFO

Received _____
 Filed Aug. 1, 2011
 Survey No. 12-44-12
 Drawing No. _____
 Index No. _____