

GOVERNMENT CORNER RECORD

Township 12S Range 44E Section 17/20 County BAKER

State OREGON Date 6/23/11 Number N-7

Corner Designation : 1/4 CORNER 17/20

- Condition Report Only
- Not Found
- Renewed
- Surveyed In
- Reference

Previous Renewals _____

Monument(s) Found: (Condition and Source)

BASALT STONE 18X18X12 1/4 ON WEST FACE

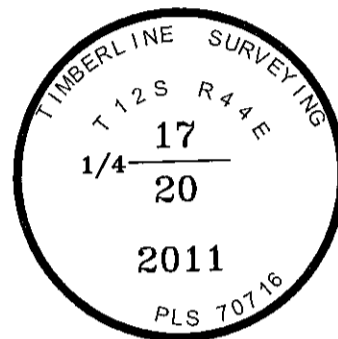
MONUMENT IN GOOD CONDITION.

Accessories Found:

NONE

MONUMENT DETAIL

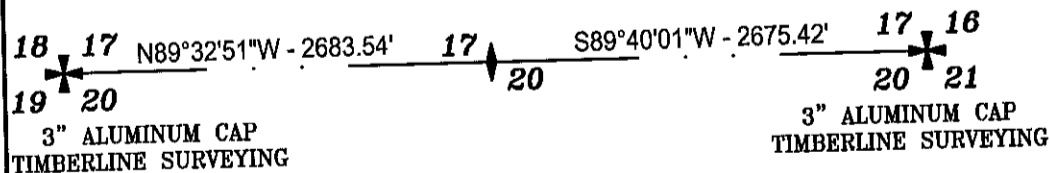
Found Set



Monument & Accessories Set (Procedure and Description)

SET FENO MONUMENT, WITH 2" ALUMINUM CAP, STAMPED AS SHOWN. BURIED ORIGINAL STONE FACE DOWN
ALONG EASTERLY SIDE OF MONUMENT. MOUND OF STONES 3' BASE 1.5' HIGH, TO EAST OF MONUMENT.

Sketch of Monument, Accessories and General Area



Surveyor's Seal

REGISTERED
PROFESSIONAL
LAND SURVEYOR

7/29/11
OREGON
NOVEMBER 13, 2007
RUSSELL BADGLEY
70716 LS

RENEWAL DATE : 12-31-11

Agency TIMBERLINE SURVEYING
Party Chief M. FEMENIA
Notekeeper _____
Witness(s) _____

COUNTY SURVEYOR
RECORDING INFO

Received _____
Filed Aug. 1, 2011
Survey No. 12-44-5
Drawing No. _____
Index No. _____