

ASH GROVE CEMENT DURKEE, OR DOGAMI ID No. 01-0053

T. 12 S. R. 43 E., W.M.

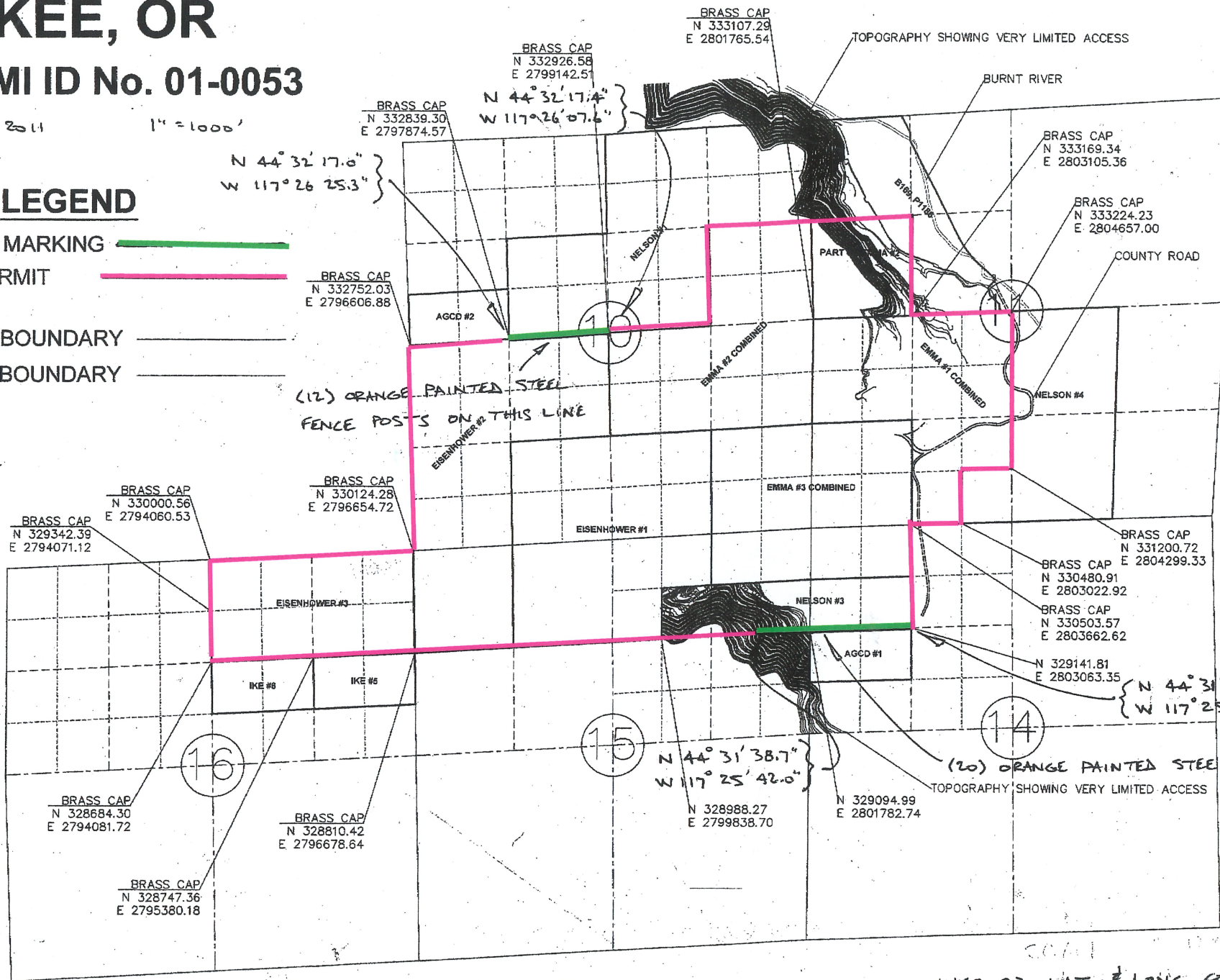
AUG., 2011

1" = 1000'

LEGEND

- BOUNDARY MARKING ———
- DOGAMI PERMIT BOUNDARY ———
- PROPERTY BOUNDARY
- BLM CLAIM BOUNDARY

STATE PLANE COORDS. ARE FROM THE WORK OF DAVE BEEDLE, FORMER PLANT ENGR. & DUANE WISE, R.L.S. UTAH



STATE PLANE GRID NORTH

LINE POSTING IS BY CHRIS BARRETT, ASH GROVE CEMENT CO. PLANT ENGINEER & HIS CREW, USING TRIMBLE SURVEY GRADE GPS. SYSTEM

WGS. 83 LAT. & LONG. COORDS. BY TOM HANLEY, USING HAND-HELD GARMIN GPS, w/ 0.1" PRECISION / ALL 32 STEEL FENCE POSTS WERE SHOT IN

REGISTERED PROFESSIONAL LAND SURVEYOR
THOMAS HANLEY