

GOVERNMENT CORNER RECORD

Township 12S Range 44E Section 13/18 / 24/19 County BAKER

State OREGON Date 6/21/11 Number N-1

Corner Designation : SECTION CORNER 13/18 / 24/19

Condition Report Only
 Not Found
 Renewed
 Surveyed In
 Reference

Previous Renewals _____

Monument(s) Found: (Condition and Source)

BASALT STONE 18X12X12, 3 NOTCHES ON N & S SIDES,
MONUMENT IN GOOD CONDITION.

MONUMENT DETAIL

Found Set

Accessories Found:

NONE

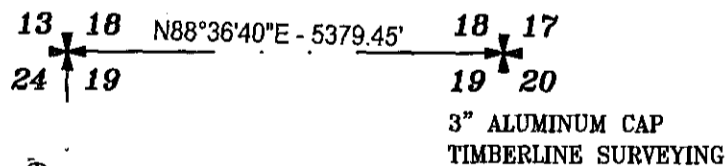


Monument & Accessories Set (Procedure and Description)

SET FENO MONUMENT, WITH 3" ALUMINUM CAP, STAMPED AS SHOWN FOR SECTION CORNER.

BURIED ORIGINAL STONE(BASALT 18X12X12) ALONG EASTERLY SIDE, IN MOUND OF STONES 3' BASE.

Sketch of Monument, Accessories and General Area



24 | 19
 25 | 30
 B.L.M.
 BRASS CAP
 IN STONE MOUND

Surveyor's Seal

REGISTERED
PROFESSIONAL
LAND SURVEYOR

OREGON
NOVEMBER 13, 2007
RUSSELL BADGLEY
70716 LS

7/29/11
RENEWAL DATE : 12-31-11

Agency TIMBERLINE SURVEYING

Party Chief M. FEMENIA

Notekeeper _____

Witness(s) _____

COUNTY SURVEYOR RECORDING INFO

Received _____

Filed Aug 1, 2011

Survey No. 12-43-13

12-44-3

Drawing No. _____

Index No. _____