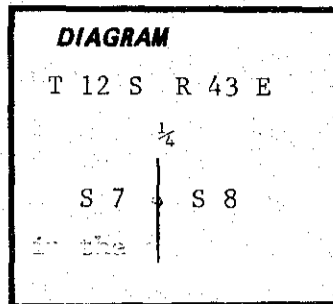


CERTIFIED RECORD OF LAND CORNER MONUMENTATION

History of original corner establishment:

Subdivisions of T. 12 S., R. 43 E., W.M. were surveyed by Herman D. Gradon, Deputy Surveyor, under Contract No. 428, dated Dec. 16, 1881.

G L O record states "Set a basalt stone, 14 x 10 x 7 ins., 9 ins. in the ground, for 1/4 sec. cor., mkd. 1/4 on W. face; Dug pits, 18 x 18 x 12 ins., N. and S. of stone, 5 1/2 ft. dist., raised a mound of earth, 1 1/2 ft. high, 3 1/2 ft. base, alongside."

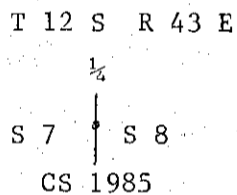


Description of corner evidence found:

None. Corner is declared lost.

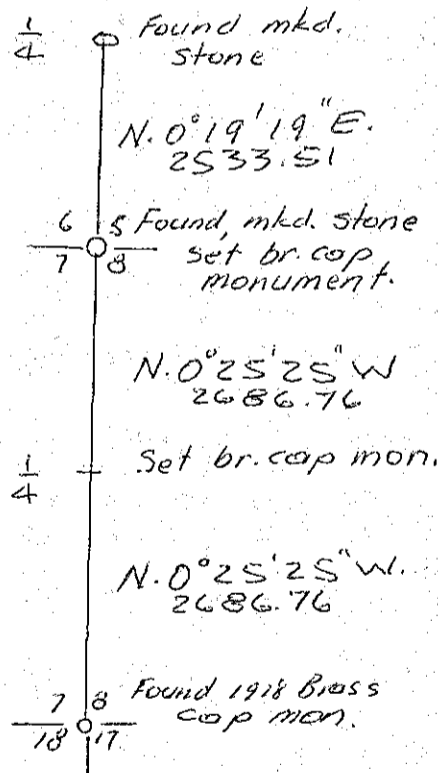
Description of monument and accessories established to perpetuate the original location of this corner:

Set an iron post, 30 ins. long, 1 1/2 ins. diam., 27 ins. in the ground, with brass cap marked



This monument was established July 24, 1985, witnessed by Tom Fiske and Chris Mahoney.

This sketch is for purpose of describing relationship between found and reestablished corners. Basis of bearing is assumed 20° magnetic variation.



Office of... County Surveyor..... County of... Baker
 State of... Oregon....., I hereby certify that the within instrument was filed in this office
 for record on the... 25 day of... July....., 19.85
 by
 (COUNTY OFFICIAL) (DEPUTY)

**REGISTERED
 PROFESSIONAL
 LAND SURVEYOR**

James D. Hanley
OREGON
 SEPTEMBER 23, 1977
 JAMES D. HANLEY
 1206

Form R6-7100-57 (9/71)

FILED July 25 1985
 BAKER COUNTY SURVEYOR
 12-43 -8
 SURVEY NO. 8