

NARRATIVE

This survey was made for Ash Grove Cement West, Inc. from Oct. 31, 1984 to Jan. 7, 1985 for the purpose of establishing Nelson No. 4 Claim corners. The claim consists of the W $\frac{1}{2}$ SE $\frac{1}{4}$ and the SE $\frac{1}{4}$ SE $\frac{1}{4}$ SW $\frac{1}{4}$ of section 11, T. 12 S., R. 43 E., W.M. section and quarter section corners necessary for the subdivision of section 11 were found, except the East and South quarter corners. The South quarter corner was reestablished by proportionate measurements between the two South section corners. The East quarter corner stone had previously been found by Philo H. Anderson, Ore. PE # 1257 and shown on his Map of Sections 10, 11 and N $\frac{1}{2}$ of 14 and 15, drawn from his surveys of Dec. 29, 1953 to Jan. 8, 1954, and Oct. 19, 1959 to Dec. 18, 1959 for Oregon Portland Cement Co. No trace of that corner was recovered during this survey. I believe the original stone monument has been dislodged and has rolled down a steep hillside.

A comparison of the bearings and distances between found corners of the Anderson survey and this survey was made and an angular rotation value determined. The angular differences were fairly constant; the horizontal distances did not compare favorably. I believe the differences in distance measurements is a result of his chaining along the steep terrain versus this use of electronic measuring equipment.

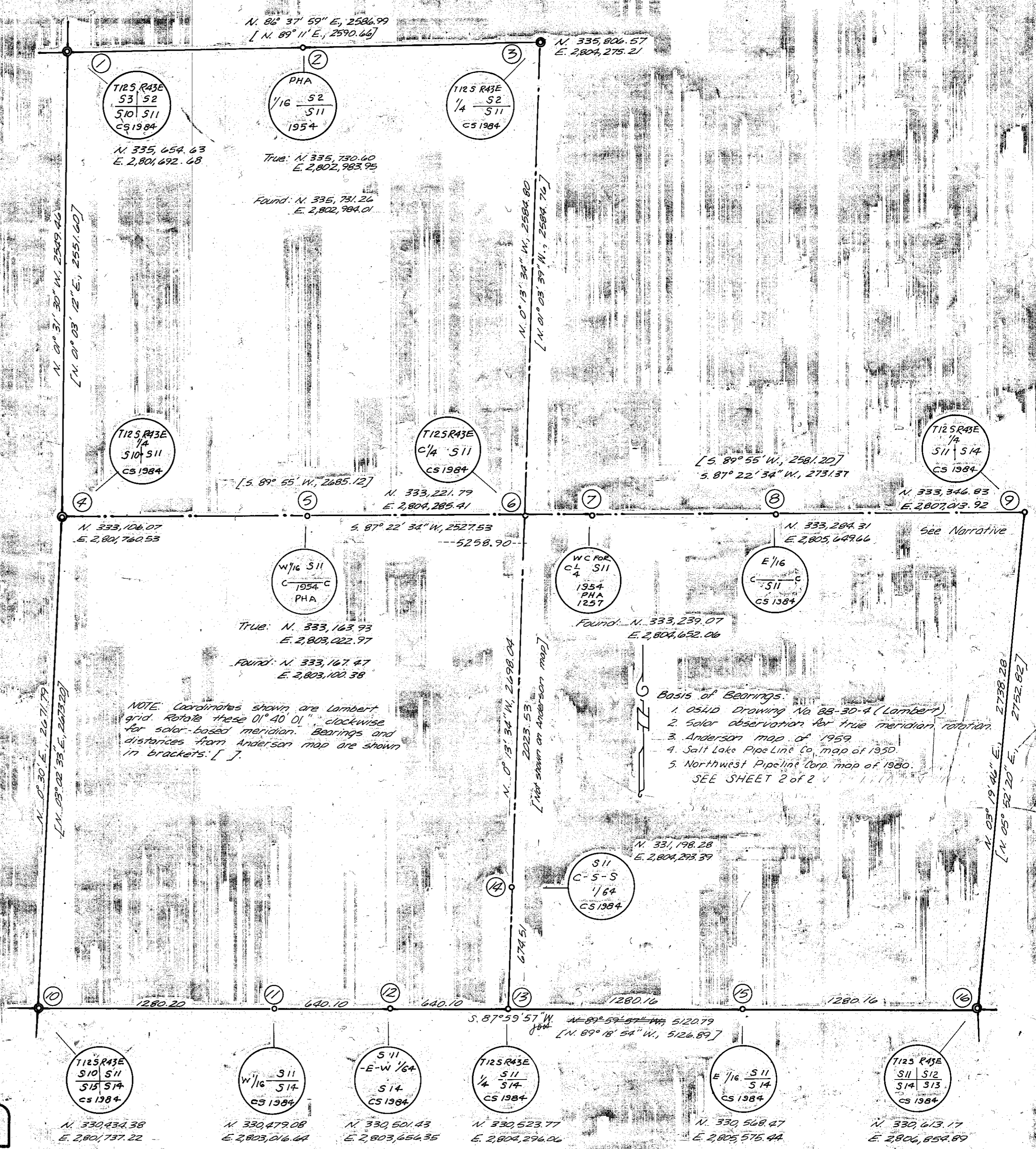
In order to reestablish the East quarter corner to its original position as found by Anderson, I employed the bearing-bearing intersection method from the southeast section corner, using Anderson's bearing rotated to this meridian, and the mid-section line extended from the West quarter section corner through the found Anderson monument marking his West $\frac{1}{4}$ corner. I believe this reconstruction of Anderson's described location is as close to the original as now possible. The survey and section subdivision then proceeded according to standard survey practices.

The owners require that corners of this survey contain the Lambert coordinates. The Oregon State Highway Department Drawing No. 88-30-4 shows the Lambert coordinates for the I84 Highway (formerly I80N) centerline data. Highway reference monuments opposite P.O.T. Stas. 1400+00 and 1390+00 were tied to and the coordinates computed from those given for Hwy Sta. EB 1410+91.62 P.I. = N 335,368.16 and E 2,803,393.29. The highway bearing for the tangent between P.O.T.'s is S. 26° 42' 30" E.

NOTE: Coordinates shown are Lambert grid. Rotate these 01° 40' 01" clockwise for solar-based meridian. Bearings and distances from Anderson map are shown in brackets: [].

Basis of Bearings:

- OSHD Drawing No. 88-30-4 (Lambert)
 - Solar observation for true meridian rotation.
 - Anderson map of 1959.
 - Salt Lake Pipe Line Co. map of 1950.
 - Northwest Pipeline Corp. map of 1980.
- SEE SHEET 2 of 2



MAP OF SURVEY
 SUBDIVISION OF SECTION 11, T. 12 S., R. 43 E., W.M.
 Surveyed Oct. 31, 1984 - Jan. 7, 1985
 For ASH GROVE CEMENT WEST, INC.
 Scale 1" = 400'
 By HANLEY ENGINEERING, Baker, Oregon

REGISTERED PROFESSIONAL LAND SURVEYOR

James D. Hanley
 OREGON SEPTEMBER 22, 1977
 JAMES D. HANLEY
 1206

FILED Jan 25 1985
 BAKER COUNTY SURVEYOR
 SURVEY NO. 12-43-C

Corrections & additions
 Nov. 25, 1985 JPH