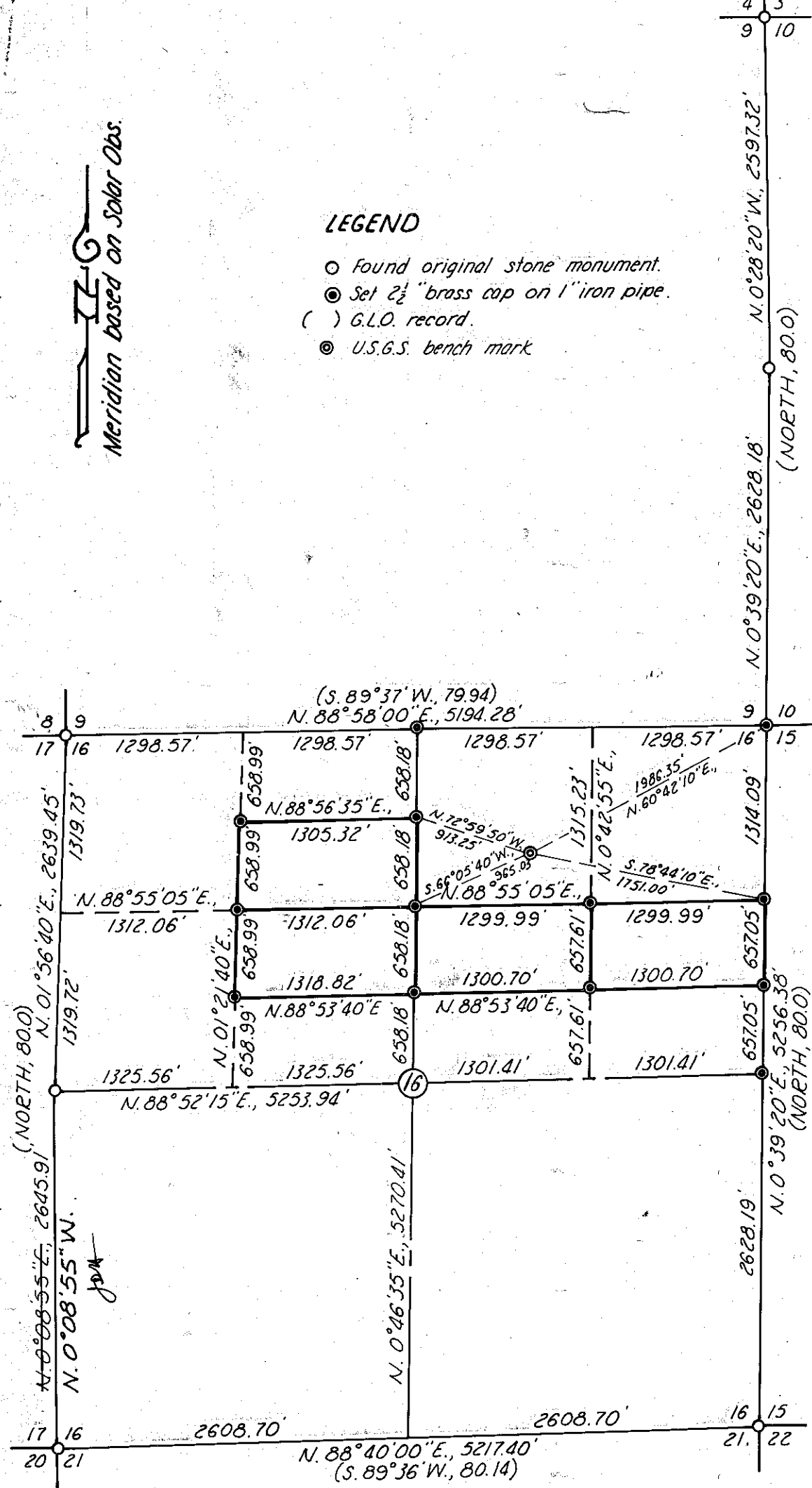


Meridian based on Solar Obs.

LEGEND

- Found original stone monument.
- Set 2 1/2" brass cap on 1" iron pipe.
- () G.L.O. record.
- ⊙ U.S.G.S. bench mark.



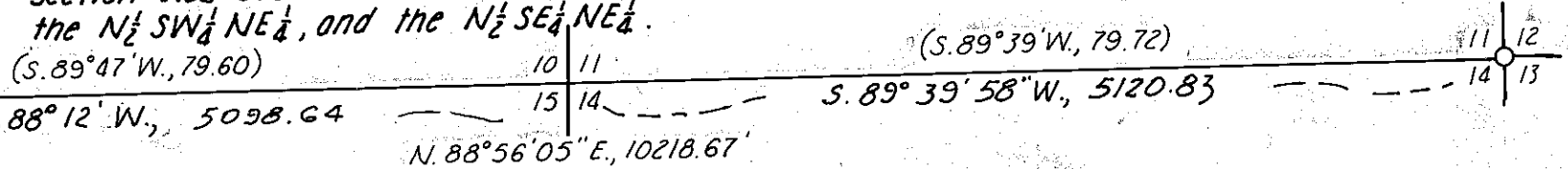
NARRATIVE TO ACCOMPANY SURVEY

The South quarter corner is presumed to be lost and is therefore re-located by single proportionate measure between the found Southeast and Southwest section corners of Section 16. This corner was not monumented this survey.

~~The Northeast section corner is presumed to be lost and is therefore re-located by double proportionate measure between the found Northwest and Southeast section corners of section 16, the found East quarter corner of section 9, and the found Northeast section corner of section 14. SEE SURVEY NO. 12-43-9 JSM~~

The North and East quarter corners are presumed to be lost and are re-located by single proportionate measure between the found Northwest section corner, the re-located Northeast section corner, and the found Southeast section corner, all in section 16.

In full accordance with the BLM Manual of Survey Instructions, the section was subdivided to delineate the S 1/2 NE 1/4 NW 1/4, the N 1/2 SE 1/4 NW 1/4, the N 1/2 SW 1/4 NE 1/4, and the N 1/2 SE 1/4 NE 1/4.



MAP OF SURVEY

THE SUBDIVISION OF SECTION 16, T. 12 S., R. 43 E., W. M.
 AND THE S 1/2 NE 1/4 NW 1/4, N 1/2 SE 1/4 NW 1/4, N 1/2 SW 1/4 NE 1/4 & N 1/2 SE 1/4 NE 1/4
 Surveyed Oct. 10, 1978 to April 26, 1979 Scale 1" = 1000'
 for Oregon Portland Cement Co.

FILED April 30, 1979
 BAKER COUNTY SURVEYOR
 SURVEY NO. 12-43-3

REGISTERED
 PROFESSIONAL
 LAND SURVEYOR
 William L. Hanley
 OREGON
 JULY 14, 1978
 WILLIAM L. HANLEY
 1639

Rev. & Add. 11-26-85 JSM