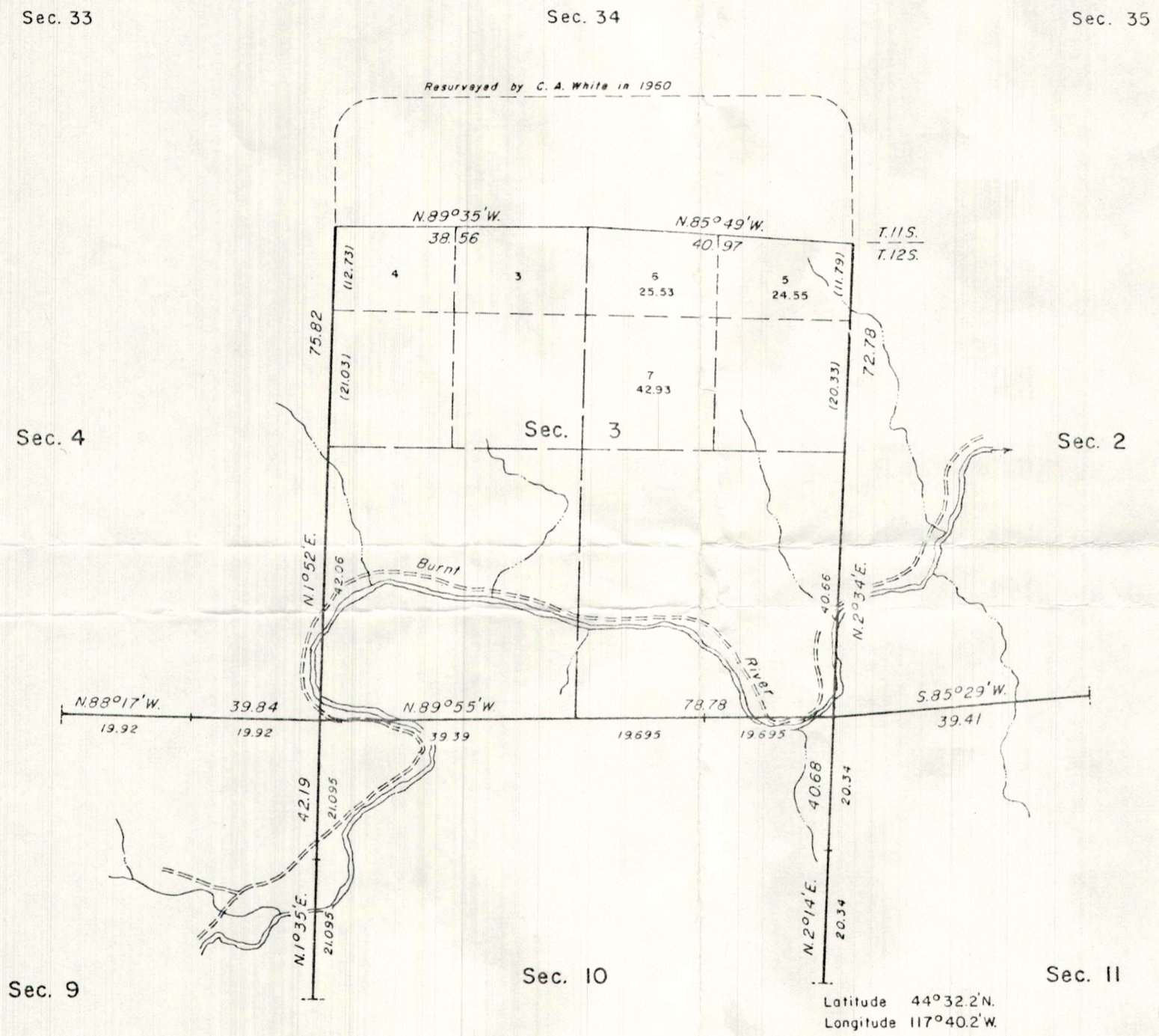
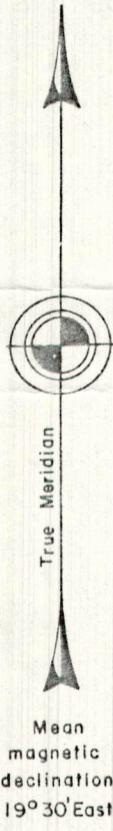


TOWNSHIP 12 SOUTH, RANGE 41 EAST, OF THE WILLAMETTE MERIDIAN, OREGON.  
 DEPENDENT RESURVEY



A history of surveys is contained in the field notes.

This plat represents a dependent resurvey of a portion of the subdivisional lines, designed to restore the corners in their true original locations according to the best available evidence, T. 12 S., R. 41 E., Willamette Meridian, Oregon.

The lottings and areas are as shown on the plats approved March 28, 1882 and February 21, 1884.

The survey was executed by Glenn F. Goodson and John P. Lee, Cadastral Surveyors, beginning May 29, 1979, and completed June 6, 1979, pursuant to Special Instructions dated May 21, 1979, for Group No. 984, Oregon.

Timber in this area consists of juniper, fir, and pine.

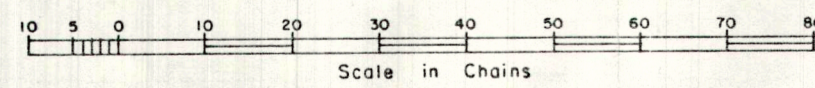
UNITED STATES DEPARTMENT OF THE INTERIOR  
 BUREAU OF LAND MANAGEMENT  
 Portland, Oregon August 5, 1983

This plat is strictly conformable to the approved field notes, and the survey, having been correctly executed in accordance with the requirements of law and the regulations of this Bureau, is hereby accepted.

For the Director

*William W. Glenn*

Chief Cadastral Surveyor of Oregon



FILED Sept 22 1983  
 BAKER COUNTY SURVEYOR  
 SURVEY NO. 12-41-3